

TO: Board of Directors

FROM: Debra A. Johnson, General Manager and CEO

DATE: December 15, 2022

SUBJECT: Board Briefing Documents – December 2022



The Board Briefing documents for the month of December 2022 are included herein.

Once reviewed, should Board members have questions regarding these materials, a detailed inquiry should be sent to board.office@rtd-denver.com.

Listed below are the month's Board Briefing documents by topic and date:

Documents

- Unaudited Monthly Financial Statement – October 2022
- Status of Federal COVID-19 Grant Relief Funding through October 2022
- Subregional Service Councils Meeting #1 Summary – November 2022
- Community Engagement Report – November 2022
- Bus/Rail Operations Service Availability – October 2022
- Agreements – November 2022
- Risk Management Claim Settlements – October 2022
- Summary of Monthly Purchasing Activity and New Contracts – November 2022

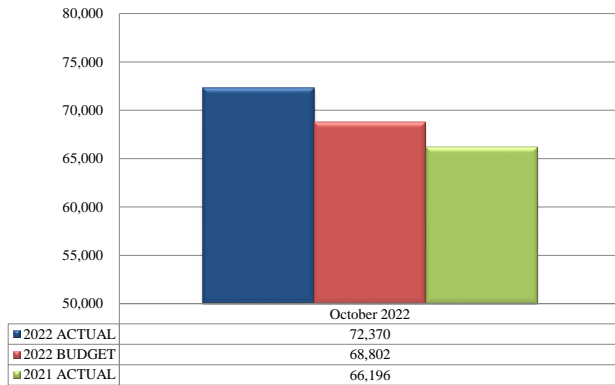
Unaudited Monthly Financial Statements - October 2022

OCT 2022 ACTUAL vs. AMENDED BUDGET		YTD 2022 ACTUAL vs. AMENDED BUDGET		OCTOBER 2022 vs. 2021		YEAR TO DATE 2022 vs. 2021	
S&U TAX 5.2%	↑	S&U TAX 7.4%	↑	S&U TAX 9.3%	↑	S&U TAX 14.1%	↑
RIDERSHIP -17.3%	↓	RIDERSHIP -7.6%	↓	RIDERSHIP 13.0%	↑	RIDERSHIP 29.3%	↑
FARE REVENUE -29.6%	↓	FARE REVENUE -25.3%	↓	FARE REVENUE -14.1%	↓	FARE REVENUE -6.2%	↓

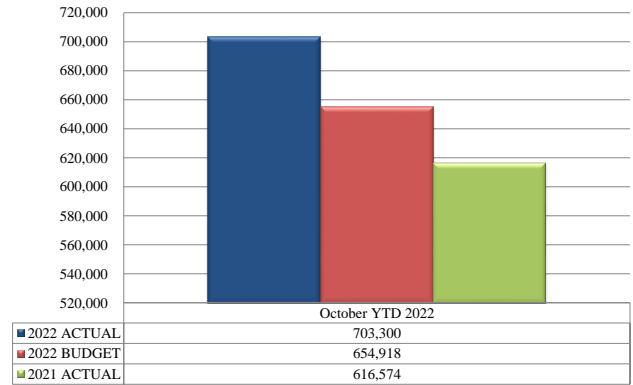
SALES AND USE TAX OCTOBER 2022

(In Thousands)	2022 ACTUAL	2022 BUDGET	VARIANCE	VARIANCE %	2021 ACTUAL	VARIANCE TO 2021	VARIANCE % TO 2020
MONTH	72,370	68,802	3,568	5.2%	66,196	6,174	9.3%
YTD	703,300	654,918	48,382	7.4%	616,574	86,726	14.1%

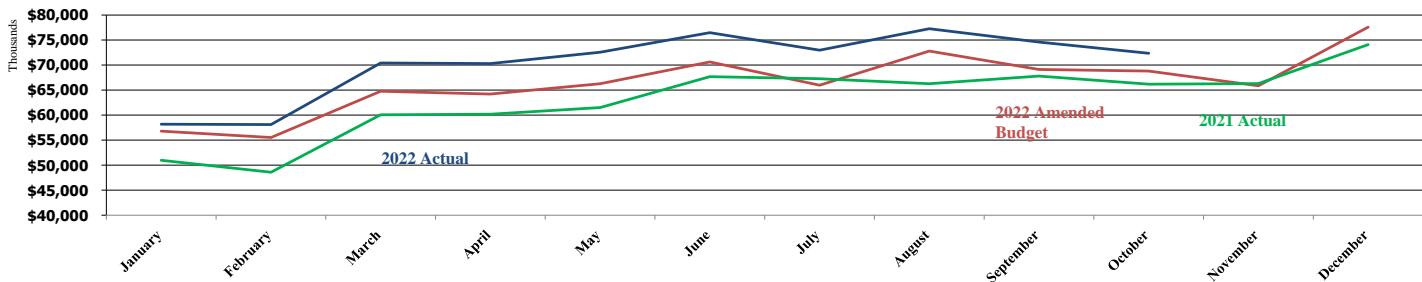
S&U TAX - OCT 2022
ACTUAL VS. BUDGET



S&U TAX - YTD
ACTUAL VS. BUDGET



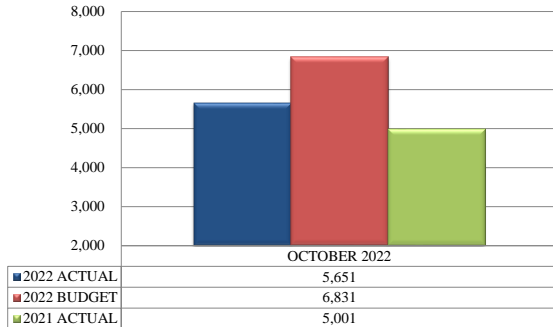
SALES AND USE TAX TRENDS



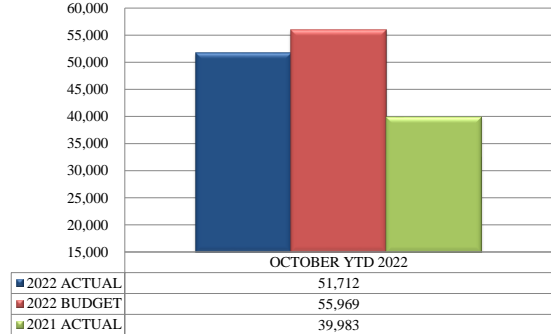
RIDERSHIP (BOARDINGS) OCTOBER 2022

(In Thousands)	2022 ACTUAL	2022 AMD BUDGET	VARIANCE	VARIANCE %	2021 ACTUAL	VARIANCE	VARIANCE % to 2021
MONTH	5,651	6,831	(1,180)	-17.3%	5,001	650	13.0%
YEAR TO DATE	51,712	55,969	(4,257)	-7.6%	39,983	11,729	29.3%

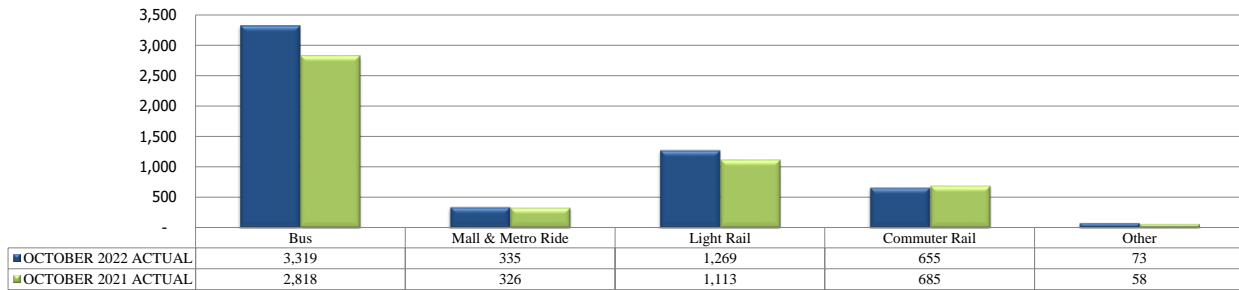
**RIDERSHIP - OCTOBER 2022
ACTUAL VS. AMENDED BUDGET**



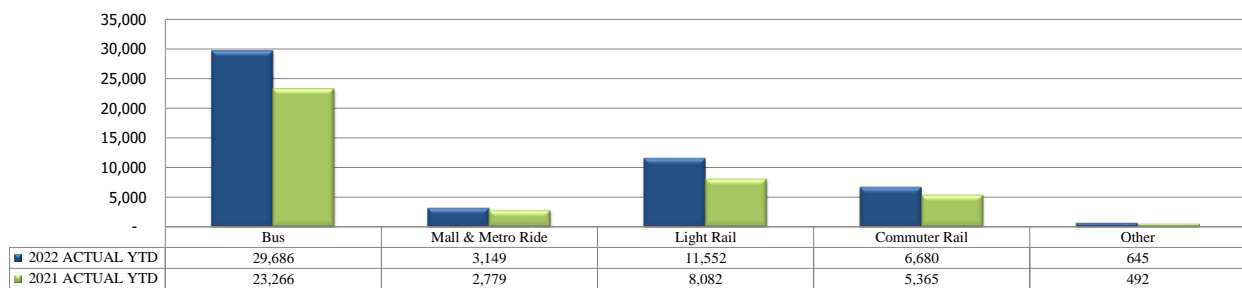
**RIDERSHIP - YTD
ACTUAL VS. AMENDED BUDGET**



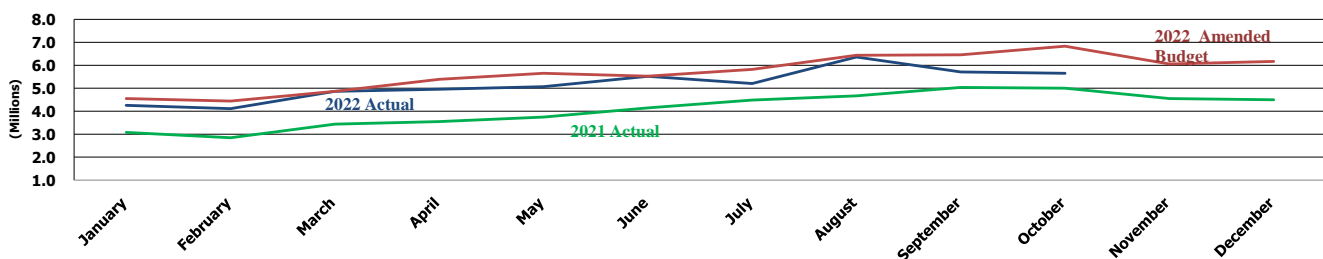
RIDERSHIP BY TYPE - OCTOBER 2022



RIDERSHIP BY TYPE - YTD



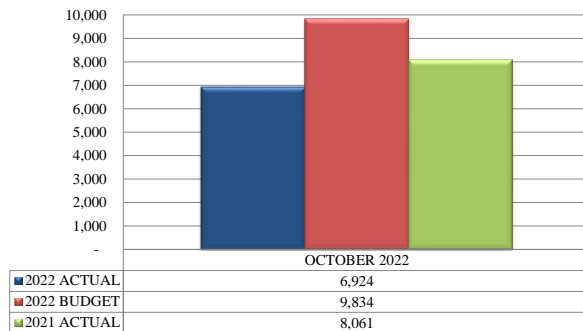
RIDERSHIP TRENDS



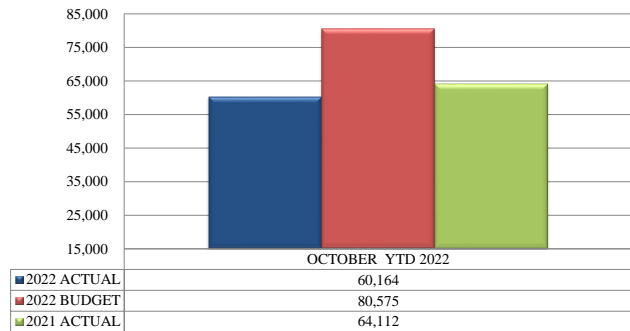
FARE REVENUE OCTOBER 2022

(In Thousands)	2022 ACTUAL	2022 AMD BUDGET	VARIANCE	VARIANCE %	2021 ACTUAL	VARIANCE	VARIANCE % to 2021
MONTH	6,924	9,834	(2,910)	-29.6%	8,061	(1,136)	-14.1%
YEAR TO DATE	60,164	80,575	(20,410)	-25.3%	64,112	(3,948)	-6.2%

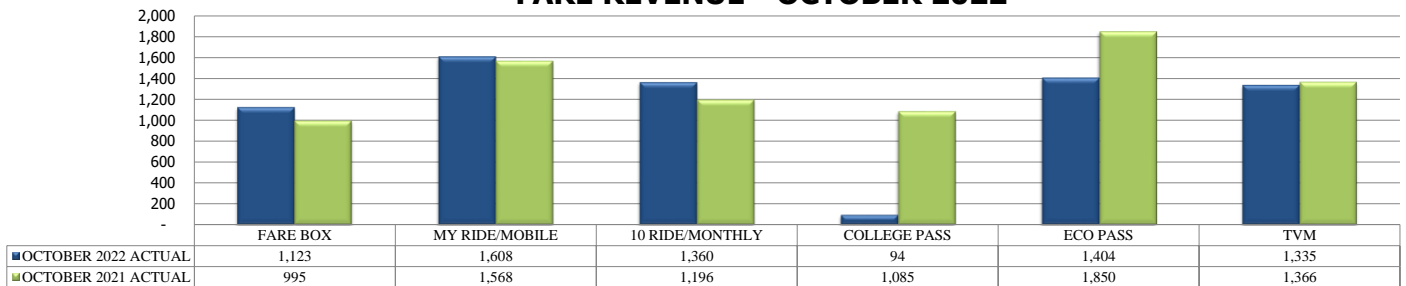
**FARE REVENUE - OCTOBER 2022
ACTUAL VS. AMENDED BUDGET**



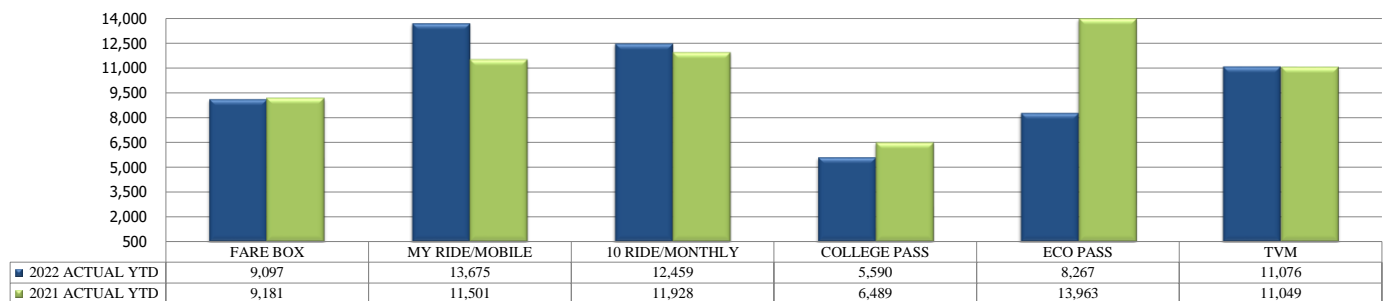
**FARE REVENUE - YTD
ACTUAL VS. AMENDED BUDGET**



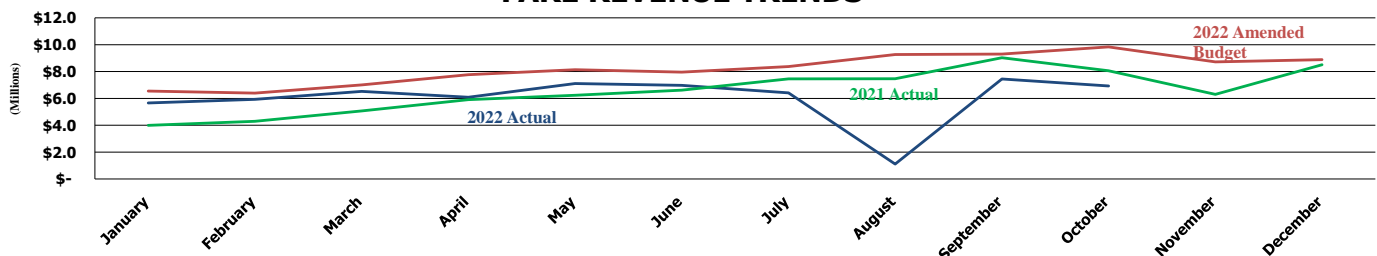
FARE REVENUE - OCTOBER 2022



FARE REVENUE - YTD



FARE REVENUE TRENDS



The N Line opened on September 21, 2020. Fares were suspended for the first week and then were only local fares through March 27, 2021. August 2022 was Zero Fare for Better Air during which no fares were collected. The Colorado Energy Office will reimburse RTD for \$7.4m which is 80% of budgeted fare revenue.



REGIONAL TRANSPORTATION DISTRICT
STATEMENT OF NET POSITION - COMBINED
OCTOBER 31, 2022
 (UNAUDITED)
 (In Thousands)

	2022 Base System	2022 FasTracks Project	2022 FasTracks Ops	2022 Combined	Dec 31, 2021 Combined	Change
ASSETS						
CURRENT ASSETS:						
Cash & Cash Equivalents	\$ 554,515	\$ 412,823	\$ 55,092	\$ 1,022,430	\$ 878,645	\$ 143,785
Receivables:						
Sales Taxes	88,186	58,881	-	147,067	140,400	6,667
Grants	14,750	-	-	14,750	49,251	(34,501)
Other (less allowance for doubtful accts)	5,848	149	-	5,997	13,157	(7,160)
Total Net Receivables	108,784	59,030	-	167,814	202,808	(34,994)
Inventory	37,453	-	-	37,453	34,692	2,761
Restricted Debt Service/Project Funds	35,832	64,870	-	100,702	62,202	38,500
Other Assets	7,228	1,903	818	9,949	11,607	(1,658)
TOTAL CURRENT ASSETS	743,812	538,626	55,910	1,338,348	1,189,954	148,394
NONCURRENT ASSETS:						
Capital Assets:						
Land	171,181	685,997	-	857,178	857,406	(228)
Land Improvements	1,313,255	4,565,710	-	5,878,965	5,846,148	32,817
Buildings	297,952	393,553	-	691,505	689,980	1,525
Revenue Earning Equipment	772,163	777,612	-	1,549,775	1,356,062	193,713
Shop, Maintenance & Other Equipment	211,767	8,047	-	219,814	409,168	(189,354)
Construction in Progress	48,715	39,284	-	87,999	115,696	(27,697)
Total Capital Assets	2,815,033	6,470,203	-	9,285,236	9,274,460	10,776
Accumulated Depreciation	(1,736,428)	(1,540,887)	-	(3,277,315)	(2,992,855)	(284,460)
Net Capital Assets	1,078,605	4,929,316	-	6,007,921	6,281,605	(273,684)
TABOR Reserves	8,433	9,501	-	17,934	19,065	(1,131)
Restricted Debt Service/Debt Service Reserves	26,185	28,383	-	54,568	94,647	(40,079)
Deposits	1,500	-	-	1,500	1,500	-
TOTAL NONCURRENT ASSETS	1,114,723	4,967,200	-	6,081,923	6,396,817	(314,894)
TOTAL ASSETS	\$ 1,858,535	\$ 5,505,826	\$ 55,910	\$ 7,420,271	\$ 7,586,771	\$ (166,500)
DEFERRED OUTFLOW OF RESOURCES	\$ 29,416	\$ 22,337	\$ -	\$ 51,753	\$ 54,203	\$ (2,450)





REGIONAL TRANSPORTATION DISTRICT
STATEMENT OF NET POSITION - COMBINED
OCTOBER 31, 2022
 (UNAUDITED)
 (In Thousands)

	2022 Base System	2022 FasTracks Project	2022 FasTracks Ops	2022 Combined	Dec 31, 2021 Combined	Change
LIABILITIES						
CURRENT LIABILITIES:						
Accounts & Contracts Payable	\$ 37,662	\$ 6,834	\$ 4,295	\$ 48,791	\$ 54,402	\$ (5,611)
Current Portion of Long Term Debt	45,911	21,147	-	67,058	71,548	(4,490)
Accrued Compensation	26,189	-	-	26,189	25,264	925
Accrued Interest Payable	4,831	47,120	-	51,951	17,060	34,891
Other	16,662	2,001	-	18,663	15,484	3,179
TOTAL CURRENT LIABILITIES	131,255	77,102	4,295	212,652	183,758	28,894
NONCURRENT LIABILITIES:						
Long Term Debt	244,808	2,695,796	-	2,940,604	3,139,742	(199,138)
Other Long-Term Liabilities	-	564,863	-	564,863	558,253	6,610
Net Pension Liability	100,200	-	-	100,200	260,200	(160,000)
TOTAL NONCURRENT LIABILITIES	345,008	3,260,659	-	3,605,667	3,958,195	(352,528)
TOTAL LIABILITIES	\$ 476,263	\$ 3,337,761	\$ 4,295	\$ 3,818,319	\$ 4,141,953	\$ (323,634)
DEFERRED INFLOW OF RESOURCES	\$ 30,876	\$ 5,044	\$ -	\$ 35,920	\$ 36,223	\$ (303)
NET POSITION						
Net Investment in Capital Assets	\$ 816,547	\$ 1,662,293	\$ (1)	\$ 2,478,839	\$ 2,552,419	\$ (73,580)
Restricted - Debt Service, Projects and Deferrals	36,647	93,249	-	129,896	128,322	1,574
Restricted - TABOR Reserves	24,617	5,220	-	29,837	25,623	4,214
Restricted - FasTracks	-	276,303	-	276,303	216,395	59,908
FasTracks Internal Savings Account (FISA)	-	148,293	-	148,293	129,304	18,989
Board Appropriated Fund	39,115	-	12,501	51,616	39,115	12,501
Capital Replacement Fund	185,000	-	12,501	197,501	12,915	184,586
Unrestricted Operating Reserve/Mgt Reserve	-	-	26,614	26,614	15,400	11,214
Unrestricted Fund	338,121	-	-	338,121	571,562	(233,441)
Net Pension Liability - Represented	(59,235)	-	-	(59,235)	(228,257)	169,022
TOTAL NET POSITION	\$ 1,380,812	\$ 2,185,358	\$ 51,615	\$ 3,617,785	\$ 3,462,798	\$ 154,987
TOTAL LIABILITIES & NET POSITION	\$ 1,887,951	\$ 5,528,166	\$ 55,910	\$ 7,472,024	\$ 7,640,974	\$ (168,950)





REGIONAL TRANSPORTATION DISTRICT
STATEMENT OF REVENUE, EXPENSES AND CHANGE IN NET POSITION - COMBINED
October 31, 2022
(UNAUDITED)
(In Thousands)

	YTD Base System Actual	YTD Base System Amd Budget	YTD FasTracks Project Actual	YTD FasTracks Project Amd Budget	YTD FasTracks Operations Actual	YTD FasTracks Operations Amd Budget	YTD System Wide Actual	YTD System Wide Amd Budget	\$ Favorable (Unfavorable)	% Favorable (Unfavorable)	
OPERATING REVENUE:											
Passenger Fares	\$ 35,186	\$ 55,597	\$ -	\$ -	\$ 24,978	\$ 24,978	60,164	80,575	(20,411)	-25.3%	
Advertising, Rent and Other	5,789	6,961	353	-	298	-	6,440	6,961	(521)	-7.5%	
Total Operating Revenue	40,975	62,558	353	-	25,276	24,978	66,604	87,536	(20,932)	-23.9%	
OPERATING EXPENSES											
Bus Operations	262,065	288,908	-	-	-	-	262,065	288,908	26,843	9.3%	(1)
Rail Operations	55,125	68,255	-	-	68,944	74,240	124,069	142,495	18,426	12.9%	(2)
Planning	6,047	7,945	70	298	-	-	6,117	8,243	2,126	25.8%	(3)
Capital Programs	39,646	56,060	1,642	8,114	1,202	2,873	42,490	67,047	24,557	36.6%	(4)
Administration	33,100	32,483	-	-	-	-	33,100	32,483	(617)	-1.9%	(5)
Security	15,002	18,306	-	-	-	-	15,002	18,306	3,304	18.0%	(6)
General Counsel	12,263	11,476	125	211	2,703	3,500	15,091	15,187	96	0.6%	(7)
Finance	12,262	11,077	-	-	-	-	12,262	11,077	(1,185)	-10.7%	(8)
Communications	11,199	12,735	10	-	-	-	11,209	12,735	1,526	12.0%	(9)
Executive Office	7,475	5,920	-	-	-	-	7,475	5,920	(1,555)	-26.3%	(10)
Board Office	841	739	-	-	-	-	841	739	(102)	-13.8%	(11)
FasTracks Service Increase	(16,520)	(16,520)	16,520	16,520	-	-	-	-	-	0.0%	
Depreciation and Other Non-Departmental	45,649	81,524	199,790	172,698	55,891	59,355	301,330	313,577	12,247	3.9%	
Total Operating Expenses	484,154	578,908	218,157	197,841	128,740	139,968	831,051	916,717	85,666	9.3%	
OPERATING INCOME/(LOSS)	(443,179)	(516,350)	(217,804)	(197,841)	(103,464)	(114,990)	(764,447)	(829,181)	64,734	7.8%	
NONOPERATING REVENUE (EXPENSES)											
Sales & Use Tax	421,980	392,035	217,888	148,593	63,433	113,876	703,301	654,504	48,797	7.5%	
Operating Grants	255,392	84,510	349	-	51,301	-	307,042	84,510	222,532	263.3%	
Investment Income	310	-	(8,373)	-	-	-	(8,063)	-	(8,063)	0.0%	
Other Income	2,746	(6)	22,246	-	-	-	24,992	(6)	24,998	-416633.3%	
Gain/(Loss) Capital Assets	(160)	-	-	-	-	-	(160)	-	(160)	0.0%	
Interest Expense	(7,449)	(9,298)	(108,519)	(118,906)	-	-	(115,968)	(128,204)	12,236	9.5%	
Net Nonoperating Revenue (Expense)	672,819	467,241	123,591	29,687	114,734	113,876	911,144	610,804	300,340	49.2%	
INCOME BEFORE CAPITAL GRANTS	229,640	(49,109)	(94,213)	(168,154)	11,270	(1,114)	146,697	(218,377)	365,074	-167.2%	
Capital Grants and Local Contributions	4,285	-	3,875	-	-	-	8,160	-	8,160	0.0%	
INCREASE/(DECREASE) IN NET POSITION	\$ 233,925	\$ (49,109)	\$ (90,338)	\$ (168,154)	\$ 11,270	\$ (1,114)	\$ 154,857	\$ (218,377)	\$ 373,234	-170.9%	
Fare Recovery Ratio							7.2%	8.8%	-1.6%		

- (1) Variance is due to shortfall in staffing, lower parts and fuel and lower purchased transportation costs
- (2) Variance is due to lower parts and traction power costs as well as lower software costs and preventive maintenance campaign costs
- (3) Variance is due to several projects started which will carry over into 2023
- (4) Variance is due to several projects not yet started, ground maintenance and other repair contract savings, as well as lower-than-expected costs in Facilities Maintenance contracted services and utilities
- (5) Variance is primarily due to lower IT costs occurring from reduced expenditures for computer equipment, software and contracted technical support services
- (6) Variance is primarily due to lower contracted security costs
- (7) Prior months negative variances were primarily due to timing of insurance premium payments. Variance is now immaterial due to effective claims management
- (8) Variance is due to higher benefit allocations as well as timing of fare media purchases and Account-based Ticketing (ABT) costs
- (9) Variance is due to lower costs from projects not undertaken for various marketing and communication initiatives as well as printing of timetables and other materials
- (10) Variance is due to temporary coding of P-card expenses until allocation is made to the appropriate departments
- (11) Variance is due to timing of travel, special project and public event costs and is expected to meet budget by year-end
- Regional Transportation District
1660 Blake Street, Denver CO 80202

REGIONAL TRANSPORTATION DISTRICT 1% SALES AND USE TAX REVENUE - **SYSTEM WIDE**

October 31, 2022

(In Thousands)

2022 ACTUAL VS. AMENDED BUDGET

	January 2022	February 2022	March 2022	April 2022	May 2022	June 2022	July 2022	August 2022	September 2022	October 2022	November 2022	December 2022	Total Year To Date
Actual	\$ 58,191	\$ 58,115	\$ 70,425	\$ 70,307	\$ 72,577	\$ 76,472	\$ 72,969	\$ 77,267	\$ 74,606	\$ 72,370	\$ -	\$ -	\$ 703,300
Amended Budget	56,799	55,528	64,783	64,207	66,272	70,614	65,972	72,813	69,128	68,802	65,864	77,586	798,369
Favorable/(Unfavorable)	\$ 1,392	\$ 2,587	\$ 5,643	\$ 6,100	\$ 6,306	\$ 5,857	\$ 6,997	\$ 4,454	\$ 5,479	\$ 3,568			\$ 48,382
% Favorable/(Unfavorable) - Month	2.5%	4.7%	8.7%	9.5%	9.5%	8.3%	10.6%	6.1%	7.9%	5.2%			
% Favorable/(Unfavorable) - YTD	2.5%	3.5%	5.4%	6.5%	7.2%	7.4%	7.9%	7.6%	7.6%	7.4%			

2022 VS. 2021 ACTUALS

Net Sales & Use Tax Received	January	February	March	April	May	June	July	August	September	October	November	December	Total
2022	\$ 58,191	\$ 58,115	\$ 70,425	\$ 70,307	\$ 72,577	\$ 76,472	\$ 72,969	\$ 77,267	\$ 74,606	\$ 72,370	\$ -	\$ -	\$ 703,300
2021	50,966	48,590	60,070	60,174	61,503	67,700	67,289	66,286	67,799	66,196	66,302	74,098	756,974
Change from to 2020	\$ 7,225	\$ 9,525	\$10,356	\$10,133	\$11,074	\$ 8,771	\$ 5,680	\$10,981	\$ 6,807	\$ 6,174			\$ 86,726
% Increase/(Decrease) by Month vs. 2021	14.2%	19.6%	17.2%	16.8%	18.0%	13.0%	8.4%	16.6%	10.0%	9.3%			
% Increase YTD vs. 2021	14.2%	16.8%	17.0%	16.9%	17.2%	16.4%	15.1%	15.3%	14.6%	14.1%			



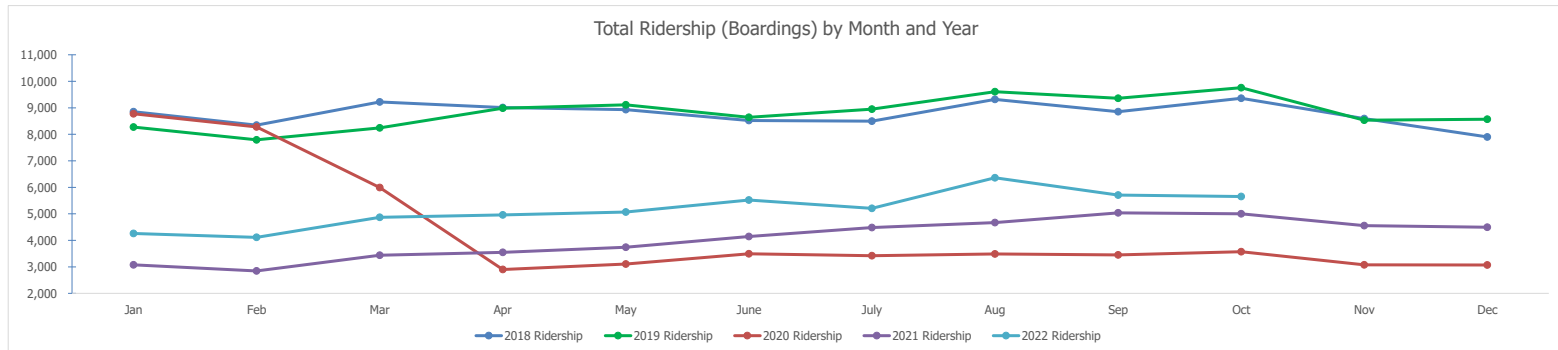
REGIONAL TRANSPORTATION DISTRICT RIDERSHIP (BOARDINGS) BY MONTH, YEAR AND MODE

2022 RIDERSHIP/BOARDINGS (in Thousands)																
	Jan	Feb	Mar	Apr	May	June	July	Aug	Sep	Oct	Nov	Dec	YTD 2022	YTD 2021	Change	% Change
Fixed Route	2,461	2,312	2,703	2,725	2,765	2,901	2,770	3,579	3,171	3,193			28,581	22,444	6,137	27.3%
Flatiron Flyer	63	73	87	91	83	95	85	119	108	104			908	665	243	36.6%
FlexRide & Special Services	15	18	21	20	19	20	18	23	21	22			197	157	39	25.1%
Total Bus Service	2,540	2,403	2,810	2,836	2,867	3,016	2,873	3,721	3,301	3,319	-	-	29,686	23,266	6,420	27.6%
C Line	-	-	-	-	-	-	-	-	-	-			-	29	(29)	-100.0%
D Line	172	181	207	223	212	270	230	268	256	243			2,263	1,526	736	48.3%
E Line	239	246	301	321	342	408	371	421	365	369			3,382	2,323	1,059	45.6%
F Line	-	-	-	-	-	-	-	-	-	-			-	-	-	0.0%
H Line	163	165	190	197	200	235	208	240	239	241			2,078	1,408	670	47.6%
L Line	28	25	29	29	29	34	30	36	31	31			302	280	22	7.7%
R Line	74	71	82	86	93	107	104	122	105	113			958	749	209	27.9%
W Line	197	189	227	251	256	312	280	306	281	270			2,569	1,766	802	45.4%
Total Light Rail	872	876	1,037	1,108	1,133	1,365	1,223	1,394	1,276	1,269	-	-	11,552	8,082	3,470	42.9%
A Line	387	397	505	469	498	519	521	594	499	457			4,846	4,003	843	21.1%
B Line	10	9	11	13	14	16	15	17	14	13			131	98	34	34.3%
G Line	60	59	76	84	85	100	98	115	98	91			867	645	222	34.4%
N Line	62	56	74	81	82	93	91	106	99	94			837	620	217	35.0%
Total Commuter Rail	518	521	666	647	678	729	724	832	709	655	-	-	6,680	5,365	1,315	24.5%
Access-a-Ride	37	38	46	44	44	44	42	52	46	48			442	357	86	24.0%
Access-a-Cab	4	4	5	4	4	3	3	4	3	3			38	67	(29)	-43.4%
Access-on-Demand	1	2	4	5	6	7	6	12	11	12			67	2	64	2586.4%
Vanpool	9	8	9	10	9	11	11	10	10	11			98	65	33	50.2%
Total Revenue Service	3,981	3,852	4,576	4,655	4,742	5,175	4,883	6,026	5,357	5,316	-	-	48,563	37,205	11,358	30.5%
Mall Shuttle	276	260	292	301	326	347	326	334	351	335			3,149	2,779	370	13.3%
MetroRide	-	-	-	-	-	-	-	-	-	-			-	-	-	0.0%
Total Non-Revenue Services	276	260	292	301	326	347	326	334	351	335	-	-	3,149	2,779	370	13.3%
Total System	4,258	4,112	4,868	4,956	5,068	5,522	5,209	6,360	5,708	5,651	-	-	51,712	39,983	11,728	29.3%

2022 % Change from 2021 by Month
2022 % Change from 2020 by Month
2022 % Change from 2019 by Month

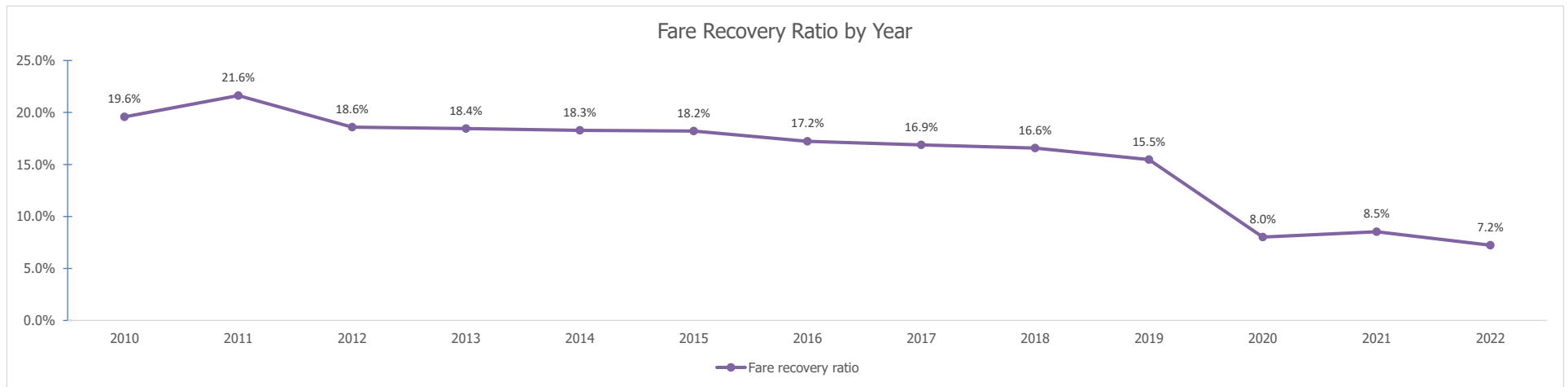
38.3%	44.5%	41.6%	39.8%	35.4%	33.2%	16.2%	36.2%	13.3%	13.0%	29.3%
-51.5%	-50.3%	-18.7%	70.9%	63.1%	58.1%	52.3%	82.4%	65.6%	58.2%	11.3%
-48.5%	-47.2%	-40.9%	-44.8%	-44.4%	-36.1%	-41.8%	-33.8%	-39.0%	-42.1%	-41.7%

	Jan	Feb	Mar	Apr	May	June	July	Aug	Sep	Oct	Nov	Dec	Total
2018 Ridership	8,849	8,348	9,220	9,009	8,931	8,519	8,496	9,314	8,850	9,360	8,591	7,901	105,388
2019 Ridership	8,270	7,792	8,244	8,986	9,111	8,640	8,952	9,609	9,358	9,759	8,534	8,568	105,824
2020 Ridership	8,775	8,281	5,991	2,899	3,107	3,492	3,419	3,488	3,448	3,572	3,075	3,070	52,617
2021 Ridership	3,078	2,845	3,438	3,546	3,742	4,146	4,482	4,669	5,036	5,001	4,553	4,497	49,033
2022 Ridership	4,258	4,112	4,868	4,956	5,068	5,522	5,209	6,360	5,708	5,651			51,712



**REGIONAL TRANSPORTATION DISTRICT
FARE RECOVERY RATIO
October 31, 2022**

	<u>2010</u>	<u>2011</u>	<u>2012</u>	<u>2013</u>	<u>2014</u>	<u>2015</u>	<u>2016</u>	<u>2017</u>	<u>2018</u>	<u>2019</u>	<u>2020</u>	<u>2021</u>	<u>2022</u>
Fare revenue (in thousands)	97,942	108,497	112,929	117,841	120,497	120,530	134,622	140,217	143,231	154,390	76,265	78,923	60,164
Operating Expenses (in thousands)	500,287	501,611	607,277	638,737	659,102	661,355	781,611	830,534	864,158	998,031	951,508	925,110	831,051
Fare recovery ratio	19.6%	21.6%	18.6%	18.4%	18.3%	18.2%	17.2%	16.9%	16.6%	15.5%	8.0%	8.5%	7.2%



Notes:

2020: COVID-19 significantly decreased ridership beginning in March 2020. Fares were suspended April-June 2020.



**REGIONAL TRANSPORTATION DISTRICT
FASTRACKS INTERNAL SAVINGS ACCOUNT (FISA)**
(In Thousands)

2022 AMENDED BUDGET

	Risk Level	Actual				2022 Budget	Estimated 2023-2027 MTFP	Estimated 2028-2030	Estimated 2031-2040	Total
		2013-2019	2020	2021	2013-2021					
IDENTIFIED SOURCES:										
Limit Fastracks funding increases for bus and paratransit expansion to CPI	Medium	\$ 49,484	\$ 15,441	\$ 17,658	\$ 82,583	\$ 18,989	\$ 108,763	\$ 72,076	\$ 273,651	\$ 556,062
Reduce FasTracks Minimum Unrestricted Fund Balance from \$150 million	Medium	-	-	-	-	-	-	-	-	-
Reduce FasTracks Operating and Maintenance Fund Balance from 3 to 2 months	Medium	-	-	-	-	-	-	-	-	-
Defer the Union Pacific Railroad (UPRR) relocation for the SW Corridor Extension	Low	9,000	-	-	9,000	-	-	-	-	9,000
Achieve project underruns on FasTracks projects currently under contract ¹	Low	40,804	15,500	-	56,304	-	-	-	-	56,304
Sales and lease opportunities for all RTD properties ²	Low	14,078	601	-	14,679	-	-	-	-	14,679
Request local financial participation in projects above the current 2.5%	Low	22,179	-	-	22,179	-	-	-	-	22,179
Restore FISA drawdowns for operations between 2031-2040 ³	Low	-	-	-	-	-	-	16,601	-	16,601
FasTracks sales and use tax collections above adopted budget ⁴	Low	3,207	-	-	3,207	-	-	-	-	3,207
Sales tax audit/parity	Low	-	-	-	-	-	-	-	-	-
Total Sources		138,752	31,542	17,658	187,952	18,989	108,763	88,677	273,651	678,032
IDENTIFIED USES:										
US36 Project draws ¹		(2,149)	(103)	(3,877)	(6,129)	-	-	(33,304)	-	(39,433)
North Metro Project draws		(22,338)	-	-	(22,338)	-	-	-	-	(22,338)
Southeast Rail Extension (SERE) Project draws		(22,179)	-	-	(22,179)	-	-	-	-	(22,179)
Debt service and operations funding ^{1,3}		(2)	-	-	(2)	-	(60,746)	-	-	(60,748)
2021/2022 Northwest Rail Study		-	-	(8,000)	(8,000)	-	-	-	-	(8,000)
Total Uses		(46,668)	(103)	(11,877)	(58,648)	-	(60,746)	(33,304)	-	(152,698)
Net Sources and Uses		\$ 92,084	\$ 31,439	\$ 5,781	\$ 129,304	\$ 18,989	\$ 48,017	\$ 55,373	\$ 273,651	\$ 525,334
FasTracks Internal Savings Account Balance		\$ 92,084	\$ 123,523	\$ 129,304	\$ 129,304	\$ 148,293	\$ 196,310	\$ 251,683	\$ 525,334	\$ 525,334

¹ Includes approved changes from 2020-2025 Midterm Financial Plan adopted in October 2019 and Long Range Plan adopted in October 2018, plus changes proposed in 2020 Amended Budget.

² Sale of Civic Center air rights for \$8,063 less \$2,500 cost of NAMS study - these are Base System funds; plus Fort Lupton property sale of \$4,096; plus Alameda property sale of \$5,140, plus Montbello property sale of \$601

³ The Long Range Financial Plan adopted in 2018 restores funds drawn from the FISA for operations and debt service to the FISA to the extent of available funding in Fastracks.

⁴ The transfer of Fastracks sales and use tax revenues in excess of the annual adopted budget to the FISA was approved by the Board in October 2016.

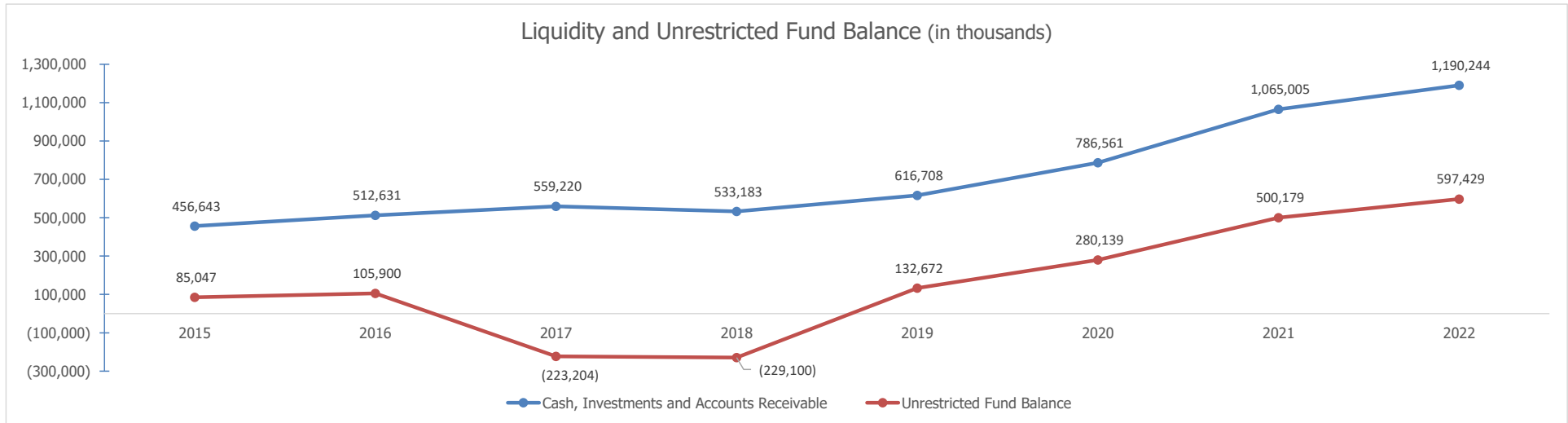


REGIONAL TRANSPORTATION DISTRICT LIQUIDITY AND FUND BALANCES

October 31, 2022

(In Thousands)

	<u>2015</u>	<u>2016</u>	<u>2017</u>	<u>2018</u>	<u>2019</u>	<u>2020</u>	<u>2021</u>	<u>2022</u>
Cash, Investments and Accounts Receivable	456,643	512,631	559,220	533,183	616,708	786,561	1,065,005	1,190,244
Unrestricted Fund Balance	85,047	105,900	(223,204)	(229,100)	132,672	280,139	500,179	597,429



Note: the Unrestricted Fund Balance excludes FasTracks "restricted" balances which are reserved only for FasTracks

Status of Federal COVID-19 Grant Relief Funding Through October 2022

RTD received federal grant apportionments as replacement funding due to significant revenue losses resulting from the COVID-19 Pandemic. The intent of each apportionment is to maintain public transit services which are considered an essential service. Each of the apportionments may be drawn through the Federal Transit Administration (FTA) on a reimbursement basis for eligible expenditures. Those grants are summarized below including the status regarding RTD's progress to date in drawing those funds.

- **Coronavirus Aid, Relief and Economic Security (CARES) Act:** Awarded in May 2020 and fully drawn in 2020 with expenditures for main maintaining service including compensation, fuel and purchased transportation
- **Coronavirus Response and Relief Supplemental Appropriations Act (CRRSAA):** Awarded in January 2021 with grant execution in May 2021. Approximately 90% is designated for transit service deployment over six runboards beginning June 2021. The remaining 10% is designated for elimination of certain 2021 cost-reduction actions and other initiatives
- **American Rescue Plan Act (ARPA):** Awarded in March 2021. Eligible expenditures are those that are incurred for maintaining service including compensation, fuel and purchased transportation
- **American Rescue Plan Act (ARPA) Supplemental Funding:** Awarded in March 2022 in response to RTD's application for additional funding for funding shortfall in the 2022-2027 Mid-term Financial Plan (MTFP). Eligible expenditures are those that are incurred for maintaining service including compensation, fuel and purchased transportation

	CARES	CRRSAA	ARPA	ARPA Supplemental	Total
RTD Apportionment	\$ 232,253,946	\$ 203,367,528	\$ 338,468,333	\$ 53,024,645	\$ 827,114,452
Less Small Urbanized Areas	-	-	(34,240,968)	-	(34,240,968)
Net Available to RTD	232,253,946	203,367,528	304,227,365	53,024,645	792,873,484
Grant Draws					
Employee Wages and Benefits	(146,908,920)	(133,038,576)	(204,992,733)	-	(484,940,229)
Contracted Transportation - Bus	(36,380,870)	(28,276,919)	(40,173,141)	-	(104,830,930)
Contracted Transportation - Rail	(48,964,156)	(41,959,148)	(56,377,772)	-	(147,301,076)
Fuel		(92,885)	(2,683,719)	-	(2,776,604)
Total Drawn	(232,253,946)	(203,367,528)	(304,227,365)	-	(739,848,839)
Remaining to be Drawn	\$ -	\$ -	\$ -	\$ 53,024,645	\$ 53,024,645
% of Total Drawn	100.0%	100.0%	100.0%	0.0%	93.3%

Note: Previous documents have included a reference to additional section 5307 funding that was apportioned to RTD through the Infrastructure and Jobs Act (IIJA)/Bipartisan Infrastructure Law (BIL). Those references have been removed due to that apportionment being related to preventive maintenance rather than COVID funding. The IIJA/BIL apportionments are approximately \$30 million annually beginning in 2022 and are reflected in the monthly financial statements.

Subregional Service Councils Meeting #1 Summary, November 2022

Summary

This was the introductory meeting of the Southwest Subregional Service Council. Subregional Service Councils (SSCs) were a recommendation of the State of Colorado's Accountability Committee. In response, RTD established a working group to provide input on SSC formation. The working group provided guidance on the purpose, role and operation of SSCs, membership of SSCs, including representation from local jurisdictions, transit advocates, RTD customers, and the boundaries for the SSCs. Agenda of discussion topics and comments provided by the Council are below.

Agenda and Comments

1. Safety Moment

2. Introductions

3. Background

The State of Colorado's Accountability Committee recommended that RTD form SSCs to advise the District and improve communication and coordination. RTD assembled a working group to discuss the formation of the SSCs, including their purpose, boundaries, and representation. Per the working group's recommendations, the SSCs will be composed of city and county staff, transportation management association staff, and representatives from non-governmental organizations representing transit customers; the SSCs will provide feedback and recommendations that are advisory in nature and sustain an open dialog with RTD.

Discussions and Clarifications:

- SSCs will also be a forum for jurisdictions to share information, seek input, and have a dialogue about their own studies and planning projects
- Future discussions will relate to service, rather than capital investments.
- Participants asked for more information regarding SSC boundaries, including why Boulder County had retained its own SSC. Boundaries are based on RTD travel sheds with modifications based on feedback from members of the SSC working group.
- Cross-council transportation connections are crucial and the committee will attempt to maintain a big picture view while focusing on the service within its boundaries.
- Some jurisdictions span council boundaries and representatives will choose which council(s) to attend. Denver has a representative on the three councils that overlap its boundaries.

4. Service Planning Basics

Service planning is a highly complex and detail-driven process that takes input from a variety of sources. Planning for service changes is approximately a six-month process with over 500 individual steps to complete.

Discussions and Clarifications:

- One piece of the process is the Operator Vote where RTD operators choose, in order of seniority, which runs they would like to work for the next several months. This is a requirement of the Collective Bargaining Agreement.

- The Service Planning process already includes engagement and public hearings as required by the FTA. Engagement through the SSCs would exist separately and in addition to the required engagement.
- Because of the lengthy time required to make adjustments to service, especially given current workforce constraints, SSC recommendations will not be able to be implemented in the run board immediately following SSC meetings. Rather, the SSCs will need to take a longer term view.
- Examples of feedback that would be helpful to share with RTD service planning staff include: land use, any new developments in the pipeline, any feedback local jurisdictions are hearing from RTD customers, any multimodal connections that might cause service disruptions during construction (such as pedestrian bridges over track).

5. NGO Representation

Each Subregional Service Council will include 1-2 NGO representatives from organizations that represent a wide range of transit users. RTD will review the list of suggested NGOs and reach out to determine their interest in participating in the SSCs.

- Suggested NGOs to invite to SSCs:
 - DRMAC
 - American Federation for the Blind
 - Colorado Center for the Blind
 - Evergreen Local Improvement District
 - Conifer Area Council
 - Groups representing seniors and people experiencing homelessness should also be included
 - Aurora Older Adults Commission
 - CCDC for paratransit and flexride (Denver)
 - Active Adult Board (Thornton)
 - Street Fraternity (Denver)
 - Focus Points (Denver)
 - Distribution Centers (Aurora)
 - The Senior Hub (Thornton)
 - Transportation Advisory Committee (Arvada)
 - River North Arts District
 - Denver Housing Authority and other housing authorities
 - Teams behind large master planned developments such as River Mile
 - Centers for Independent Living (Boulder County)
 - Local Area Collaboratives via HHS (Boulder County)
 - Association for Community Living (Boulder County)
 - Imagine (Boulder County)
 - University of Colorado (Denver and Boulder)
 - School Districts (Boulder)

6. Project Partnership Program

RTD's Partnership Program is a new, formal process through which stakeholders will be able to apply for funds for projects that supplement transit service. RTD is committed to bolstering and building partnerships and this program aims to increase transparency and clarity for stakeholders. The first SSC meeting was used to gather feedback from stakeholders on the proposed Partnership Program.



Discussions and Clarifications:

- In 2023, RTD has identified \$2 million for the Partnership Program. The 2023 budget was approved by the RTD Board of Directors on November 14, 2022. The \$2 million budget comes from local funds and may be increased in future years as the program demonstrates success.
- In 2023, this budget will fund new partnerships, not RTD's existing partnerships
 - Starting in 2024, RTD will work with existing partners to transition existing partnerships into the Partnership Program
- Technical assistance to aid jurisdictions in preparing applications will be necessary as some local jurisdictions may not have transit or transportation staff in-house
 - RTD staff will consider how best to administer this technical assistance, which may take the form of a pre-application meeting
- RTD staff will take into consideration whether first-last mile connections, enhancements to current shuttle services, or marketing of existing partnerships will be eligible projects under this program
- RTD staff will take into consideration whether BIDs will be eligible applicants under this program. Private entities would be expected to partner with a jurisdiction to apply.
- The period of performance for selected projects will likely run for multiple years. After the initial 2-4 year period of performance, projects may be discontinued, reapply for funding, or be incorporated into regular service depending on performance and RTD's financial resources at the time.
- All applications to the program will be evaluated on a transparent set of criteria
 - Some consideration will be how ridership is measured and how to best incorporate an equity perspective that reflects both where low-income households are located as well as where low-income workers might need connections to their places of employment
 - RTD staff will consider whether to prioritize projects in service areas where service was cut
- Performance metrics will be used to evaluate the projects. RTD staff will consider how best to evaluate the projects across many different contexts.
- Workforce constraints will likely impact this program and RTD expects that 3rd party operators will likely be needed to implement the service in 2023.
- SSCs will evaluate and recommend certain applications for their subregion. No more than 30% of Partnership Funding will be allocated to any one specific SSC.
- Infrastructure projects, such as transit signals and bus-only lanes, are not eligible as part of this program. RTD will consider how a future funding stream may be able to support capital projects that support transit.
- While federal funding (such as funding from the DRCOG TIP) can be used as local match for this program, introducing federal funds into the project will require additional time for processing and introduce additional project oversight.

7. Meeting #2 Look-Ahead

- Suggestions for future meetings
 - Distribute a read-ahead document before the meetings to facilitate discussion and allow participants to provide meaningful feedback
- Additional topics to discuss at future meetings
 - RTD's eBike policy
 - Workforce updates, both for RTD fixed route and contracted services
 - RTD system safety
 - Free transit service and an evaluation of the Zero Fare for Better Air program
 - RTD's fare study
 - Mobility concerns of older adults and people with disabilities
- Related concerns
 - R line service and discontinuation of bus bridge



Attendees

Southwest Subregional Service Council Meeting - 11/2/2022

Allison Cutting, Douglas County
Andrea Suhaka, TSAC
Bryan Weimer, Arapahoe County
Christina Lane, Jefferson County
David Gaspers, City and County of Denver
John Voboril, City of Englewood
Kathleen Osher, City of Littleton
Mike Hughes, West Corridor TMA
Rick Muriby, City of Golden
Roger Wadnal, City of Lakewood
Steve Durian, Jefferson County

Northeast Subregional Service Council - 11/3/2022

Bill Aiken, Commerce City
Carson Priest, Smart Commute North
Chris Chovan, Adams County
Christopher Montoya, COB
Karly Andrus, Northeast Transportation Connections
Kent Moorman, City of Thornton
David Krutsinger, City and County of Denver
Max Gesten, Downtown Denver Partnership
Noe Martinez, City of Brighton
Sara Dusenberry, City of Northglenn
Stephen Duhon, CAC
Tom Worker-Braddock, City of Aurora

Northwest Subregional Service Council - 11/9/2022

Andrew Iltis, Downtown Denver Partnership
Audrey DeBarros, Commuting Solutions
Carson Priest, Smart Commute North
Christina Lane, Jefferson County
Debra Baskett, City of Westminster
Jeff Hirt, City of Wheat Ridge
John Firouzi, City of Arvada
Kent Moorman, City of Thornton
Sara Dusenberry, City of Northglenn
Sarah Grant, City and County of Broomfield
Steve Durian, Jefferson County
Teague Kirkpatrick, Broomfield LCC
Travis Duea, CAC

Southeast Subregional Service Council - 11/10/2022

Allison Cutting, Douglas County
Andrea Suhaka, TSAC
Bryan Weimer, Arapahoe County
Bryce Matthews, City of Parker
Chris Nevitt, City and County of Denver



Coleen Samuels, DRMAC
Daniel Hutton, Denver South TMA
Jeremy Hanak, Greenwood Village
James Katzer, Arapahoe County
Melanie Ward, City of Centennial
Tom Worker-Braddock, City of Aurora
Seth Hoffman, City of Lone Tree
Stuart Anderson, Transportation Solutions

Boulder County Subregional Service Council – 11/17/2022

Angel Bond, Mobility and Access Coalition
Alex Atiniello, Superior
Bryn Grunwald, CAC
Carlos Hernandez, Erie
Danny O'Connor, City of Boulder
David Kimmett, Lyons
Elizabeth Relford, Weld County
Jonathan Singer, Boulder Chamber and Boulder Transportation Connections
Karen Worminghaus, Boulder Transportation Connections
Kathleen Bracke, Boulder County
Megan Davis, Louisville
Miguel Aguilar, Erie
Phil Greenwald, Longmont

RTD Staff and Consultants

Alicia Leitgeb, Planning Department
Brandon Figliolino, Communications Department
Charlie Stanfield, Planning Department
Chessy Brady, Planning Department
Cooper Langdon, Service Development
Dan Merritt, Service Development
Erin Vallejos, Contracted Services
Jennifer Webster, Catalyst
Jessie Carter, Service Development
Kelsie Ryan, Service Development
Manas Subbaraman, Service Development
Matthew Biskey, Service Development
Maux Sullivan, Service Development
Michael Davies, Communications Department
Nataly Handlos, Service Development
Tegan Rice, Service Development
William Sirois, Planning Department



**We Make Lives Better
Through Connections.**

Subregional Service Council Meeting 1

November 2022

Agenda

- Safety Moment
- Introductions
- Background
- Service Planning Basics
- NGO Representation
- Project Partnership Program
- Meeting #2 Look-Ahead



Background

Background

Accountability Committee recommended creation of Subregional Service Councils (SSCs)*

In response, RTD established working group to provide input on SSC formation:

- Consider purpose, role and operation of SSCs
- Identify membership of SSCs, including representation from local jurisdictions, transit advocates, RTD customers
- Evaluate council boundary concepts put forth by Accountability Committee

*Recommendations 8, 9, 10



Subregional Service Council Working Group Participants

Working Group Members

Stuart Anderson <i>Transportation Solutions</i>	Debra Baskett <i>Adams and Jefferson Counties</i>	Heather Britton <i>RTD CAC</i>	Kathleen Bracke <i>Boulder County</i>
Mac Callison <i>Arapahoe County</i>	Sarah Grant <i>Broomfield County</i>	Art Griffith <i>Douglas County</i>	Matthew Helfant <i>DRCOG</i>
David Krutsinger <i>Denver</i>	Earl Lee <i>ACPD</i>	Molly McKinley <i>Denver Streets Partnership</i>	Morgan Turner <i>Mile High Connects</i>

RTD Support

Chessy Brady <i>Planning</i>
Jessie Carter <i>Service Development</i>
Bill Sirois <i>Planning</i>
Charlie Stanfield <i>Planning</i>

❖ Met three times (Feb., March, Apr. 2022)

Working Group Recommendations

- Provide recommendations and feedback to RTD from subregional perspective
- Generate ongoing dialogue, more formal than existing service sector listening sessions
- Advisory bodies, not decision-making
- Meet 3-4 times/year (not tied to service change schedule)



Working Group Recommendations, cont'd

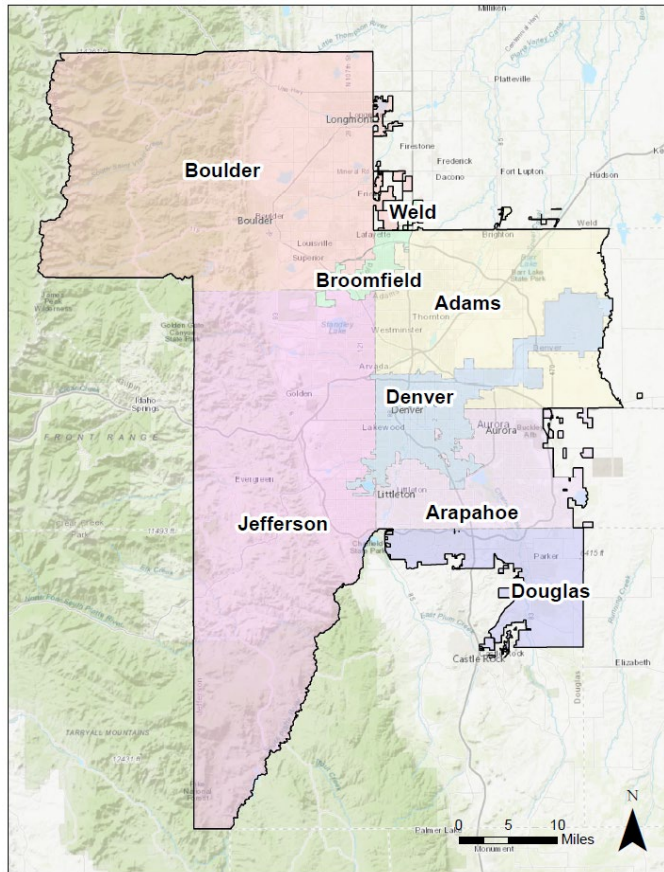
- Composition of SSCs:
 - Staff from cities and counties
 - Transit advocates (Transportation Management Associations, non-governmental organizations) representing customers
 - RTD staff
- Hold separate elected officials briefing 1-2 times per year
- Boundaries set based on travel shed



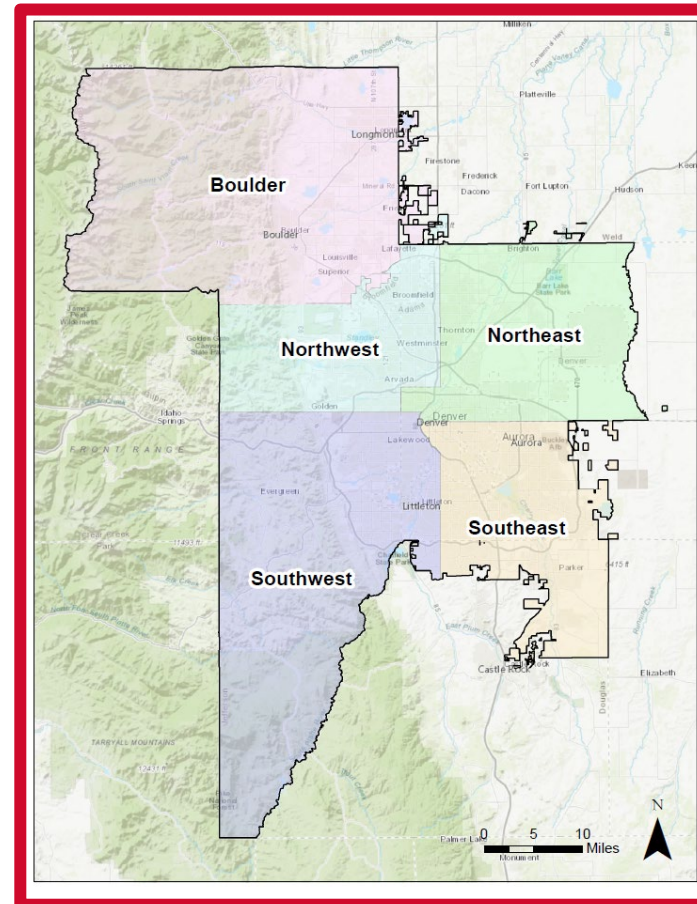
SSC Boundaries

- Most working group members favored Travel Shed option, which is small enough to allow for local transit needs to be voiced, but large enough for coordination with neighboring jurisdictions

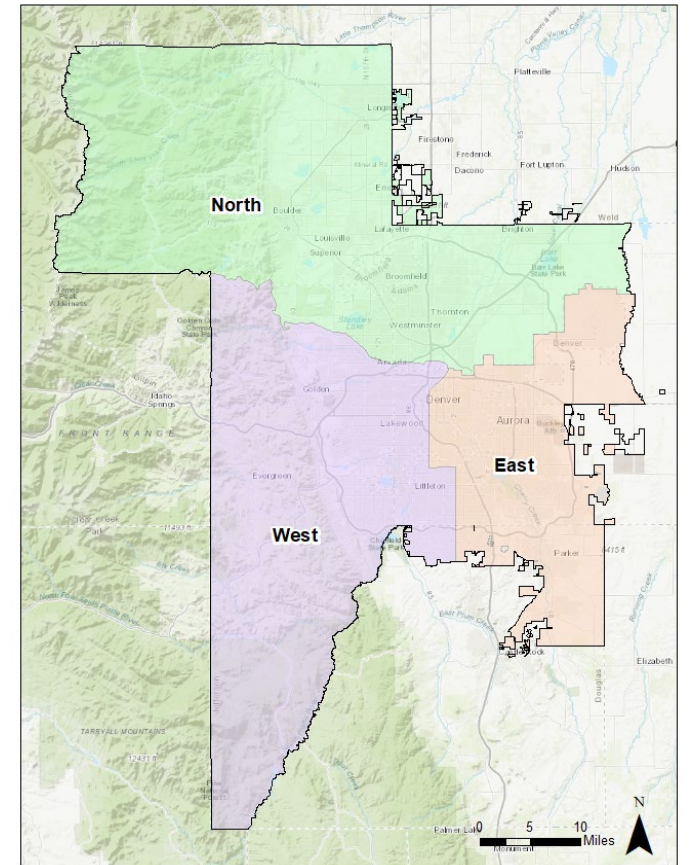
1. County-Based



2. Travel Shed



3. Service Planning Sectors



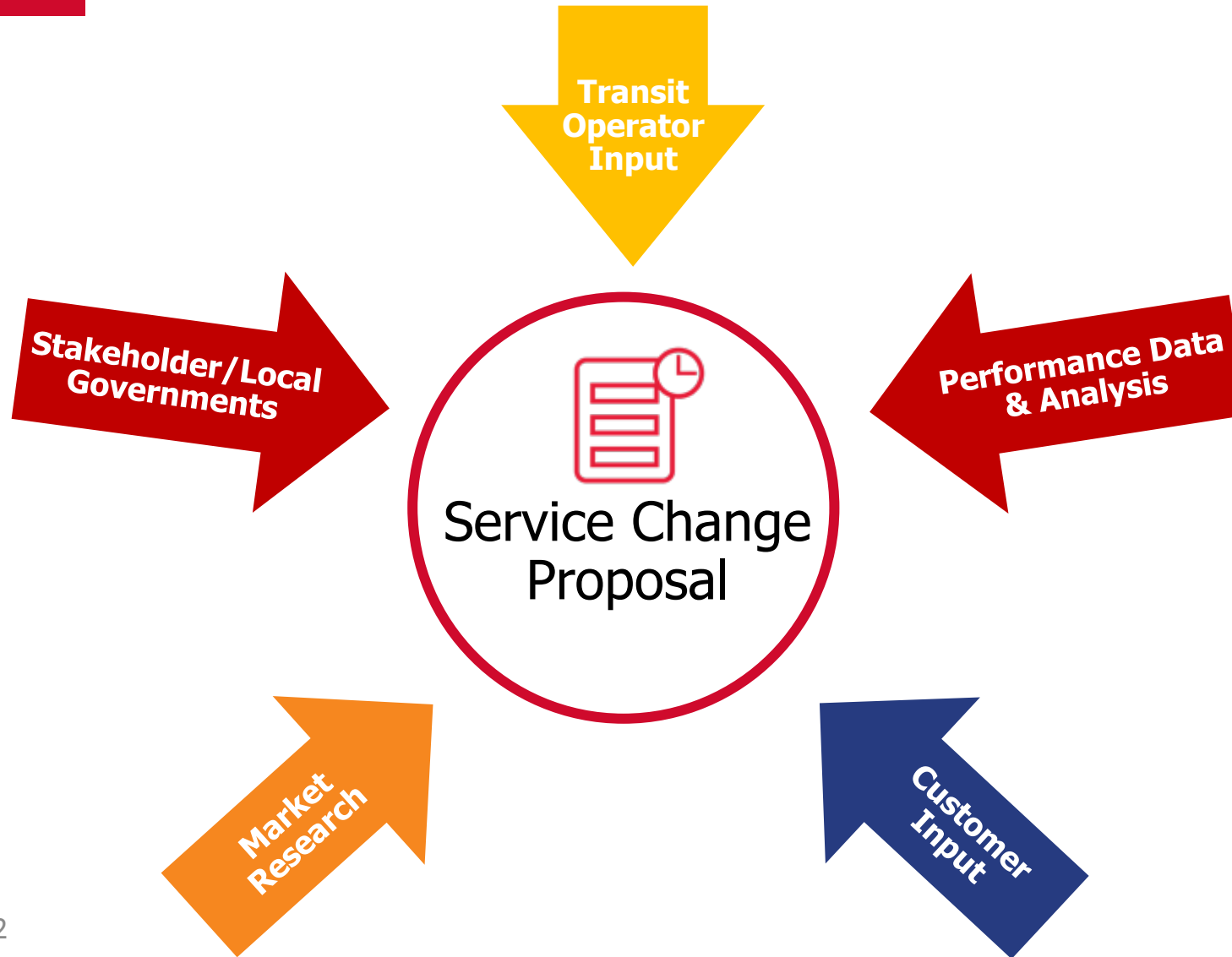
Service Planning Basics



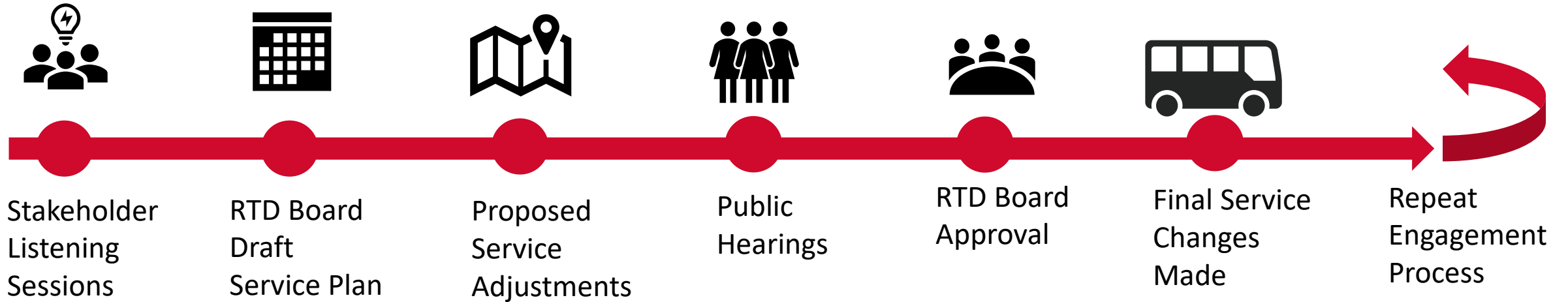
December 13, 2022

November 2022

Input to the Service Change Proposal



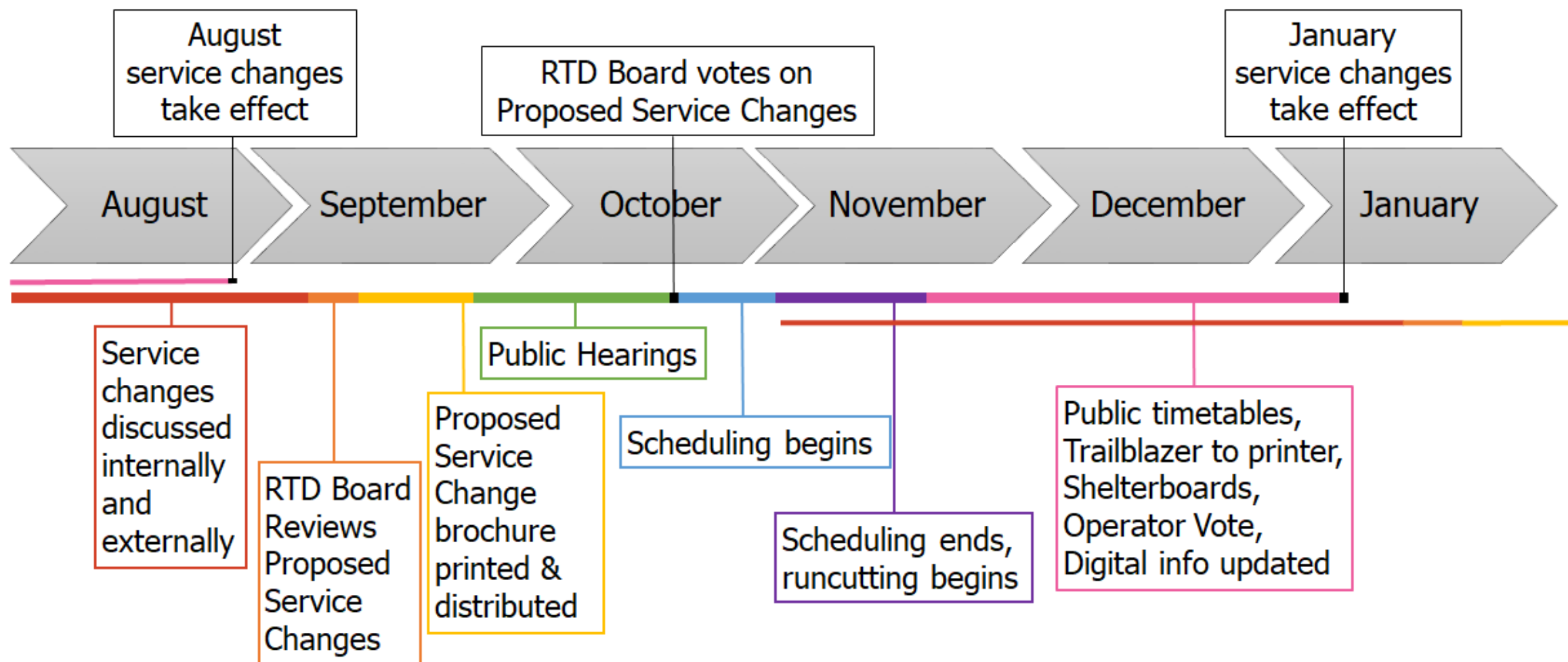
Engagement Process Lifecycle



Enhanced engagement is an ongoing process:

- Listening sessions generate input into proposed service adjustments
- Share listening session themes with stakeholders
- Host public meetings on proposed service adjustments
- Finalize service changes
- Review, refine and repeat engagement process

Service Planning Process



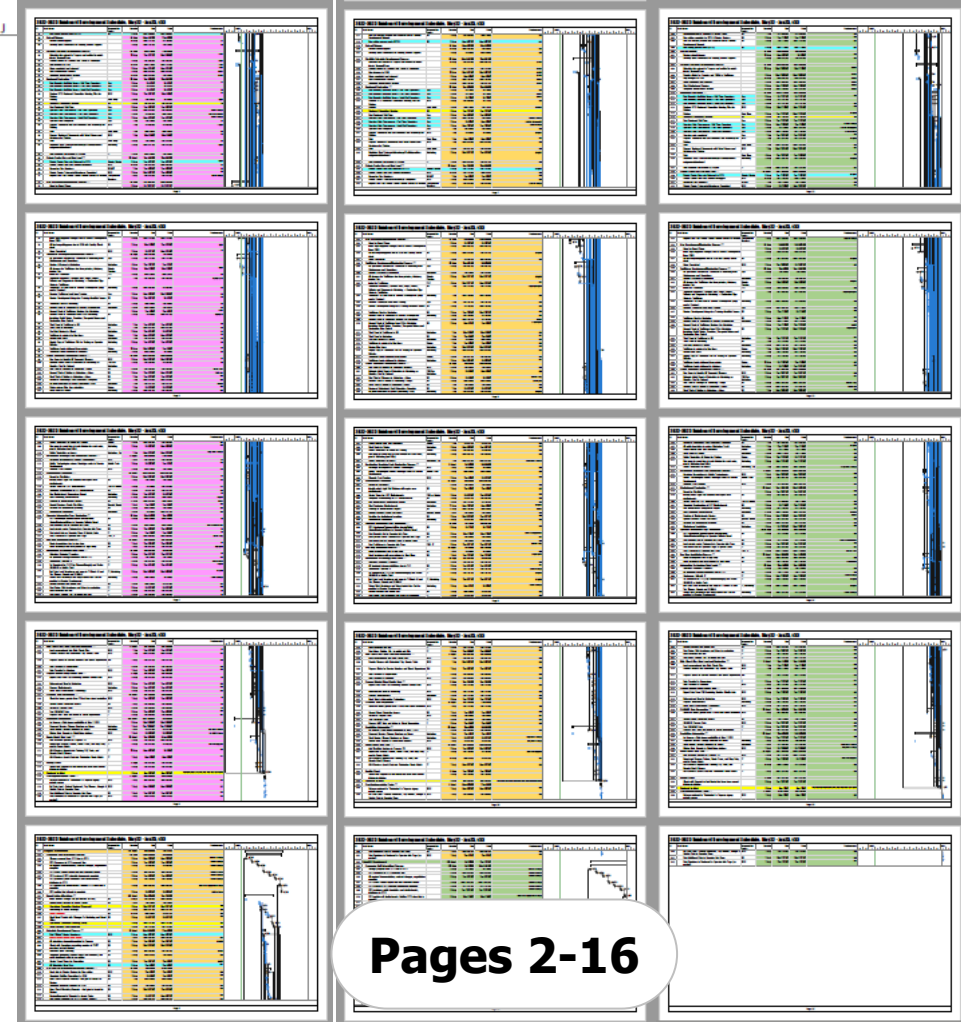
542-Step Runboard Process



2022-2023 Runboard Development Schedule, May22 - Jan23, v33

ID	Task Name	Responsible Group	Duration	Start	Finish	Predecessors	N	D	J	F	M	A	M	J
1	May22 Runboard		141 days?	Thu 11/18/21	Wed 6/1/22									
2	Commuter Rail Scheduling Changes		131 days	Fri 11/26/21	Fri 5/27/22									
3	Change proposal from DTO due to RTD		0 days	Fri 11/26/21	Fri 11/26/21	17555-131 days								
4	RTD Response to DTO proposal Due		0 days	Mon 12/27/21	Mon 12/27/21	3FS+22 days								
5	All required documentation, contract changes, negotiations complete		0 days	Thu 1/27/22	Thu 1/27/22	4FS+23 days								
6	DTO sends Hastus report with final schedule details		0 days	Fri 2/25/22	Fri 2/25/22	5FS+21 days								
7	RTD review of RTD schedule documents complete		0 days	Tue 3/29/22	Tue 3/29/22	6FS+22 days								
8	RTD produces public timetables and shelterboards, distributes to DTO		0 days	Thu 4/28/22	Thu 4/28/22	7FS+22 days								
9	DTO updates all shelterboards. Notifies RTD when this is complete		0 days	Mon 5/23/22	Mon 5/23/22	8FS+16 days; 17555-5 days								
10	RTD verifies that all work is complete		0 days	Fri 5/27/22	Fri 5/27/22	9FS+5 days								
11	Board Actions/Decisions ***		88 days?	Thu 11/18/21	Tue 3/22/22									
12	Initial Service Change List (for internal SD use)	SD	3 days?	Thu 11/18/21	Mon 11/22/21									
13	Submit Maps Needed for Board Packet	SD	1 day?	Mon 1/3/22	Mon 1/3/22									
14	Operations Committee Meeting (Proposed)		0 days	Wed 1/12/22	Wed 1/12/22	13								
15	Scheduling of Public Hearings	SD	0 days	Wed 1/12/22	Wed 1/12/22	14								
16	Public Meetings	SD	4 days	Thu 2/3/22	Tue 2/8/22	15								
17	Final Board Packet with Changes To Marketing and Board Office	SD	0 days	Tue 2/8/22	Tue 2/8/22	16								
18	Operations Committee Meeting (Final)		0 days	Wed 3/9/22	Wed 3/9/22	17								
19	Board Meeting (Final Approval)		0 days	Tue 3/22/22	Tue 3/22/22	18								
20	Schedule Development Process ***		32 days?	Tue 1/11/22	Wed 2/23/22									
21	Print 'Official' Master Headways	SDS	0 days	Mon 1/17/22	Mon 1/17/22									
22	Check Relief Points with Union		1 day?	Tue 1/11/22	Tue 1/11/22	13FS+5 days								
23	All schedules changed/completed in Trapeze	SD	13 days	Tue 2/1/22	Thu 2/17/22	13,22								
24	Check with Operations regarding number of FT/PT operators at each division	SD	0 days	Wed 2/9/22	Wed 2/9/22									
25	Schedule Error Checking	SD	3 days	Tue 2/15/22	Thu 2/17/22	23FF								
26	Complete Interlining, balance buses and divisions, and verify deadheads prior to run cutting	SD	4 days	Fri 2/18/22	Wed 2/23/22	25								
27	All Schedules Error Free	SD	0 days	Wed 2/23/22	Wed 2/23/22	26FF								
28	RTD Run cut Development/Selection Process ***		25 days	Wed 2/23/22	Wed 3/30/22									
29	Create Travel Times for Runcutting	SD	3 days	Thu 2/24/22	Mon 2/28/22	26FF,27								
30	Send data to Private Carriers for Run cutting	SDS	0 days	Wed 2/23/22	Wed 2/23/22	27								
31	Complete Sat/Sun Runcutting by COB	SD	5 days	Thu 2/24/22	Wed 3/2/22	27								
32	Error Check Sat/Sun Runcuts - And give to Jessie for Review	SD	5 days	Thu 3/3/22	Wed 3/9/22	31								
33	Complete Weekday Runcuts by COB	SD	7 days	Thu 3/3/22	Fri 3/11/22	31								
34	Error Check Weekday Runcuts - And give to Jessie for Review	SD			3/15/22	33								
35	Review/Approval of Runcuts by Jessie Carter	SD			3/29/22	34								
36	Run cut selected, loaded and balanced and to Service Development Support	SD			3/30/22	35								

Page 1



Pages 2-16

NGO Representation

RTD Project Partnership Program

Overview

- Partnership Commitment
- Current Activity
- Policy and Goals
- Program Framework
- Performance Metrics

Partnership Commitment



1994 Board-Adopted Policy



Strategic Plan 2021-2026



Reimagine RTD



Mobility Choice Blueprint



RTD Accountability Committee

RTD has demonstrated a commitment to bolstering and building partnerships, which are recognized as key to meeting transit needs and connecting customers to the places they want and need to go.

Current Partnerships

- **Cost Sharing** – provides funds to local organizations and municipalities to support specific services
- **Innovative Mobility Pilot** – operates service initiated by a partner agency through a grant program to test viability of service in a new or emerging market
- **Third Party Operations** – supports service operated by others through integrated trip planning and payment, technical advisory services, or compliance support



Current Partnerships (cont'd)

Partnership	Partner Role	RTD Funding	Local Funding	Subregion	Description
Boulder County – Various Non-profits	Operate Fund	\$337,236	Varies	Boulder	Since 1993, RTD has funded private, non-profit agencies to assist with the provision of demand response services in non-urbanized areas within the district.
City of Longmont – Fare free	Fund fares	\$0	\$224,688	Boulder	In 2014, Boulder County began buying up all fares on the 300 series routes in Longmont to offer free fares and increase mobility options for low-income riders.
City of Boulder – HOP	Operate Fund	\$1,356,928	\$1,835,844	Boulder	Since 2014, the City of Boulder has supplemented RTD's bus service by providing circulator bus service known as the HOP. It is funded by Boulder, RTD, and CU.
	Boulder Subtotal	\$1,694,164	\$2,060,532		
DRCOG – Way to Go Vanpool	Manage Fund	\$663,000	Varies	District-wide	Since 2001, RTD has supported this program (underwriting the pricing structure, providing incentives for drivers, and providing capital funding for vans). Vans carry six to twelve riders and are driven and maintained by a vanpool participant.
Uber Paratransit Pilot	Operate	\$1,400,000	\$0	District-wide	Currently underway as a pilot; planned as an ongoing partnership. Supplements Access-a-Ride and Access-a-Cab in four zip codes to meet demand during peaks.
	District-wide Subtotal	\$2,063,000	\$0		
Metro Taxi FlexRide	Operate	\$20,000	\$0	Southeast	Currently underway. Supplements seven RTD FlexRides with the goal of providing better midday service.
Douglas County – Various Non-profits	Operate Fund	\$130,050	Varies	Southeast	RTD provides Douglas County with support for demand-response transportation, call center operations, and vehicle acquisition for parts of the county within the district.
	SE Subtotal	\$150,050	\$0		

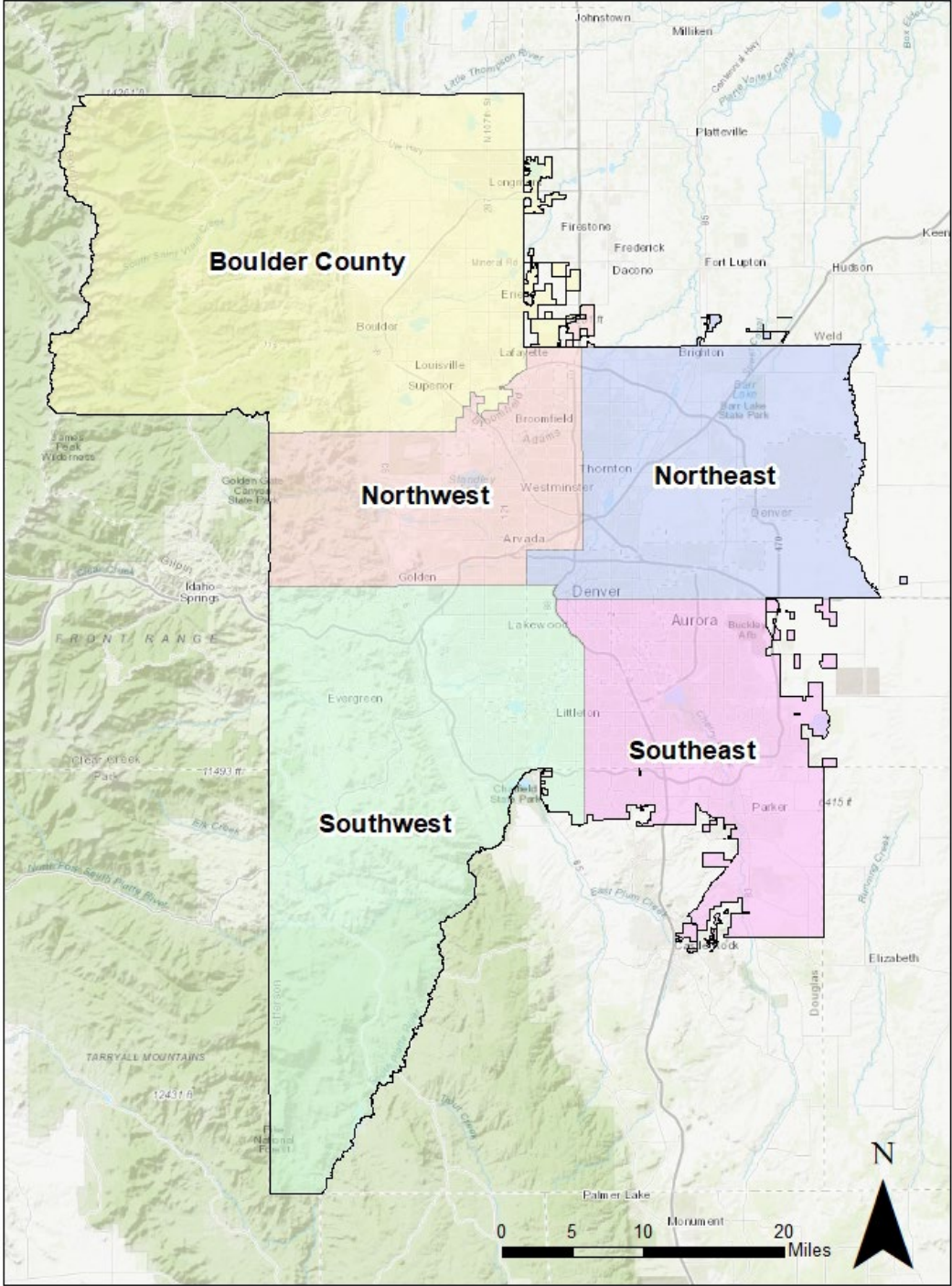
Current Partnerships (cont'd)

Partnership	Partner Role	RTD funding	Local Funding	Subregion	Description
Focus Point Family Resource Center	Operate Fund	\$48,113	\$0	Northeast	In 2004, RTD discontinued Route 47; as an alternative RTD entered into an agreement with FPFRC to provide a new community-based service.
Adams County – Various Non-profits	Operate Fund	\$330,776	Varies	Northeast	Since 1993, RTD has funded private, non-profit agencies to assist with the provision of demand response services in non-urbanized areas within the district.
	NE Subtotal	\$378,889	\$0		
Jefferson County – Various Non-profits	Operate Fund	\$117,473	Varies	Southwest	Since 1991, RTD has funded private, non-profit agencies to assist with the provision of demand response services in non-urbanized areas within the district.
City of Englewood – Englewood Trolley	Operate Fund	\$323,055	\$99,569	Southwest	The Trolley began as the Art Shuttle in 2004. It was funded through CMAQ until 2007 and is currently funded by RTD and Englewood.
	SW Subtotal	\$440,528	\$99,569		
Smart Commute – Wagon Road FlexRide	Grant to initiate service	Not-to-exceed \$280,259 including fuel	20% of actual expenditures	Northwest	In 2019, Smart Commute was awarded a CMAQ grant for implementation of a new micro transit service in the northern area of the RTD district, which became the Wagon Road FlexRide. As a direct recipient of federal funds, RTD and Smart Commute entered into an agreement that assigned these funds to RTD for operation of the service and established Smart Commute as a subrecipient of the funds.
City and County of Broomfield – Broomfield FlexRide	Grant to initiate service	Included above with Wagon Road	20% of actual expenditures	Northwest	In 2016, the City and County of Broomfield was awarded a CMAQ grant for RTD to provide an expanded Broomfield FlexRide service. In 2019, the City and County of Broomfield was awarded a new grant to continue the service and explore future expansion. RTD and the City and County entered into an agreement in July of 2021 to assign the new funds to RTD to allow for the additional service through 2024.
	NW Subtotal	\$280,259	TBD		
	Overall Total	\$5,231,578	\$2,160,101		

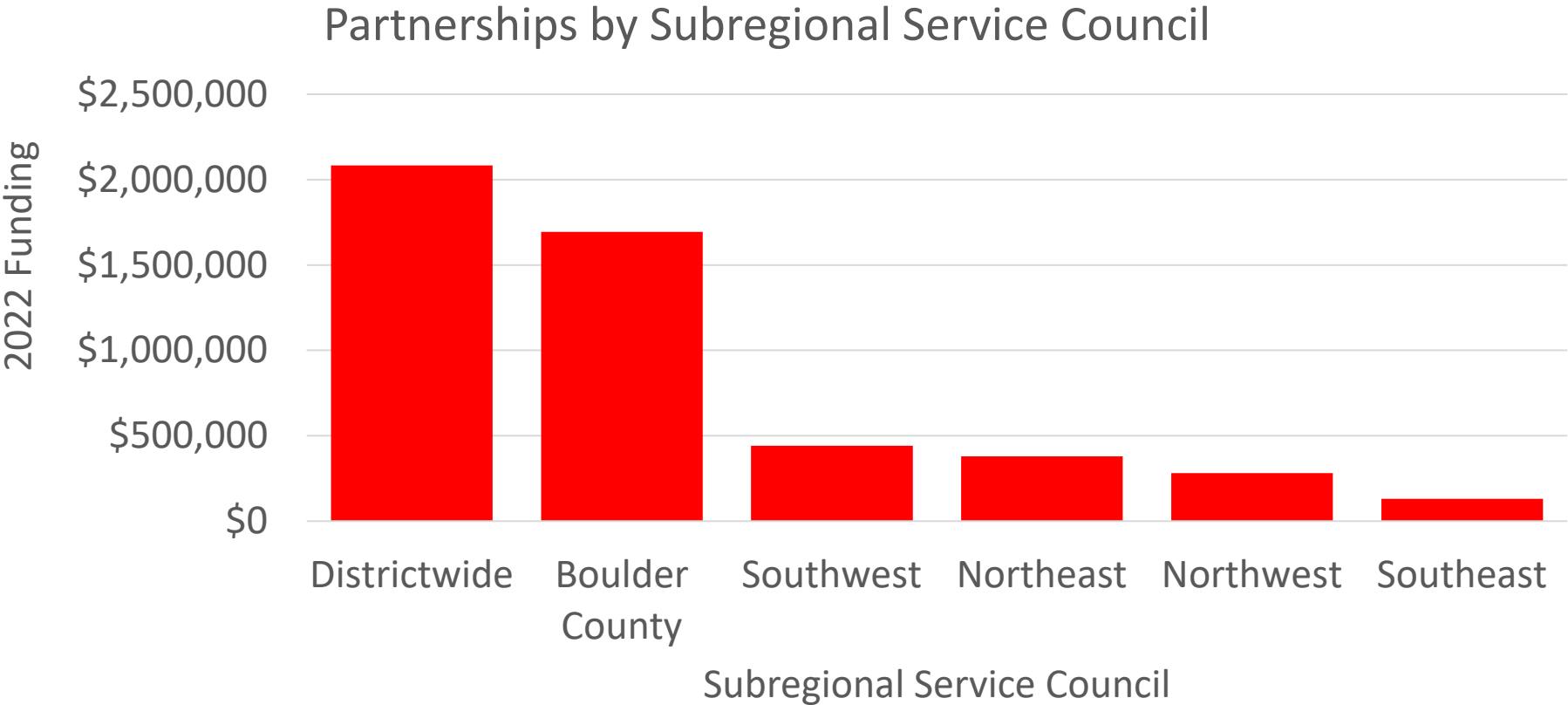
Locally Funded Projects

Partnership	RTD funding	Local Funding	Subregion
City of Englewood – Englewood Trolley	\$323,055	\$99,569 (23.5%)	Southwest
Smart Commute – Wagon Road FlexRide	Not-to-exceed \$280,259 including fuel	20% of actual expenditures	Northwest
City and County of Broomfield – Broomfield FlexRide	Included above with Wagon Road	20% of actual expenditures	Northwest
City of Longmont – Fare free	\$0	\$224,688	Boulder
City of Boulder – HOP	\$1,356,928	\$1,835,844 (57.5%)	Boulder
DRCOG – Way to Go Vanpool	\$663,000	DRCOG contributes to vanpools that are not 100% within the District; varies over time	District- wide
County-Based Demand Response Services	\$915,535	No direct contribution, but RTD funding allows resources to be directed to other areas/services	Multiple

Current Partnerships – Subregional Service Councils



Subregional Service Councils (cont'd)



Transit Service Cost Sharing Policy

- Board adopted June 1994
- Guides new service requests staff response (see Section 13, RTD Service Standards)
- Provides general guidance on:
 - Financial feasibility
 - Local and community support
 - Vehicle availability
 - Performance



2022 Partnerships Policy

- Expands existing cost-sharing policy
- Guides partnership approach
- Improves partnership process transparency, standardization and efficacy
- Defines partnership annual budget
- Supports local travel needs
- Prioritizes limited financial and technical resources
- Provides stakeholder clarity

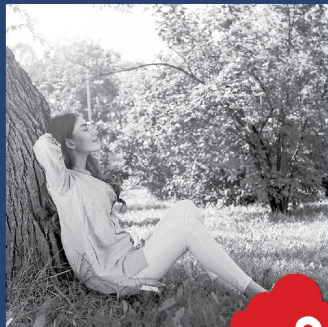
Program Goals That Reflect Policy

- Advance Reimagine RTD guiding principles



Equity

Remove barriers to accessing transportation services that enable customers to have the freedom to get where they want to go.



Sustainability

Provide sustainable mobility options while continually seeking to reduce our environmental impact.



Mobility

Provide safe, reliable transportation service to improve the quality of life of residents, customers, and visitors.



Financial

Leverage our resources and maximize cost efficiencies, serving as good stewards of taxpayer dollars.



Partnerships

Pursue partnerships with both public and private organizations that help identify innovative opportunities to enhance mobility throughout our region.



Workforce

Foster a dynamic, diverse workforce that promotes engagement and innovation, recognizing team members as our greatest asset.

Program Goals (cont'd)

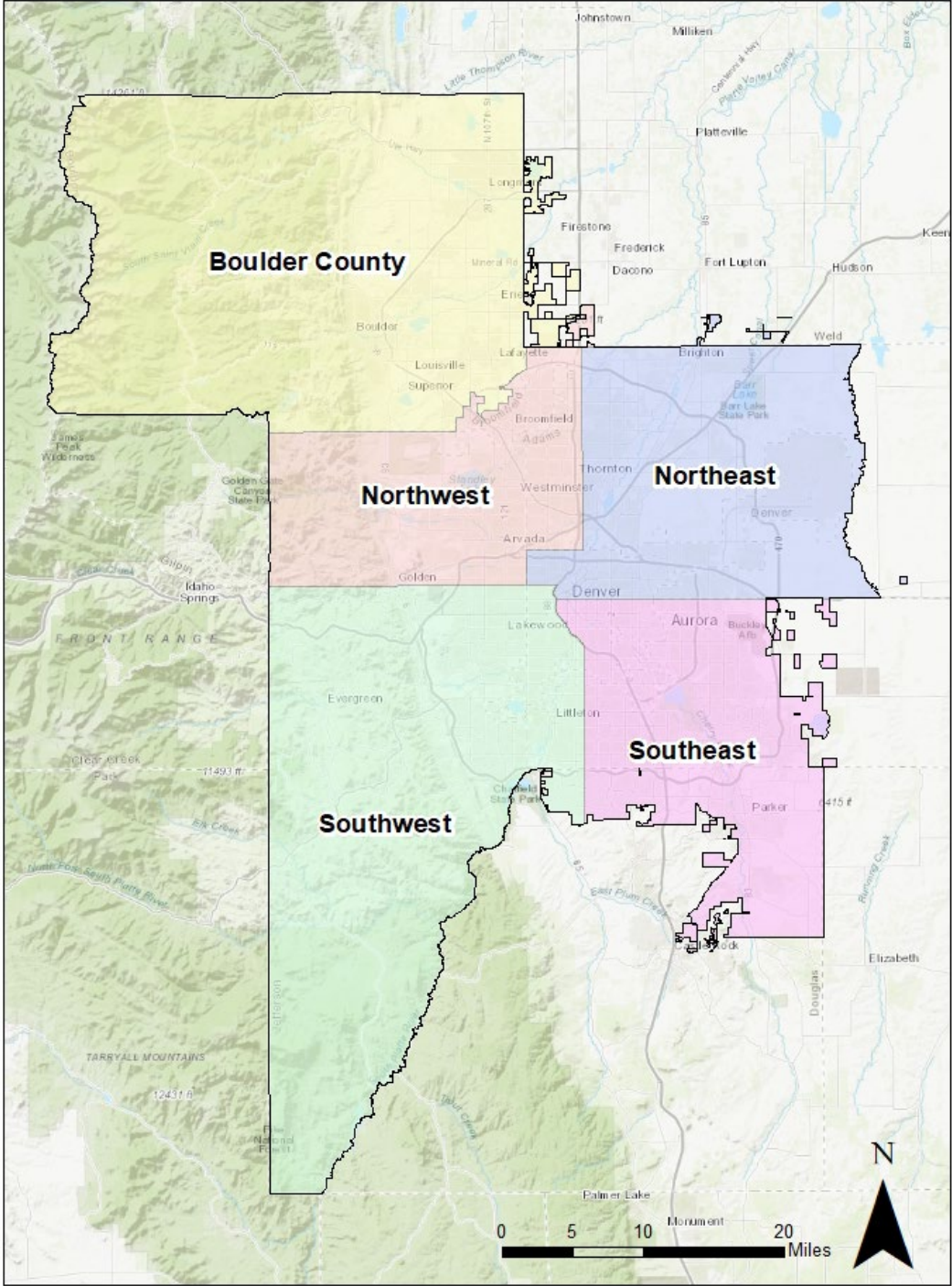
- Address regional and local travel needs
- Enhance regional mobility
- Increase regional transit funding
- Leverage funding from private entities, non-profits, and local governments to provide additional and improved transit service within the district
- Ensure partnership implementation/continuation decisions based on clear, measurable criteria
- Foster Strategic Plan priorities and success outcomes
- Prioritize equity populations

Program Framework

- Define a **dedicated position partnership lead within Contracted Services**
- Provide partnership lead **support**
 - Application evaluation by representatives from multiple departments
 - Ongoing management and annual evaluation
- Create a **dedicated budget set-aside** for partnership matching
- Leverage **Subregional Service Councils**



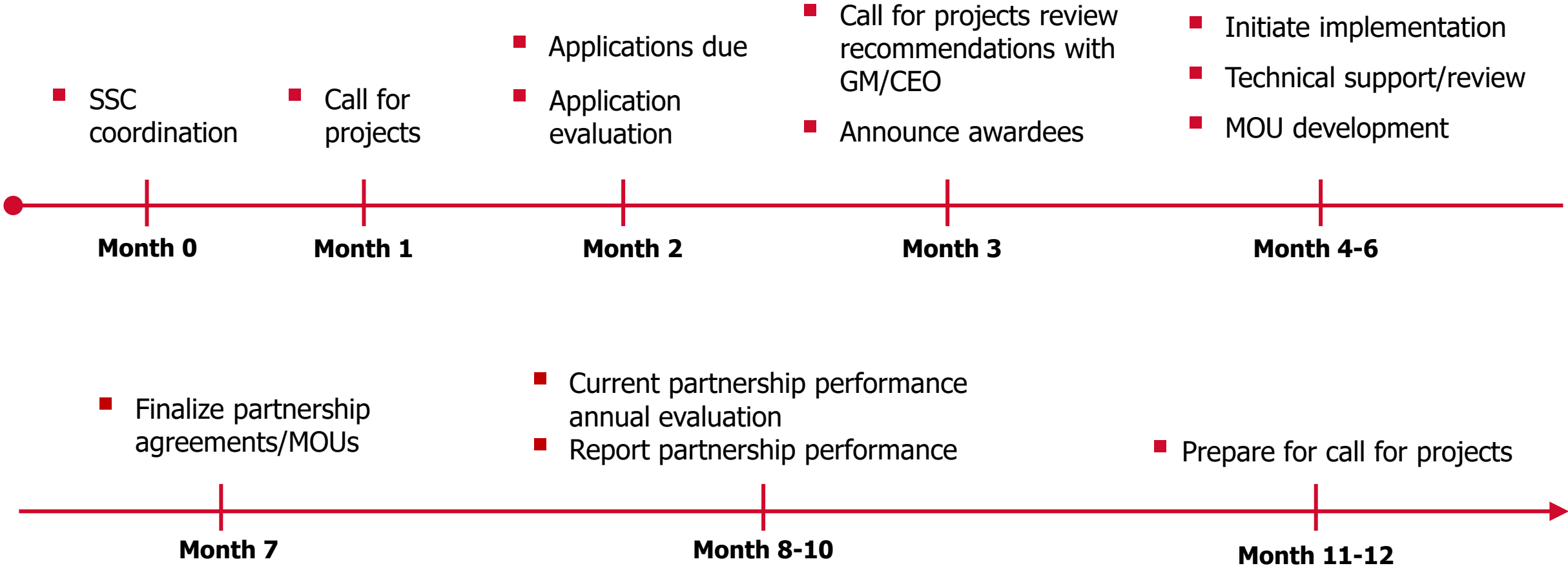
Subregional Service Councils



Subregional Service Councils

Service Council	Municipalities	Counties	TMA	NGOs	Population	Boardings (Aug 2019)	Director Districts
Southeast	Aurora, Centennial, Cherry Hills Village, Denver, Glendale, Greenwood Village, Lone Tree, Parker	Arapahoe, Denver, Douglas	Transportation Solutions, Denver South	TBD	957,742	84,661	A, C, D, E, F, G, H
Southwest	Denver, Englewood, Golden, Lakewood, Littleton	Arapahoe, Denver, Douglas, Jefferson	West Corridor TMA	TBD	635,653	58,773	C, D, H, M, N
Northeast	Aurora, Brighton, Commerce City, Denver, Northglenn, Thornton	Adams, Denver	Northeast Transportation Connections, Downtown Denver Partnership, Smart Commute North	TBD	571,707	160,777	B, C, I, J, K, L
Northwest	Arvada, Broomfield, Northglenn, Thornton, Federal Heights, Westminster, Wheat Ridge	Adams, Broomfield, Jefferson	Smart Commute North, Commuting Solutions	TBD	462,953	23,362	C, I, J, L, M, N
Boulder County	Boulder, Erie, Longmont, Lafayette, Louisville, Lyons, Nederland, Superior	Boulder	Smart Commute North, Commuting Solutions, Boulder Transportation Connections	TBD	330,983	27,448	I, O

Partnership Program Workflow



Proposed 2023 Call for Projects

- First call for projects expected by Summer 2023
- Subregional Service Councils will have a max number of applications; Service Council should coordinate
- Only local governments and non-profits are eligible
- \$2 million available for 2023; amount will vary year-to-year based on Board action
- No more than 30% of program funding to one subregion
- RTD will fund up to 80% of project costs; local match can be reduced if serving equity zones
- Existing partnerships will be rolled into this process starting in 2024

Partnership Intake Form

Applicant Information

Entity Name:

Point of Contact:

Email:

Phone Number:

Project Title:

Description of Project Location: *Include map of service area as an attachment, if appropriate*

Project Summary:

Project Information

Project Type (select one)

☐ Fixed-route transit service

☐ On-demand transit service

☐ Fare buy-up

☐ Other (describe)

Project Description. Please answer the following questions with as much detail as possible. Please note "N/A" for questions that do not apply to your project.

For funding requests for transit service, please answer the following questions:

What are the hours of operation?

Who do you anticipate will operate the service?

Will you charge a fare for the service?

Project Selection Criteria



Alignment with RTD Strategic Plan



Local support and ability to meet local needs



Provides service where there is a gap in existing service







Provides service to equity zones



Potential ridership

Performance Metrics

- Annual evaluation based on performance metrics
- Metrics will be flexible and varied
- Will follow established industry performance standards
- Must consider transit-dependent customers
- Should align with RTD Strategic Plan

Service Category	Category Description
Core	High-frequency regionally focused local bus and rail routes that provide a guaranteed base level of mobility with a minimum 18-hour span of service, minimum 15-min peak and midday weekday frequency, service seven days a week  Examples: Flatiron Flyer, 15, E, 30/31
Connect	Regionally focused local bus and rail routes with a minimum 14-hour span of service (6AM to 8PM)  Examples: 100, 24, 92
Commute	Regional bus routes with limited stop spacing focused on serving a unique travel market (e.g., downtown workforce, DEN workforce and travelers)  Examples: SkyRide, P, LX
Community	Community-focused local routes with custom-built span of service, frequency, and days of service to meet local needs  Examples: 16th St. Mall Ride, Longmont local routes, Boulder local routes, 402L, FlexRide services, MOD ridehailing partnerships

Travel Market Service Categories per System Optimization Plan Route Recommendations, Dec 2021

Partnership Continuation

- Annual evaluations guide partnership continuation
 - Occur every two to four years
 - Allow partnership evolution
 - Allow a year to gauge improvement
 - Use application process as screening mechanism



Meeting #2

Look-Ahead

Future Topics

- Update on Project Partnerships Program
- REIMAGINE and System Optimization Plan
- Workforce Update
- Council member Updates
- *What else?*





Thank you.

rtd-denver.com

Community Engagement Report Communications Department November 2022

The Community Engagement team participated in eight community outreach events engaging with over 200 people in November 2022.

The engagement activities included five Subregional Service Council meetings, a Career Learning Day with Adams County students, and participation in an outreach event with the Northeast Transportation Connections, a transportation management association (TMA), to promote its new connector bus service.

The Career Learning Day and the promotion of the connector bus service were held in person while the Subregional Service Council meetings were held virtually.

All Board districts were represented in this month's engagement activities.

The table below details the events and activities along with their purpose and the number of customers and/or community members involved.

Date	Time	Event/Audience	District	Purpose – Topic/Information	Number of Participants
11/2/22	3:30-5 p.m.	Southwest Subregional Service Council	N, D, H	As per the Accountability Study. Introductory and organizational meeting to discuss purpose, structure and membership of council, including non-governmental organizations representation. Presented service planning basics. Discussed partnership program and new, formal process for stakeholders to apply for \$2M allocated funds for projects that supplement transit service.	12
11/3/22	3:30-5 p.m.	Northeast Subregional Service Council	I, J, L, B	As per the Accountability Study. Introductory and organizational meeting to discuss purpose, structure and membership of council, including non-governmental organizations representation. Presented service planning basics. Discussed partnership program and new, formal process for stakeholders to apply for \$2M allocated funds for projects that supplement transit service.	12



11/8/22	8-11:30 a.m.	Adams County Schools Career Learning Day	B, K	Provided information to students and their parents on transit careers, benefits of taking transit, youth discounts, and assisted with route-mapping	142
11/9/22	3:30-5 p.m.	Northwest Subregional Service Council	L, M, C	As per the Accountability Study. Introductory and organizational meeting to discuss purpose, structure and membership of council, including non-governmental organizations representation. Presented service planning basics. Discussed partnership program and new, formal process for stakeholders to apply for \$2M allocated funds for projects that supplement transit service.	11
11/10/22	3:30-5 p.m.	Southeast Subregional Service Council	G, E, F, A	As per the Accountability Study. Introductory and organizational meeting to discuss purpose, structure and membership of council, including non-governmental organizations representation. Presented service planning basics. Discussed partnership program and new, formal process for stakeholders to apply for \$2M allocated funds for projects that supplement transit service.	12
11/15/22	3:30-5 p.m.	Boulder Subregional Service Council	O	As per the Accountability Study. Introductory and organizational meeting to discuss purpose, structure and membership of council, including non-governmental organizations representation. Presented service planning basics. Discussed partnership program and new, formal process for stakeholders to apply for \$2M allocated funds for projects that supplement transit service.	12
11/16/22	8-10 a.m.	Northeast Transportation Connections	B, C	Provided information and displayed NETC's new Globeville Elyria Swansea Connector bus. RTD shared information on its e-bike policy, how to connect trips using the Connector, and answered questions about safety and service. Due to temperatures below freezing, not many people were out at the 41st•Fox Station.	15
Customer/Public interactions					216

Bus Operations October 2022

On-Time Performance	Month	Service Availability	On Time Performance	YTD On-Time Performance
Local	October	98.68%	82%	82.7%
Regional			81.8%	82.3%
Regional BRT			81.3%	86.4%

Lost Service between Road Calls	Month	Actual Miles	Goal Miles
All Bus	October	51,914	> 30,000

Preventable Accidents per 100,000 Miles	October	Year to Date
All Bus	2.03	1.56

Recruitment/Retention				
Bus Operators	2022		2021	
	Hired	Separated	Hired	Separated
October	20	6	0	21
Year to Date	125	90	148	245

Headcount				
Bus Operators	Budgeted	Current	Vacancies	Vacancy Ratio
Part-Time	102	80	22	21.57%
Full-Time	850	681	169	19.88%
Total	952	761	191	20.06%

Rail Operations October 2022

Rail On-Time Performance	Month	Service Availability	On Time Performance	YTD On-Time Performance
Light Rail Operations	October	97.67%*	92.50%	92.42%
A, B, G Line – Commuter Rail	October	94.21%**	94.0%	92.6%
N Line – Commuter Rail	October	97.94%	96.5%	90.7%

* Due to Operator Shortage

** Due to No Second Crewperson

Light Rail Mean Distance Between Failures	Month	Actual	Goal
Light Rail Vehicles	October	32,815 miles	> 25,000 miles
Light Rail Maintenance of Way (MOW)	October	1,831 hours	> 2,500 hours

*Due to Signal Failures

Light Rail Preventable Accidents	October	Year to Date
Light Rail Operations	0	0

Recruitment/Retention **				
	2022		2021	
	Hired	Separated	Hired	Separated
October	8	2	0	4
Year to Date	48	63	45	63

** Includes Operator and Operator Trainees

Light Rail Operator Headcount				
	Budgeted	Current	Vacancies	Vacancy Ratio
Part-Time	3	3	0	0%
Full-Time	190	165	25	13%
Total	192	168	25	13%

November 2022 Agreements

Contract/Reference No. (if applicable)	Date of Contract	(Non-RTD) Party(ies)	Short Contract Description	Dollar Amount
16DO030 - WO 32	11/28/22	Alfred Benesch and Company	Contract reconciliation to recapture contract authority	(\$171,180.00)
122DH014-Ka - WO 01	11/03/22	Kahn Construction Corp.	711 Building Cabinet millwork	\$6,141.00
322DH032 - CO 01	11/03/22	Krische Construction	18th/Stout Rail Replacement - Concrete credit	(15,450.00)
122DH014-Ka - WO 02	11/08/22	Kahn Construction Corp.	DUS Door Repair	\$11,575.00
322DP001 - CO 01	11/20/22	Sunnyside Landscape Solutions	Controller scope change	(\$14,166.00)
122DH014-H - WO 01	11/20/22	HPM Contracting	Station irrigation winterization	\$13,923.00
121RB059 - CO 01	11/22/22	Restruction	East Metro emergency inspection pit repair Phase 1; conditions differing from plan	\$44,553.50
322DH032 - CO 03	11/29/22	Krische Construction	18th/Stout Rail Replacement - Permit Fee credit	(15,012.00)
14FH001 - CO 138	11/22/22	Triunity Hill	2023 First Half Work Plan – January through June	\$657,019.00
18FH013 - WO 13	11/29/22	Rocksol	Additional Park-n-Ride testing	\$15,000.00
Use Permit	11/03/22	City of Lone Tree	Participate to meet for coffee, etc. prior to Bicycle Colorado/ City of Lone Tree Light Rail Tour	
Right of Entry Agreement for Utility Locates	11/03/22	Goodbee & Associates, Inc.	Access to rail right of way north of E. 112th, west of York St. for utility locates in connection of design of trail lighting	
License Agreement for Electric Wire Line Crossing	11/08/22	Public Service Company of Colorado	Electric wirelines 15' below base of rail at 47th Avenue and Marion Street	

Right of Entry Agreement for Pipeline Bypass System	11/08/22	Insituform Technologies, LLC	Blake Street between 31st and 35th Street, City and County of Denver	
Use Permit	11/14/22	Northeast Transportation Connections	41st & Fox Street and 40th and Colorado Stations	
Second Amendment to Contractor's Right of Entry Agreement	11/15/22	Christopher Rensch d/b/a CJR Design	Installation of art at North Metro Stations (N-Line)	
License Agreement for Pedestrian Bridge	11/15/22	City of Aurora	Design, build, own and maintain a pedestrian bridge to span Parker Road with a touchdown at the Nine Mile PnR facility	
License Agreement for Fiber Optic Crossing	11/17/22	Jefferson County School District	Fiber Optic Crossing at 6th Avenue at Flora Way	
Contractor's Right of Entry	11/17/22	Henkels & McCoy	Fiber Optic Crossing at 6th Avenue at Flora Way	
License Agreement for Installation of a gas pipeline	11/18/22	Public Service Company of Colorado	Construct and maintain gas pipeline within certain portions of the Boulder Industrial Lease ROW	
Right of Entry Agreement - Storm Sewer Pipeline Extension	11/22/22	Sand Creek Metropolitan District	SCMD to access easements on RTD property for the purpose of extending storm sewer pipeline	

Claim Number	Coverage	Transaction Date	Amount
L193075401MF	Auto BI	11/7/2022	27,000.00
L2233363KT	Auto PD	11/7/2022	13,750.00
L2233253KT	Auto PD	11/7/2022	329.27
L2233253KT	Auto PD	11/7/2022	316.57
L2233352KT	Auto PD	11/9/2022	205.60
L2233366KT	Auto PD	11/14/2022	687.40
L2233253KT	Auto PD	11/14/2022	245.55
L2233378KT	Auto PD	11/14/2022	8,571.34
L2233193KT	Auto PD	11/14/2022	2,309.56
L2233115KT	Auto PD	11/14/2022	1,999.51
L2233132JE	Auto PD	11/14/2022	500.00
L2233352KT	Auto PD	11/16/2022	170.11
L2233115KT	Auto PD	11/16/2022	1,662.95
L2233320KT	Auto PD	11/16/2022	1,036.64
L2233320KT	Auto PD	11/16/2022	337.52
L2233375KT	Auto PD	11/16/2022	216.94
L2233254KT	Auto PD	11/21/2022	2,515.85
L2233319KT	Auto PD	11/22/2022	294.38
L2233268KT	Auto PD	11/22/2022	1,906.59
L2233319KT	Auto PD	11/28/2022	2,085.79
Grand Totals - 20 Transactions			

Summary of Monthly Purchasing Activity and New Contracts - November 2022

This summary is in three parts as listed below:

- Part I is a listing of all new contracts issued during the reporting month not captured on the November 2022 Monthly Purchase Order Activity Report
- Part II is a printout of the November 2022 Monthly Purchase Order Activity Report
- Part III is a summary of November 2022 Purchase Orders and Purchasing Card activity and a graph illustrating purchasing card activity for the reporting month compared to previous months



PART I

**ALL NEW CONTRACTS ISSUED DURING THE REPORTING MONTH NOT
CAPTURED ON NOVEMBER 2022 MONTHLY PURCHASE ORDER ACTIVITY REPORT**



NEW CONTRACTS ISSUED DURING
NOVEMBER 2022 NOT CAPTURED ON RTD NOVEMBER 2022 MONTHLY PURCHASE ORDER REPORT

PO/CONTRACT NO. - CONTRACT		PURCHASE ORDER DATE		CONTRACT AMOUNT
122DM006/227612 Facilities Maintenance Air Filters (Camfil USA, Inc.)		11/14/2022	\$	850,685.70
122DM007 Predictive Vehicle Maintenance (Preteckt, Inc.)		11/16/2022	\$	487,296.00
322FH027 Welton Street Safety Improvement (Krische Construction, Inc.)		11/22/2022	\$	4,395,002.00
822DK004/227224 ServiceNow Governance, Risk and Compliance (GRC) Software renewals (Carahsoft, Inc.)		11/4/2022	\$	149,704.65
227154 Microsoft Premier Support Services (Microsoft Corporation)		11/1/2022	\$	274,440.44
121DM004/219039 Leased Bus Tires (Michelin North America, Inc.)		11/16/2022	\$	1,966,000.00
19DD001/190588 Platte Boiler Project (Rasmussen Mechanical Services)		11/7/2022	\$	839,955.00
19DX001/195382 Federal Liaison Services (Squire Patton Boggs LLP)		11/22/2022	\$	336,000.00



PART II
NOVEMBER 2022 MONTHLY PURCHASE ORDER
ACTIVITY REPORT FOR NEW PURCHASES



RTD:PO - Purchase Order Monthly Activity Old

PO Creation Date - From Date: 11/01/2022 To Date: 11/30/2022

Run Date: 12/06/2022

Page 1 of 38

<u>PO Vendor Name</u>	<u>PO Number</u>	<u>PO Date</u>	<u>Description</u>	<u>PO Amount</u>
A & E Tire Inc	228107	11/21/22	Tires for T286	\$3,792.28
Total for Vendor:	A & E Tire Inc			\$3,792.28
AAA Metric Supply LLC	227777	11/09/22	NUT M 30 HEX DIN 985 COUPLER NYLOCK LRV	\$350.00
	227998	11/16/22	SCREW M6X16 DIN7984 AXLE LRV	\$148.00
Total for Vendor:	AAA Metric Supply LLC			\$498.00
AAF International	227695	11/08/22	FILTER 1650 5.25 INCH X 63.25 INCH 2-PLY RING PANEL	\$967.20
Total for Vendor:	AAF International			\$967.20
ABM Fabrication and Machining LLC	227669	11/06/22	COVER ACCUMULATOR SHIELD BOX LRV	\$458.75
Total for Vendor:	ABM Fabrication and Machining LLC			\$458.75
AFL Telecommunications LLC	227648	11/05/22	INSULATOR MOW TRANS-LITE 5/8 E/E CHAIN 15IN	\$583.05
	228027	11/17/22	CLAMP MOW BAND-POLE CLEVIS SINGLE IMPULSE	\$4,323.50
Total for Vendor:	AFL Telecommunications LLC			\$4,906.55

<u>PO Vendor Name</u>	<u>PO Number</u>	<u>PO Date</u>	<u>Description</u>	<u>PO Amount</u>
AIS Industrial & Construction Supply	227632	11/04/22	LUG TERMINAL #4 AWG LONG ARRESTOR GROUND CABLE GRAY MOW	\$276.50
	227694	11/08/22	LID BUCKET PAIL 3.5 GAL AND 5 GAL	\$287.04
	227696	11/08/22	Wheel Flap Mini 3/4 X 3/8 1/4IN Shank 80GRIT	\$413.00
	227795	11/10/22	PAINT SPRAY YELLOW ACRYLIC	\$410.40
	227995	11/15/22	VEST SAFETY LIME REFLECTIVE SILVER STRIPE W/POCKET	\$282.00
	228015	11/16/22	HOSE GARDEN 5/8 X 50FT	\$954.00
	228084	11/21/22	EAR MUFF OVER THE EAR HEARING PROTECTOR	\$1,688.10
	228113	11/22/22	CHEMICAL BRAKE CLEANER NON- CHLORINATED	\$10,196.60
	228128	11/22/22	Saw Hole Arbor Lenox Only	\$128.80
	228172	11/28/22	Weatherstrip Sponge 5/32 X 3/4 X 50FT	\$170.00
Total for Vendor: AIS Industrial & Construction Supply				\$14,806.44
AMGS Distributing LLC	227708	11/08/22	CHEMICAL LOCTITE SEALANT 518 GASKET ELIMINATOR	\$846.00
	227743	11/09/22	CHEMICAL COATING ANTI-SEIZE W/BRUSH TOP	\$279.00
	227988	11/15/22	GAUGE TIRE TREAD DEPTH	\$88.50
	228198	11/29/22	Chemical Adhesive Weatherstrip Black 3M	\$130.20
Total for Vendor: AMGS Distributing LLC				\$1,343.70

<u>PO Vendor Name</u>	<u>PO Number</u>	<u>PO Date</u>	<u>Description</u>	<u>PO Amount</u>
ARM CAMCO LLC	227661	11/05/22	KIT UR6 Horns Left and Right Connections Main Circuit Breaker SD160 LRV	\$155.92
Total for Vendor:	ARM CAMCO LLC			\$155.92
Ace Equipment & Supply Co.	227955	11/14/22	BRUSH WIRE INJECTOR PARTS CLEANING	\$273.00
	228309	11/29/22	Turbine Assy For SC28	\$3,600.00
Total for Vendor:	Ace Equipment & Supply Co.			\$3,873.00
Airgas Inc	227953	11/14/22	SOLDER ROSIN CORE 1/16 60/40 1LB	\$203.40
	228176	11/28/22	Gloves Nitrile Size 10	\$380.40
Total for Vendor:	Airgas Inc			\$583.80
Allied Electronics, Inc.	227631	11/04/22	Shrink Cold 3M 450-800 Kcmil 1KVA MOW LRV	\$1,245.80
	227670	11/06/22	CONTACT PIN AMP 20 GAGE PA MICROPHONE LRV	\$114.00
	227928	11/13/22	Tool Pin Remover Han D/R 15 LRV Harting	\$136.80
	228316	11/29/22	RELAY LRV DEN V-VII CAB BLOWER HEATER OPTO 22	\$2,975.00
Total for Vendor:	Allied Electronics, Inc.			\$4,471.60
American Datapath, Inc.	228179	11/28/22	US36 & Flatiron TVM Install	\$28,300.00
Total for Vendor:	American Datapath, Inc.			\$28,300.00

<u>PO Vendor Name</u>	<u>PO Number</u>	<u>PO Date</u>	<u>Description</u>	<u>PO Amount</u>
American Seating Company	228129	11/22/22	WASHER 3600 3700 BEARING SEAT .415IN ID X 1IN OD	\$271.00
Total for Vendor:	American Seating Company			\$271.00
Applied Adhesives	227593	11/02/22	CHEMICAL ROOF SEALANT SEAL BOND 100 WHITE	\$931.20
Total for Vendor:	Applied Adhesives			\$931.20
Applied Industrial Technologies Inc	227698	11/08/22	LUBRICANT GRAPHITE DRI SLIDE 5.25 OZ	\$1,011.60
Total for Vendor:	Applied Industrial Technologies Inc			\$1,011.60
Audiosears Corporation	227636	11/04/22	CRADLE ASSY VOICE RADIO HANDSET	\$1,876.00
Total for Vendor:	Audiosears Corporation			\$1,876.00
Auto-Motion-Shade	227778	11/09/22	SUNSHADE BLIND ROLLER DRIVER SIDE DEN V LRV	\$944.60
Total for Vendor:	Auto-Motion-Shade			\$944.60
B & K Supply, Inc.	228151	11/28/22	NOZZLE LINCOLN METER CONTROL	\$1,376.40
Total for Vendor:	B & K Supply, Inc.			\$1,376.40
B&H Photo-Video.Com	227691	11/08/22	CABLE KIT PALM MICROPHONE REPLACEMENT	\$3,971.00
Total for Vendor:	B&H Photo-Video.Com			\$3,971.00

<u>PO Vendor Name</u>	<u>PO Number</u>	<u>PO Date</u>	<u>Description</u>	<u>PO Amount</u>
BYD Coach & Bus LLC	227673	11/07/22	HOSE 1650 BRAKE FRONT 20"	\$382.68
	227753	11/09/22	WINDOW 1650 ASSY DRIVER DOOR PULL AND PUSH	\$1,573.44
	227974	11/15/22	VALVE 1650 BRAKE MANUAL	\$236.04
	228003	11/16/22	PLATE 1650 SEALING # 6	\$2,036.10
	228152	11/28/22	HEATER 1650 FLOOR PTC RADIATOR 1	\$2,432.43
	228200	11/29/22	FENDER 1650 FRONT REAR LH RH RUBBER MOLDING	\$1,090.56
Total for Vendor:	BYD Coach & Bus LLC			\$7,751.25
Batteries Plus LLC	227561	11/01/22	BATTERY LRV DEN I-VII TCU 3.6V, AA LITHIUM CELL WITH LEADS	\$450.00
	227697	11/08/22	Battery 9V Alkaline	\$630.00
	228101	11/21/22	BATTERY 5000 6000 8D SIDE THREADED STUD TERMINAL 1425 CCA	\$13,320.00
Total for Vendor:	Batteries Plus LLC			\$14,400.00
Brand Advantage Group	228146	11/26/22	Original Funding For Promotional Merchandise Program - Purchase Items For On-Line Store - Loice	\$7,555.00
Total for Vendor:	Brand Advantage Group			\$7,555.00
Calmo Inc	227940	11/14/22	SPRING 1650 CYLINDER ASSY W/C RAMP	\$4,069.00
Total for Vendor:	Calmo Inc			\$4,069.00
Cambridge Systematics Inc	228008	11/16/22	18FO001C WO #009 Equity Analysis & Assessments - Carl Green PM	\$64,809.00
Total for Vendor:	Cambridge Systematics Inc			\$64,809.00



RTD:PO - Purchase Order Monthly Activity Old

PO Creation Date - From Date: 11/01/2022 To Date: 11/30/2022

Run Date: 12/06/2022

Page 6 of 38

<u>PO Vendor Name</u>	<u>PO Number</u>	<u>PO Date</u>	<u>Description</u>	<u>PO Amount</u>
Camfil USA Inc	227658	11/05/22	FILTER LRV DEN VIII APS	\$900.00
Total for Vendor:	Camfil USA Inc			\$900.00
Carahsoft Technology Corporation	227629	11/03/22	OpenGov Solicitation and Contract Management SaaS	\$226,875.73
Total for Vendor:	Carahsoft Technology Corporation			\$226,875.73
Central Bag & Burlap Co.	228177	11/28/22	Wrap Bubble Packaging 6FT Tall	\$679.68
Total for Vendor:	Central Bag & Burlap Co.			\$679.68
Centurion Tool & Supply Co. Inc.	227792	11/10/22	BRUSH WIRE 4 OR 3 ROW	\$217.00
Total for Vendor:	Centurion Tool & Supply Co. Inc.			\$217.00
City of Lakewood	227685	11/07/22	422DO018 City of Lakewood Off Duty Police IGA Sept - Dec 2022	\$78,000.00
Total for Vendor:	City of Lakewood			\$78,000.00
Colorado Custom Rock Corp	227747	11/09/22	19DT001 Colorado Custom Rock - 16th St Mall Paver WO Contract - WO 63 Emergency Repairs	\$15,833.88
Total for Vendor:	Colorado Custom Rock Corp			\$15,833.88
Colorado Fire Services LLC	227699	11/08/22	BATTERY 1650 6300 6301-6415 9400 DRIVER PANEL FIRE SUPPRESSION	\$714.00
Total for Vendor:	Colorado Fire Services LLC			\$714.00

<u>PO Vendor Name</u>	<u>PO Number</u>	<u>PO Date</u>	<u>Description</u>	<u>PO Amount</u>
Colorado Petroleum	227760	11/09/22		\$1,650.00
	227934	11/14/22	FLUID ANTIFREEZE 100 PERCENT CONCENTRATE 55 GALLON	\$1,650.00
	227935	11/14/22	FLUID ANTIFREEZE 100 PERCENT CONCENTRATE 55 GALLON	\$1,650.00
Total for Vendor:	Colorado Petroleum			\$4,950.00
Component Specialties, Inc.	227559	11/01/22	BULB LED WHITE DASH LRV	\$2,505.00
	227660	11/05/22	BULB LED WHITE DASH LRV	\$1,670.00
Total for Vendor:	Component Specialties, Inc.			\$4,175.00
Conserve-A-Watt Lighting, Inc.	227931	11/13/22	LAMP FLOURESCENT COOLWHITE (CW) 4' LRV	\$336.00
Total for Vendor:	Conserve-A-Watt Lighting, Inc.			\$336.00
Cummins Inc	227619	11/03/22	MODULE 1800 6000 9300 DPF	\$14,232.24
	227700	11/08/22	CLAMP 5000 6000 6300 9300 V BAND 3.5IN ID	\$1,430.04
	227936	11/14/22	Cummins INSITE Licenses 25 Insite MR/HD Plus Lite 4 Insite MR/HD Plus Pro for 36 months	\$63,240.00
	228048	11/18/22	HARNESS 1500 ISX ECM	\$4,220.53
	228049	11/18/22	ACTUATOR 5260-5265 ISL TURBO VGT	\$1,118.31
Total for Vendor:	Cummins Inc			\$84,241.12

<u>PO Vendor Name</u>	<u>PO Number</u>	<u>PO Date</u>	<u>Description</u>	<u>PO Amount</u>
Custom Glass Solutions	227662	11/05/22	WINDSHIELD LRV GLASS DEN IV ONLY	\$1,266.10
Trumbaursville	228007	11/16/22	GLASS 6 MIN PASSENGER 1/4" 44% GREY TINT LAMINATED SD160 DEN VI LRV	\$27,200.00
Total for Vendor:	Custom Glass Solutions Trumbaursville			\$28,466.10
DC Group Inc	227594	11/02/22	122AT003 UPS Maintenance and Support 1/1/23 - 12/31/23 with 3 option years	\$5,800.00
Total for Vendor:	DC Group Inc			\$5,800.00
DemandTrans Solutions Inc	228064	11/18/22	2022 Licensing Fee DemandTrans Trip Planning & Scheduling App	\$15,000.00
Total for Vendor:	DemandTrans Solutions Inc			\$15,000.00
Denver Machine Shop, Inc	227592	11/02/22	TOOL - POLI SEGMENT BRAKE WEDGE FOR BRAKE SHOP	\$6,848.80
Total for Vendor:	Denver Machine Shop, Inc			\$6,848.80
Denver Reg. Council Of Governments	228013	11/16/22	Micromobility Data DRCOG	\$2,500.00
Total for Vendor:	Denver Reg. Council Of Governments			\$2,500.00
Digi-Key Corporation	227997	11/16/22	Inverter Triplite Dc/Ac LRV	\$274.16
Total for Vendor:	Digi-Key Corporation			\$274.16
Diversified Metal Fabricators Inc	227994	11/15/22	Parts For T359	\$3,743.49
Total for Vendor:	Diversified Metal Fabricators Inc			\$3,743.49

<u>PO Vendor Name</u>	<u>PO Number</u>	<u>PO Date</u>	<u>Description</u>	<u>PO Amount</u>
ECAD Inc	227605	11/02/22	AutoDesk Annual AutoCAD Renewal 2023	\$35,646.65
Total for Vendor:	ECAD Inc			\$35,646.65
Fastenal Company	227659	11/05/22	BRUSH CHIP 2 INCH FLAT SASH MOW LRV	\$241.44
	227999	11/16/22	SEALANT LRV DEN I-VII RTV BLACK DOOR SEALS	\$615.00
Total for Vendor:	Fastenal Company			\$856.44
Fiero Automation	227589	11/02/22	FITTING AIR HANSEN 1/4 NOMINAL 3/8 ID 11/16 OD HOSE D9	\$419.00
Total for Vendor:	Fiero Automation			\$419.00
FinishMaster, Inc.	227972	11/15/22	Paint Activator Primer Filler Imron Dupont	\$905.41
	228166	11/28/22	CUP RPS 0.9L PLUG IN SIEVE STANDARD PAINT GUN	\$586.56
Total for Vendor:	FinishMaster, Inc.			\$1,491.97
Fortna Equipment Company Inc.	227590	11/02/22	ABRASIVE SHOT STEELABRATOR 50LB	\$280.00
Total for Vendor:	Fortna Equipment Company Inc.			\$280.00
GFI Genfare	228069	11/18/22	Farebox spare parts	\$34,581.20
Total for Vendor:	GFI Genfare			\$34,581.20

<u>PO Vendor Name</u>	<u>PO Number</u>	<u>PO Date</u>	<u>Description</u>	<u>PO Amount</u>
Gillig LLC	227574	11/02/22	MOTOR 6300 6400 REAR EXIT DOOR CYLINDER ASSY	\$5,190.50
	227591	11/02/22	O-RING 5137-5265 6000 AC COMPRESSOR INTERNAL COMPONENTS	\$186.20
	227598	11/02/22	HEATER 5000 M80 COMPLETE	\$2,228.72
	227599	11/02/22	CABLE 1800 6000 9300 ECOLIFE TRANSMISSION	\$14,801.80
	227621	11/03/22	MOTOR 6000 WIPER ASSY C/S	\$6,197.25
	227637	11/04/22	CLAMP 6000 BAND SUPPORT BRACKET SCR HARNESS	\$4,149.96
	227638	11/04/22	CLAMP 6000 DPF OUTLET 5 IN	\$7,558.59
	227663	11/06/22	LIGHT MARKER AMBER LED 24V 18 SERIES DEN V LRV	\$908.80
	227675	11/07/22	CONNECTOR 5000 ELEC HEATER M80 KIT	\$3,111.18
	227676	11/07/22	FILTER 5000 6000 FRONT DOOR SILENCER	\$5,898.97
	227701	11/08/22	HOSE 1500 3600 6000 HEATER / DEFROSTER 2 INCH I.D. X 6 FT LENGTH	\$4,415.26
	227703	11/08/22	HOSE 6000 RADIATOR ELBOW 2.38 INCH W/ SPRING	\$8,632.38
	227734	11/08/22	CLAMP 6000 EXHAUST PIPE 2 1/4 IN	\$224.10
	227754	11/09/22	BELT W/CABLE1800 6000 9300 WHEEL CHAIR RESTRAINT	\$3,866.50
	227755	11/09/22	HOSE 6000 BRAKE #8 SAE PIPING FRONT	\$5,553.56
	227763	11/09/22	CONTROLLER 1500 3600 3700 PENDANT RICON LIFT	\$3,688.30
	227786	11/10/22	BEAM 5000 6000 6300 AXLE FRONT	\$5,678.38
	227790	11/10/22	BRACKET 6000 AIR DRYER	\$2,220.00
	227797	11/10/22	HARNESS 6000 REAR RUN	\$4,033.64
	227912	11/11/22	CUSHION ASSY 1500 1800 3600 5000 6000 9300 DRIVERS BOTTOM W/BLACK	\$11,179.76



RTD:PO - Purchase Order Monthly Activity Old

PO Creation Date - From Date: 11/01/2022 To Date: 11/30/2022

Run Date: 12/06/2022

Page 11 of 38

<u>PO Vendor Name</u>	<u>PO Number</u>	<u>PO Date</u>	<u>Description</u>	<u>PO Amount</u>
Gillig LLC			CLOTH FABRIC	
	227913	11/11/22	SEAT 1990 1500 3600 3700 DRIVERS COMPLETE WITH HEADREST	\$5,668.24
	227948	11/14/22	SIGN 1500 1800 6000 9300 FRONT SLAVE DISPLAY ASSY	\$2,650.99
	227958	11/14/22	FAN 5000 6000 DEFROSTER DRIVERS DASH	\$3,334.32
	227960	11/14/22	HEAD 6000 DEF W/12 SENDING UNIT	\$11,723.56
	227961	11/14/22	COMPRESSOR 5000 M80 REBUILD KIT	\$1,686.27
	227975	11/15/22	SWITCH 5000 6000 AIR PRESSURE 2 PSI	\$3,823.40
	227991	11/15/22	SWITCH 5000 6000 DIMMER DASH LIGHTS	\$3,561.90
	228006	11/16/22	CYLINDER 5000 6000 ASSY REAR DOOR OPERATOR	\$6,307.09
	228037	11/17/22	HEAD ASSY 9381-9398 SENDER DEF TANK	\$5,979.26
	228040	11/17/22	BRACKET 6000 SKIRT PANEL MTG W/ DOOR LOCK	\$6,398.24
	228076	11/21/22	HOSE 6000 ASSY A/C SUCTION #20	\$1,493.95
	228078	11/21/22	BREATHER 6000 TRANSMISSION ZF	\$2,065.76
	228085	11/21/22	LIGHT 5000 6000 TURN SIDE FORWARD OF WHEELWELL	\$10,063.92
	228086	11/21/22	CABLE 1800 9300 9400 DOOR ENCODER 42IN	\$310.12
	228114	11/22/22	VALVE 5000 DRIVERS HEATER	\$5,020.92
	228130	11/22/22	HOSE SILICONE 1/2 INCH	\$629.28
	228140	11/23/22	Chain 5000 Ramp Stow Deploy	\$6,539.05
	228153	11/28/22	TRANSDUCER 6000 6300 DISCHARGE HVAC SYSTEM	\$509.30
Total for Vendor: Gillig LLC				\$177,489.42



RTD:PO - Purchase Order Monthly Activity Old

PO Creation Date - From Date: 11/01/2022 To Date: 11/30/2022

Run Date: 12/06/2022

Page 12 of 38

<u>PO Vendor Name</u>	<u>PO Number</u>	<u>PO Date</u>	<u>Description</u>	<u>PO Amount</u>
Global Industrial	227693	11/08/22	BOX BIN 4W X 18D OPEN TOP	\$194.00
Total for Vendor:	Global Industrial			\$194.00
Gold Label Door Company	227624	11/03/22	Elati Station Door Replacement	\$92,060.00
Total for Vendor:	Gold Label Door Company			\$92,060.00
Graffiti Shield Inc	227932	11/13/22	FILM LRV DEN I-VIII ANTI-GRAFFITI 6 MIN WINDOW	\$2,370.00
Total for Vendor:	Graffiti Shield Inc			\$2,370.00

<u>PO Vendor Name</u>	<u>PO Number</u>	<u>PO Date</u>	<u>Description</u>	<u>PO Amount</u>
Grainger	227575	11/02/22	NOZZLE 1800 6000 9300 WIPER WASHER WET KIT	\$257.80
	227597	11/02/22	GLOVE CUT RESISTANT SMALL HEXARMOR HELIX BLUE	\$258.90
	227620	11/03/22	HYDROMETER BATTERY FLUID TESTER	\$152.60
	227653	11/05/22	COUPLER .25INCH FNPT COLORCONNECT GREEN	\$91.20
	227733	11/08/22	BOX BIN 2.25 WIDE X 17 LONG OPEN TOP	\$6,307.30
	227788	11/10/22	FOAM INSULATING SPRAY SEALANT 20 OZ CAN	\$441.12
	227937	11/14/22	Tool Valve Core LRV	\$171.50
	227984	11/15/22	Towel Scrub In A Bucket Hand Cleaner	\$1,652.40
	228000	11/16/22	ADHESIVE 3M EPOXY DP-190 FLOOR REPAIR LRV	\$352.92
	228002	11/16/22	Sanding Belt 6 X 48 60 Grit Powermatic	\$958.20
	228070	11/20/22	Paint LRV Yellow Upside Down Striping	\$119.88
	228102	11/21/22	COATING SPRAY ON SLIP RESISTANT YELLOW	\$494.40
	228108	11/21/22	Ride-On Parking Lot Sweeper	\$142,487.54
	228131	11/22/22	MASK RESPIRATOR CHEMICAL 3M	\$507.90
Total for Vendor: Grainger				\$154,253.66
Grimco Inc	227730	11/08/22	Foil Gerber Image Cal Clear Enamel 50 Yds	\$445.46
Total for Vendor: Grimco Inc				\$445.46

<u>PO Vendor Name</u>	<u>PO Number</u>	<u>PO Date</u>	<u>Description</u>	<u>PO Amount</u>
H2O Power Equipment	228014	11/16/22	CUDA PARTS WASH MACHINE	\$12,330.00
Total for Vendor:	H2O Power Equipment			\$12,330.00
HPM, Inc	228031	11/17/22	122DH014-H HPM Contracting On-Call Work Order Contract - WO 1 - Station Irrigation Winterizing	\$13,923.00
Total for Vendor:	HPM, Inc			\$13,923.00
Hanning & Kahl LP	227793	11/10/22	PLATE FRONT BOX TWC CONTROL LRV DEN V-VIII	\$9,880.00
	227930	11/13/22	TWC TRANSPONDER 8A83 LRV	\$39,657.00
Total for Vendor:	Hanning & Kahl LP			\$49,537.00
Hi-Tec Enterprises	227668	11/06/22	WIRE GUIDE CABLE TRACK BRAKE LRV	\$3,305.00
	228072	11/20/22	PAD BRAKE SD160 TECTRAN DEN V LRV	\$21,500.00
Total for Vendor:	Hi-Tec Enterprises			\$24,805.00
IFM Efector Inc.	227649	11/05/22	Sensor Proximity WCH-72 EFECTOR-100 MOW LRV	\$279.00
Total for Vendor:	IFM Efector Inc.			\$279.00
INIT Innovations in Transportation	227613	11/03/22	CABLE ASSY PID TO WAGO	\$187.20
	227639	11/04/22	SENSOR IRMA MATRIX FLUSH MOUNT W/ 4 STUDS	\$3,100.00
	227704	11/08/22	SWITCH WITH CABLE HARNESS RIGHT ANGLE EMERGENCY ALARM	\$3,588.00
Total for Vendor:	INIT Innovations in Transportation			\$6,875.20



RTD:PO - Purchase Order Monthly Activity Old

PO Creation Date - From Date: 11/01/2022 To Date: 11/30/2022

Run Date: 12/06/2022

Page 15 of 38

<u>PO Vendor Name</u>	<u>PO Number</u>	<u>PO Date</u>	<u>Description</u>	<u>PO Amount</u>
Image Projection	228125	11/22/22	Installation of Directional Projection Signs At Two Locations At The Denver Union Station, Chestnut And Wewatta Pavilions	\$10,447.15
Total for Vendor:	Image Projection			\$10,447.15
Innovative Coating Technologies	228050	11/18/22	PAINT RUST GRIP 1000 QUART	\$352.00
Total for Vendor:	Innovative Coating Technologies			\$352.00
J & J Supply Co	227914	11/11/22	WHEEL CUTOFF STEEL 10 X 1/16 X 5/8- 11 SLASHER	\$948.50
Total for Vendor:	J & J Supply Co			\$948.50
J.T. Ryerson & Son Inc.	227787	11/10/22	Stock Steel Black Sheet 48 X 48 X .250 (1/4)	\$1,600.00
	228030	11/17/22	ALUMINUM SHEET .0125 X 36IN X 96IN	\$3,092.60
Total for Vendor:	J.T. Ryerson & Son Inc.			\$4,692.60
Jamaica Bearings Co Inc	228187	11/29/22	BEARING AXLE FAG TAROL 90 LRV	\$20,250.00
Total for Vendor:	Jamaica Bearings Co Inc			\$20,250.00
Janek Corporation	228189	11/29/22	BUMPER 5000 6000 REAR MODULE LH	\$540.00
Total for Vendor:	Janek Corporation			\$540.00
Kahn Construction Corporation	227748	11/09/22	122DH014-KA Kahn Construction Work Order Contract - WO 1 - 711 Cabinets	\$6,141.00
Total for Vendor:	Kahn Construction Corporation			\$6,141.00

<u>PO Vendor Name</u>	<u>PO Number</u>	<u>PO Date</u>	<u>Description</u>	<u>PO Amount</u>
Kaplan Kirsch and Rockwell LLP	228020	11/16/22	RFP Legal Services TOD	\$96,000.00
Total for Vendor:	Kaplan Kirsch and Rockwell LLP			\$96,000.00
Kimball Electronics Inc	227927	11/13/22	Sleeve Oval Aluminum 3/8 - 5/32 Wall MOW LRV	\$95.00
	228071	11/20/22	BUMPER CONICAL RECESSED 15/16-IN X 5/8-IN RUBBER DRIVER'S CAB WALL SD160 LRV	\$141.08
Total for Vendor:	Kimball Electronics Inc			\$236.08
Kirk's Automotive, Inc.	227705	11/08/22	KIT BOLT 1800 5261-5265 6000 9300 HARDWARE FRONT EXCITER	\$550.00
Total for Vendor:	Kirk's Automotive, Inc.			\$550.00
Kubat Equipment & Service Co. Inc	227677	11/07/22	SEAL KIT HOIST ROTARY LIFT 10-5/8 INCH	\$410.64
	228174	11/28/22	Core Rotary Hoist Valve	\$345.81
Total for Vendor:	Kubat Equipment & Service Co. Inc			\$756.45
L & N Supply Company	227560	11/01/22	ABSORBANT FLOOR SWEEP	\$503.20
	227610	11/03/22	BROOM ANGLER PLASTIC	\$436.32
	227702	11/08/22	DISINFECTANT SPRAY CHASE SPRAY-PAK BRAND	\$2,954.16
	227746	11/09/22	Duster Lambswool Wand 24IN Washable	\$3,689.88
	227976	11/15/22	CHEMICAL CLEANER CARPET STAIN REMOVER 3M	\$449.88
	228028	11/17/22	BRUSH DECK PLASTIC BRISTLE 12IN	\$226.56
Total for Vendor:	L & N Supply Company			\$8,260.00

<u>PO Vendor Name</u>	<u>PO Number</u>	<u>PO Date</u>	<u>Description</u>	<u>PO Amount</u>
L.B. Foster Rail	227774	11/09/22	STICK LUBE FLANGE LRV	\$24,630.00
Technologies Corp	228310	11/29/22	STICK LUBE TREAD LRV	\$41,960.00
Total for Vendor:	L.B. Foster Rail Technologies Corp			\$66,590.00
Lawson Products Inc	228087	11/21/22	WHEEL CUTOFF STEEL 4 X 1/32 X 3/8 RAZOR	\$725.00
Total for Vendor:	Lawson Products Inc			\$725.00
Lewis Bolt & Nut Company	227651	11/05/22	WASHER LOCK MOW 1" PLAIN 3/8 SQUARE	\$742.26
	227773	11/09/22	BOLT FROG MOW 1-3/8X15 GRADE 8	\$169.40
Total for Vendor:	Lewis Bolt & Nut Company			\$911.66
Lumin-Air LLC	227622	11/03/22	FILTER ASSY 6000 MERV-13 EVAPORATOR	\$14,240.00
Total for Vendor:	Lumin-Air LLC			\$14,240.00
MAC Products	228313	11/29/22	Contact Wire Dead End Shoe MOW LRV	\$3,165.84
Total for Vendor:	MAC Products			\$3,165.84

<u>PO Vendor Name</u>	<u>PO Number</u>	<u>PO Date</u>	<u>Description</u>	<u>PO Amount</u>
MHC Kenworth - Denver	227579	11/02/22	TUBE 1800 9300 9400 DPF INLET PRESSURE	\$1,099.40
	227712	11/08/22	TURBOCHARGER 6000 ISL	\$31,931.20
	227713	11/08/22	ACTUATOR 1800 6000 9300 9400 ISL TURBO KIT VGT	\$23,586.40
	227757	11/09/22	TIE ROD 1500 1990 3600 TAG AXLE RH	\$316.96
	227916	11/11/22	HOUSING 1500 3600 3700 ISX FRONT GEAR	\$3,351.05
	227950	11/14/22	SHOCK ABSORBER 1500 1990 3600 3700 FRONT SEE MB 14-01-82	\$8,047.32
	227962	11/14/22	STARTER 1500 3600 3700 ISX 24V MITSUBISHI	\$3,962.74
	227978	11/15/22	SENSOR 1500 1800 1990 3600 5260-65 6000 9300 ISB ISX ISM ISL PRESSURE CRANKCASE	\$1,113.80
	227992	11/15/22	GASKET 1500 1990 3600 3700 B500 TRANSMISSION PAN	\$1,422.12
	228055	11/18/22	MODULE 1500 1990 TRANSMISSION CONTROL	\$3,447.97
	228057	11/18/22	SENSOR 1500 1800 3600 3700 5260 6000 9300 ISL ISX TEMP PRESSURE INTAKE MANIFOLD	\$1,378.00
	228058	11/18/22	PUMP FUEL 1500 3600 3700 GEAR DRIVEN ISX	\$2,988.76
	228089	11/21/22	PUMP FUEL 1500 ISX COMPLETE	\$11,454.75
	228133	11/22/22	BREATHER 1800 5260-5265 6000 9300 ISL VALVE COVER HOUSING	\$10,187.15
	228134	11/22/22	COOLER 1500 3600 ISX EGR	\$9,872.95
	228155	11/28/22	VALVE 1800 6000 9300 ISL EGR COOLER	\$19,810.20
	228156	11/28/22	TURBOCHARGER 3600 3700 ISB ISX KIT	\$18,413.64
	228157	11/28/22	ACTUATOR 1500 3600 3700 ISX TURBO	\$14,415.60

<u>PO Vendor Name</u>	<u>PO Number</u>	<u>PO Date</u>	<u>Description</u>	<u>PO Amount</u>
MHC Kenworth - Denver			ELECTRIC	
	228158	11/28/22	ACTUATOR 5260-5265 ISL TURBO VGT	\$1,064.72
	228164	11/28/22	TUBE 6000 MUFFLER DPF EXHAUST	\$6,283.02
			FORMED	
	228194	11/29/22	SEAL KIT 1500 1990 3600 3700 B500	\$1,781.25
			TRANSMISSION	
Total for Vendor:	MHC Kenworth - Denver			\$175,929.00
MSC Industrial Supply	227558	11/01/22	Box Bin 6W X 18D	\$690.08
Co. Inc.	227650	11/05/22	AIR CONDITIONER LRV SCADA	\$2,779.18
			COMMUNICATION HOUSE 14,200/14,500	
			BTU H COOLING/HEATING 10.4/10.4 EER	
	227745	11/09/22	GUN BLOW AIR 30 PSI	\$333.72
	227785	11/10/22	VALVE 1990 3600 3700 SOLENOID FRONT	\$570.40
			ENTRANCE DOOR	
	227968	11/14/22	CHEMICAL CLEANER KRUD KUTTER 32OZ	\$591.60
			SPRAY BOTTLE	
	227983	11/15/22	FUEL MAP GAS TORCH 14.1 OZ CYLINDER	\$286.08
	228117	11/22/22	Wheel Flap 2IN 1/4IN Shank 60GRIT	\$534.50
	228167	11/28/22	Chemical Loctite Adhesive 290	\$341.52
			Threadlocker Green	
Total for Vendor:	MSC Industrial Supply Co. Inc.			\$6,127.08
Mallory Safety & Supply LLC	228190	11/29/22	GLOVES NITRILE POWDER FREE 5 MIL	\$7,134.00
			DISPOSABLE MEDIUM	
Total for Vendor:	Mallory Safety & Supply LLC			\$7,134.00

<u>PO Vendor Name</u>	<u>PO Number</u>	<u>PO Date</u>	<u>Description</u>	<u>PO Amount</u>
Marini Diesel Inc	227576	11/02/22	WASHER 1500 3600 3700 6000 9300 ISX SEALING EGR	\$4,995.30
	227577	11/02/22	TURBOCHARGER 3600 3700 ISB ISX KIT	\$23,877.76
	227578	11/02/22	TURBOCHARGER 1500	\$22,081.24
	227623	11/03/22	SPOOL 1500 ISX ENGINE BRAKE CONTROL VALVE	\$3,397.84
	227625	11/03/22	SENSOR 1500 1800 3600 3700 6000 6300 9300 9400 ISX ISL DIFFERENTIAL PRESSURE DPF	\$5,953.84
	227640	11/04/22	GASKET 1800 6000 9300 9400 ISL TURBOCHARGER	\$563.40
	227641	11/04/22	MODULE 1800 6001-6299 9300 ISL ENGINE ELECTRONIC CONTROL	\$6,668.88
	227674	11/07/22	INJECTOR 3600 3700 FUEL SUPPLY TUBE	\$203.10
	227707	11/08/22	WASHER 1500 6000 SEALING	\$1,426.77
	227709	11/08/22	COOLER 6000 9300 9400 KIT EGR	\$12,627.96
	227710	11/08/22	SENSOR 1500 1800 3600 3700 5260- 5265 6000 9300 9400 ISL ISX POSITION CRANKSHAFT	\$536.70
	227756	11/09/22	AIR BAG 6000 REAR SEE MB 14-01-82	\$8,953.80
	227915	11/11/22	BELT 1800 9300 WATER PUMP DRIVE	\$3,301.59
	227949	11/14/22	O-RING 5000 6000 ISM ISL TURBOCHARGER	\$2,638.42
	227977	11/15/22	TURBOCHARGER 3600 3700 ISB ISX KIT	\$13,646.46
	227993	11/15/22	MANIFOLD 1500 3600 3700 ISX EXHAUST SMALL	\$2,382.68
	228005	11/16/22	MANIFOLD 1800 9300 9400 EXHAUST	\$3,442.06
	228034	11/17/22	TOOL CONNECTOR REMOVING	\$354.40
	228051	11/18/22	INJECTOR 5000 ISM FUEL	\$873.96
	228052	11/18/22	VALVE 5000 AD9 AIR DRYER PURGE HOUSING	\$378.40

<u>PO Vendor Name</u>	<u>PO Number</u>	<u>PO Date</u>	<u>Description</u>	<u>PO Amount</u>
Marini Diesel Inc	228053	11/18/22	GASKET 1800 6000 9300 9400 ISL ROCKER LEVER HOUSING	\$1,842.43
	228054	11/18/22	DAMPER 1500 1990 3600 3700 STEERING SUSPENSION	\$1,942.68
	228088	11/21/22	ACTUATOR 1500 3600 3700 ETR FUEL CONTROL	\$1,191.68
	228115	11/22/22	SENSOR 1800 6000 9300 ISL NITROGEN OXIDE INLET	\$24,685.20
	228116	11/22/22	SEAL 1500 3600 3700 ISX CARRIER EXHAUST TUBE	\$886.10
	228132	11/22/22	GASKET 1990 5000 ISM EXHAUST MANIFOLD	\$302.88
	228154	11/28/22	TUBE 1800 5260-5265 6000 9300 BREATHING ISL	\$1,276.24
	228191	11/29/22	O-RING 1500 1990 3600 ENGINE SEAL	\$491.78
	228192	11/29/22	BRAKE CALIPER 6000 FRONT CS AND REAR SS	\$6,727.95
	228193	11/29/22	BRAKE CALIPER 6000 FRONT SS AND REAR CS	\$6,727.95
Total for Vendor: Marini Diesel Inc				<hr/> \$164,379.45

<u>PO Vendor Name</u>	<u>PO Number</u>	<u>PO Date</u>	<u>Description</u>	<u>PO Amount</u>
Mohawk Mfg. & Supply Co.	227580	11/02/22	AIR BAG 1800 9300 9400 AIR SPRING ALL AXLES SEE MB 14-01-82	\$5,930.68
	227642	11/04/22	KNOB 1800 9300 DRIVER CONTROLS	\$292.48
	227678	11/07/22	ROD SUSP 5000 6000 TORQUE LOWER REAR	\$7,395.20
	227679	11/07/22	BEARING WHEEL 3600 3700 5000 6000 FRONT OUTER CONE	\$1,116.32
	227758	11/09/22	LATCH 1800 9300 QUARTER TURN ACCESS DOORS	\$266.80
	227782	11/10/22	CLAMP 6000 4" V-BAND ENGINE EXHAUST	\$170.40
	227917	11/11/22	NUT 1800 9300 SLOTTED M100 X 1.5 REAR AXLE BRAKE	\$615.96
	228059	11/18/22	SENSOR 1800 9300 REAR ABS RH CURBSIDE BLACK CONNECTOR	\$937.72
	228090	11/21/22	SNAP RING 5000 S-CAM	\$2,180.81
	228165	11/28/22	BRAKE PADS 1500 1990 3600 3700 6000 ALL AXLES MA703 KIT	\$13,883.40
	228199	11/29/22	TIE ROD 5000 6000 TUBE W / ENDS STEERING KNUCKLE	\$784.36
Total for Vendor:	Mohawk Mfg. & Supply Co.			\$33,574.13
Motion Industries, Inc.	227581	11/02/22	FITTING 1500 6000 FUEL COUPLING QUICK DISCONNECT/LIFT	\$165.84
Total for Vendor:	Motion Industries, Inc.			\$165.84
Motion Sensors Inc	227987	11/15/22	HARNESS SENSOR MOTOR SPEED AXLE 2&5 SD160 DEN V LRV	\$2,514.70
Total for Vendor:	Motion Sensors Inc			\$2,514.70

<u>PO Vendor Name</u>	<u>PO Number</u>	<u>PO Date</u>	<u>Description</u>	<u>PO Amount</u>
Mouser Electronics, Inc.	227556	11/01/22	CONNECTOR 1650 PIN AND SOCKET SENSITIVE EDGE HARNESS	\$19.75
	227951	11/14/22	SWITCH 5000 6000 SPEAKER SELECTOR 6 POL 3 POS ON/ON/ON	\$670.80
Total for Vendor:	Mouser Electronics, Inc.			\$690.55
Muncie Transit Supply	227582	11/02/22	BRAKE ROTOR 6000 FRONT AND REAR	\$11,271.20
	227588	11/02/22	HOSE SILICONE 2-1/2 X 36 IN	\$757.80
	227643	11/04/22	CAP 1500 1800 3600 3700 6000 9300 DEF FILLER NECK	\$1,170.28
	227680	11/07/22	BUMPER 1650 REAR MODULE RH	\$2,824.25
	227759	11/09/22	BRAKE PAD 1800 9300 CENTER AXLE KIT	\$2,262.40
	227918	11/11/22	ARM 6000 WIPER	\$4,075.00
	227963	11/14/22	RELAY 6000 24V 20 AMP	\$4,119.69
	227979	11/15/22	SWITCH 5000 6000 DIMMER W/HARNESS	\$306.00
	228060	11/18/22	REGULATOR 6000 VOLTAGE 24VDC	\$1,712.16
	228091	11/21/22	VALVE 5260-5265 6000 HEATER SOLENOID 24V INTERNAL	\$1,626.00
	228118	11/22/22	NOZZLE DEF FLUID	\$6,405.42
	228168	11/28/22	BRAKE CHAMBER 1500 1990 3600 3700 TAG LH	\$423.30
Total for Vendor:	Muncie Transit Supply			\$36,953.50
NAPA Auto Parts	227735	11/08/22	CLEANER ENGINE BRITE GUNK EB1CA 16 OZ CAN	\$4,950.00
Total for Vendor:	NAPA Auto Parts			\$4,950.00



RTD:PO - Purchase Order Monthly Activity Old

PO Creation Date - From Date: 11/01/2022 To Date: 11/30/2022

Run Date: 12/06/2022

Page 24 of 38

<u>PO Vendor Name</u>	<u>PO Number</u>	<u>PO Date</u>	<u>Description</u>	<u>PO Amount</u>
National Coatings & Supplies Inc	227768	11/09/22	Paint Thinner Lacquer 5GAL Dupont	\$419.47
	228010	11/16/22	PAINT CLEAR COAT ELITE GALLON	\$1,267.00
Total for Vendor:	National Coatings & Supplies Inc			\$1,686.47
National Oak Distributors Inc	227681	11/07/22	DISC ROLOC SURFACE CONDITIONING 3 IN MEDIUM 3M	\$2,996.72
	227954	11/14/22	SEALER PANEL BONDING ADHESIVE DMS 450 ML	\$609.48
	227980	11/15/22	Paint Putty Evercoat	\$577.80
	228011	11/16/22	Sandpaper Emery 320 Grit 1 Wide 3M	\$530.16
	228092	11/21/22	SANDPAPER STIKIT GOLD SHEET ROLL 2 3/4 IN X 45 YD	\$490.62
	228119	11/22/22	SEALER PANEL BONDING ADHESIVE DMS 450 ML	\$609.48
	228135	11/22/22	PAINT FILLER BODY DURAGLAS	\$266.64
	228320	11/29/22	PAINT SPRAY ZERO RUST AEROSOL BLACK LRV	\$723.12
Total for Vendor:	National Oak Distributors Inc			\$6,804.02

<u>PO Vendor Name</u>	<u>PO Number</u>	<u>PO Date</u>	<u>Description</u>	<u>PO Amount</u>
Neopart Transit LLC	227583	11/02/22	NONSKID 6000 LIFT TRIM ASSY REAR	\$1,240.26
	227601	11/02/22	CHAMBER 1500 1990 3600 6000 BRAKE REAR AXLE	\$13,429.00
	227682	11/07/22	BOLT 5000 6000 M16 X 2 FRONT AND REAR AXLE HUB AND ROTOR	\$7,599.00
	227919	11/11/22	KIT 6000 ADJUSTING NUTS AND WASHERS HUB AND ROTOR FRONT	\$296.28
	228093	11/21/22	BRAKE CALIPER 1800 9300 CURBSIDE RH FRONT	\$3,426.50
	228120	11/22/22	BATTERY 1650 6300 6301-6415 9400 DRIVER PANEL FIRE SUPPRESSION	\$6,241.39
Total for Vendor:	Neopart Transit LLC			\$32,232.43
New Pig Corporation	227728	11/08/22	ABSORBANT MAT GREY 15 X 20 COOLANT/OIL	\$5,184.00
Total for Vendor:	New Pig Corporation			\$5,184.00
PEI Genesis Inc	227775	11/09/22	PIN DEN V-VII CONTACT VEAM SIZE 8 12-14 AWG	\$6,367.00
Total for Vendor:	PEI Genesis Inc			\$6,367.00
PSI Repair Services, Inc.	227706	11/08/22	INVERTER LRV DEN I-III HVAC SMA	\$3,500.00
	227711	11/08/22	INVERTER LRV DEN I-III HVAC SMA	\$4,470.00
	227732	11/08/22	INVERTER LRV DEN IV & CASE TK A0448700 INVERTER HVAC	\$3,500.00
Total for Vendor:	PSI Repair Services, Inc.			\$11,470.00



RTD:PO - Purchase Order Monthly Activity Old

PO Creation Date - From Date: 11/01/2022 To Date: 11/30/2022

Run Date: 12/06/2022

Page 26 of 38

<u>PO Vendor Name</u>	<u>PO Number</u>	<u>PO Date</u>	<u>Description</u>	<u>PO Amount</u>
Parts Express	227665	11/06/22	SPEAKER 4 INCH VISATON 8-OHM SD160 LRV CAB	\$256.40
Total for Vendor:	Parts Express			\$256.40
Power Product Technologies, Inc.	228009	11/16/22	HOSE SHOP AIR 250 - 300 PSI RED 3/8 IN GOODYEAR HORIZON	\$600.00
Total for Vendor:	Power Product Technologies, Inc.			\$600.00
Powertech Converter Corp	228029	11/17/22	CONVERTER LRV AUX APS 66KVA 12KW DEN V	\$13,532.61
Total for Vendor:	Powertech Converter Corp			\$13,532.61
Prevost Car (US) Inc.	227683	11/07/22	VALVE AIR 1500 2000 3600 3700 5000 TANK DRAIN 1/4 NPT	\$185.40
Total for Vendor:	Prevost Car (US) Inc.			\$185.40
Professional Plastics, Inc.	227667	11/06/22	BLOCK SLIDING RIGHT TRACK BRAKE LRV	\$839.40
	227781	11/10/22	GRAFFITI GUARD 6000 LH/RH #3-4 #6- 11 #13-14 UPPER 46IN TRANSOM	\$312.18
Total for Vendor:	Professional Plastics, Inc.			\$1,151.58
Quality Minerals LLC	228173	11/28/22	CHEMICAL MAG CHLORIDE GRANULAR ICE MELT 50 LB BAG	\$12,197.50
Total for Vendor:	Quality Minerals LLC			\$12,197.50
R.F.S., Inc.	227967	11/14/22	CASTER RIGID 6 IN LRV	\$402.90
Total for Vendor:	R.F.S., Inc.			\$402.90

<u>PO Vendor Name</u>	<u>PO Number</u>	<u>PO Date</u>	<u>Description</u>	<u>PO Amount</u>
R.S. Hughes Company, Inc.	227664	11/06/22	NOZZLE GUN 3M EPX PLUS II 50ML FLOOR REPAIR LRV	\$183.33
	227684	11/07/22	BELT SANDING 36 GRIT 3/8 X 13IN	\$1,467.00
	228035	11/17/22	Chemical Loctite Adhesive 262 Red High Strength	\$193.95
	228094	11/21/22	GLOVES NITRILE POWDER FREE 5 MIL DISPOSABLE LARGE	\$9,600.00
	228121	11/22/22	BELT SANDING 60 GRIT 3/8 X 13IN	\$232.00
	228169	11/28/22	GLOVES NITRILE POWDER FREE 5 MIL DISPOSABLE EXTRA LARGE	\$9,600.00
Total for Vendor:	R.S. Hughes Company, Inc.			\$21,276.28
RUD-Chain Inc	227584	11/02/22	CHAIN WHEEL 1500 3600 3700 RUD SNOWCHAIN 6 STRAND	\$1,006.32
	228095	11/21/22	CHAIN WHEEL 1500 3600 3700 RUD SNOWCHAIN 6 STRAND	\$1,509.48
Total for Vendor:	RUD-Chain Inc			\$2,515.80
Railroad Tools and Solutions LLC	228068	11/18/22	Purchase of Height and Stagger Gage	\$7,925.71
Total for Vendor:	Railroad Tools and Solutions LLC			\$7,925.71
Rexel USA Inc	227652	11/05/22	LIGHT MOW STROBE AMBER CROSSING GATE	\$952.97
	227789	11/10/22	PLUG MALE 15A 125V 3 WIRE	\$142.20
Total for Vendor:	Rexel USA Inc			\$1,095.17

<u>PO Vendor Name</u>	<u>PO Number</u>	<u>PO Date</u>	<u>Description</u>	<u>PO Amount</u>
Ricon Corporation	227964	11/14/22	KIT 1500 STOW PROGRAMMING SWITCH	\$907.30
Total for Vendor:	Ricon Corporation			\$907.30
Safety & Construction Supply	227986	11/15/22	TRIANGLE WARNING REFLECTOR KIT	\$512.00
Total for Vendor:	Safety & Construction Supply			\$512.00
Sam Hill Oil, Inc.	227966	11/14/22	LUBRICANT HOIST HYDRAULIC PREMIUM ISO 32 55 GAL DRUM	\$5,971.12
Total for Vendor:	Sam Hill Oil, Inc.			\$5,971.12
Sanity Solutions, Inc.	227925	11/12/22	SpectraLogic Support Annual Renewal 10/19/22 - 10/18/23	\$13,288.12
Total for Vendor:	Sanity Solutions, Inc.			\$13,288.12
Schroeder Fence Co	227791	11/10/22	Install 400 feet of Chain link fence at Federal Decatur Station to protect the landscaping and to prevent a slip and fall accident.	\$14,300.00
	228145	11/23/22	Install fence under Train bridge at 58th and Ralston road in Arvada	\$2,150.00
Total for Vendor:	Schroeder Fence Co			\$16,450.00
Schunk Carbon Technology LLC	228317	11/29/22	STUD ADJUSTING PANTOGRAPH LRV	\$30,036.35
Total for Vendor:	Schunk Carbon Technology LLC			\$30,036.35

<u>PO Vendor Name</u>	<u>PO Number</u>	<u>PO Date</u>	<u>Description</u>	<u>PO Amount</u>
Selective Transit Parts	227729	11/08/22	GASKET 1800 6000 9300 PAN ZF TRANSMISSION48	\$2,317.95
	227981	11/15/22	BRACKET 6000 9300 ZF TRANSMISSION OIL COOLER	\$700.00
	228061	11/18/22	ACCUMULATOR ASSY 6000 9300 ZF TRANSMISSION	\$1,432.00
	228096	11/21/22	SENSOR 6000 ZF TRANSMISSION HEAT OIL TUBE	\$238.20
	228195	11/29/22	KIT 1800 6000 9300 REPAIR ZF TRANSMISSION	\$3,520.00
Total for Vendor:	Selective Transit Parts			\$8,208.15
Senergy Petroleum LLC	227767	11/09/22	LUBRICANT ENGINE OIL 10W-30 55 GAL DRUM	\$799.83
Total for Vendor:	Senergy Petroleum LLC			\$799.83
Seon Design (USA) Corp.	227910	11/10/22	CAMERA SEON WEDGE 720P 1080P 3MP 3.6MM EXTERNAL	\$4,800.00
Total for Vendor:	Seon Design (USA) Corp.			\$4,800.00
Siemens Mobility Inc	227606	11/03/22	MODULE LRV DEN V-VII IGBT PHASE POWER BRAKE	\$137,940.00
	227616	11/03/22	PROCESSOR CR MOW IPITC INTELLIGENT PROCESSOR IS TRACK CIRCUIT	\$16,225.00
	228077	11/21/22	HINGE CAB WINDOW LRV	\$4,720.00
	228079	11/21/22	PROCESSOR CR MOW IPITC INTELLIGENT PROCESSOR IS TRACK CIRCUIT	\$16,225.00
Total for Vendor:	Siemens Mobility Inc			\$175,110.00

<u>PO Vendor Name</u>	<u>PO Number</u>	<u>PO Date</u>	<u>Description</u>	<u>PO Amount</u>
SmartDrive Systems, Inc	227783	11/10/22	BRACKET MOUNTING CAMERA SECONDARY	\$397.50
Total for Vendor:	SmartDrive Systems, Inc			\$397.50
Southwest Solutions Group Inc	228110	11/22/22	CPU for VLM-3 Unit & instillation by Southwest Solutions Group	\$8,480.77
Total for Vendor:	Southwest Solutions Group Inc			\$8,480.77
Spacecraft Components Corporation	228105	11/21/22	PLUG STRAIGHT W/CABLE CLAMP SZ 36A 1P GROUND BRUSH HARNESS UNPOWERED TRUCK HSGNA SD160 LRV	\$207.40
Total for Vendor:	Spacecraft Components Corporation			\$207.40
Specialty Incentives, Inc	227920	11/11/22	FORM ROADCALL 4X6 INCH POST-IT	\$875.00
Total for Vendor:	Specialty Incentives, Inc			\$875.00
Sportworks Northwest, Inc.	227644	11/04/22	BUMPER 1500 6000 9300 3600 STOP BIKE RACK	\$2,680.00
	227761	11/09/22	BIKE RACK QUADRANT DL2	\$1,950.00
	228062	11/18/22	BIKE RACK PIVOT PLATE	\$1,140.00
Total for Vendor:	Sportworks Northwest, Inc.			\$5,770.00
Square Inc	227779	11/09/22	2022-2023 Square POS Subscription Renewal	\$31,200.00
Total for Vendor:	Square Inc			\$31,200.00
Stewart & Stevenson LLC	228065	11/18/22	SHAFT 1500 3600 3700 B500 TRANSMISSION MAIN	\$1,090.37
Total for Vendor:	Stewart & Stevenson LLC			\$1,090.37



RTD:PO - Purchase Order Monthly Activity Old

PO Creation Date - From Date: 11/01/2022 To Date: 11/30/2022

Run Date: 12/06/2022

Page 31 of 38

<u>PO Vendor Name</u>	<u>PO Number</u>	<u>PO Date</u>	<u>Description</u>	<u>PO Amount</u>
Super-Tech Filter	227615	11/03/22	Filter HVAC 24 X 24 X 1 PREPLEAT Flander Precision Air	\$342.00
Total for Vendor:	Super-Tech Filter			\$342.00
Team Petroleum, LLC	227971	11/15/22	LUBRICANT DELVAC 75W-90 SYNTHETIC GEAR	\$2,530.35
	227982	11/15/22	OIL 5W30 FULL SYNTHETIC 55 GALLON DRUM	\$3,160.44
Total for Vendor:	Team Petroleum, LLC			\$5,690.79
Testforce USA Inc	227657	11/05/22	PANEL LRV DEN I-IV VOD DATA SYSTEM 6 INCH	\$13,302.00
Total for Vendor:	Testforce USA Inc			\$13,302.00

<u>PO Vendor Name</u>	<u>PO Number</u>	<u>PO Date</u>	<u>Description</u>	<u>PO Amount</u>
The AfterMarket Parts Company	227557	11/01/22	BRACKET 1500 3600 3700 PUMP COOLANT RECOVERY	\$290.92
	227573	11/02/22	CLAMP 1500 3600 3700 SUSPENSION TAG AIR HOSE	\$1,045.83
	227595	11/02/22	PLATE 1800 9300 9400 BASE WELDED EXIT DOOR	\$6,911.82
	227596	11/02/22	SASH 1500 1990 3600 FRAMELESS STANDARD	\$1,529.35
	227618	11/03/22	AIR BAG 1500 3600 3700 TAG SEE MB 14-01-82	\$4,578.89
	227633	11/04/22	DUCT 1990 3600 3700 RETURN AIR	\$1,470.76
	227634	11/04/22	HUB 1800 9300 9400 ASSEMBLY CENTER AXLE	\$12,254.54
	227635	11/04/22	BUMPER 1800 9300 CORNER FRONT LH	\$2,030.55
	227647	11/04/22	ROD 1500 1990 3600 END AND TIE ASSY TAG AXLE	\$3,605.40
	227671	11/07/22	PLATE SUSP 1500 1990 3600 3700 PIN LOCKING MOUNT/TIE ROD	\$2,413.74
	227672	11/07/22	BOLT 1500 1990 LICENSE PLATE MOUNT	\$3,895.39
	227752	11/09/22	PEDAL 1500 3600 3700 ISX ACCELERATOR	\$4,854.68
	227765	11/09/22	COCK 1650 AIR ASSY DRIVER DOOR SWITCHLESS	\$1,540.55
	227766	11/09/22	WINDSHIELD 1500 1990 3600 3700 LH STREETSIDE	\$3,471.46
	227769	11/09/22	WINDSHIELD 1500 1990 3600 3700 LH STREETSIDE	\$3,471.46
	227784	11/10/22	CLAMP 1500 1990 3600 3700 SUSPENSION TAG AXLE	\$668.07
	227794	11/10/22	FITTING 1500 TUBE STRAIGHT SAE MALE	\$2,775.26

<u>PO Vendor Name</u>	<u>PO Number</u>	<u>PO Date</u>	<u>Description</u>	<u>PO Amount</u>
The AfterMarket Parts Company	227911	11/11/22	TIE ROD 1500 1990 3600 TAG AXLE LH	\$7,256.14
	227938	11/14/22	TONGUE 1500 1990 3600 ASSY TAG AXLE	\$4,261.78
	227939	11/14/22	HOSE 5260-5265 9300 ALTERNATOR FLEX 3 IN X 54 IN	\$2,609.43
	227956	11/14/22	PLATE 1800 9300 SKID WHEELCHAIR RAMP	\$285.90
	227957	11/14/22	TIE ROD 1500 1990 3600 TAG AXLE LH	\$4,128.15
	227973	11/15/22	MIRROR 1500 1990 AUTO RETURN ASSEMBLY REAR VIEW EXTERIOR RH	\$1,395.20
	227989	11/15/22	VALVE 1800 9300 BRAKE 24V TRACTION CONTROL	\$707.97
	228004	11/16/22	VALVE 9381-9398 9400 DRIVERS HEATER DEFROSTER	\$6,671.29
	228039	11/17/22	LENS 1500 1990 3600 3700 MARKER LIGHTS	\$2,902.02
	228045	11/18/22	RADIATOR 1800 9300 ASSEMBLY	\$13,101.27
	228046	11/18/22	CLUTCH 3600 3700 COIL ASSY 24V COMPRESSOR ASSEMBLY A/C	\$1,239.15
	228047	11/18/22	REPAIR KIT 1800 9300 COVER PLATE FRONT	\$10,917.91
	228075	11/21/22	ARM 1500 1990 3600 3700 TIE ROD LH REAR TAG	\$3,319.50
	228082	11/21/22	CLAMP 1500 1990 3600 3700 SUSPENSION TAG AXLE	\$1,755.66
	228083	11/21/22	SASH 1500 3600 3700 WCL SLIDING FRAME LESS	\$3,225.41
	228111	11/22/22	ARM 1500 1990 3600 3700 TIE ROD RH REAR TAG	\$2,445.26
	228112	11/22/22	MOTOR 1500 3600 3700 GEAR 24V LIFT ROLL STOP	\$8,168.38
	228126	11/22/22	HOSE 1800 5000 6000 9300 HUMP HIGH	\$855.20

<u>PO Vendor Name</u>	<u>PO Number</u>	<u>PO Date</u>	<u>Description</u>	<u>PO Amount</u>
The AfterMarket Parts Company	228141	11/23/22	TEMP 4 X 8 IN GEAR 1500 3600 3700 RICON LIFT ROLLSTOP	\$313.92
	228147	11/28/22	KNUCKLE 1500 1990 STEERING LH W/BUSHINGS ASSY	\$7,195.95
	228150	11/28/22	CLIP 1800 9300 RING CENTER HOOP BEARING	\$2,911.00
	228186	11/29/22	FAN 1800 9300 DRIVER DASH	\$5,352.34
	228188	11/29/22	FILLER ASSY 1500 3600 3700 FUEL NECK	\$7,055.76
Total for Vendor:	The AfterMarket Parts Company			\$154,883.26
The Home Depot Pro	227600	11/02/22	Handle Broom	\$183.60
	227744	11/09/22	Handle Mop Spring Yoke W/ Adjusting Wing Nut	\$516.00
	228196	11/29/22	KNEE PAD SOFT CAP	\$263.40
Total for Vendor:	The Home Depot Pro			\$963.00
The Sherwin-Williams Company	227965	11/14/22	PAPER MASKING 18IN WHITE 3M	\$414.48
Total for Vendor:	The Sherwin-Williams Company			\$414.48
The Well Church	228318	11/29/22	Aggrement The Well Church Park-n- Ride 2023.	\$14,300.00
Total for Vendor:	The Well Church			\$14,300.00

<u>PO Vendor Name</u>	<u>PO Number</u>	<u>PO Date</u>	<u>Description</u>	<u>PO Amount</u>
Thermo King of Dallas	227602	11/02/22	Hose A/C Gauge Blue 1/4X1/4 FL	\$240.00
LLC	227764	11/09/22	COIL 5260-5265 6000 SOLENOID A/C COMPRESSOR	\$2,371.50
	228063	11/18/22	FITTING 1800 5000 9300 A/C SUCTION ADAPTER R134A	\$12,723.62
	228073	11/20/22	SCREW COVER A/C THERMO KING HVAC LRV	\$538.62
	228122	11/22/22	O-RING 5260-5265 6000 UPPER VALVE PUCK	\$249.60
Total for Vendor:	Thermo King of Dallas LLC			\$16,123.34
Thermon Heating Systems USA Inc	228074	11/20/22	COMPOUND MOW THERMON NH-500 for HEATING PADS	\$3,025.00
Total for Vendor:	Thermon Heating Systems USA Inc			\$3,025.00
Trace3 LLC	228314	11/29/22	122DH030 Firewall Management and Support Services	\$177,000.00
Total for Vendor:	Trace3 LLC			\$177,000.00
Transwest ATTP	228097	11/21/22	VALVE 6000 6300 RELAY R-12 FRONT	\$1,194.16
	228136	11/22/22	ADAPTER 1500 1800 3600 9300 VACUUM BRAKE CALIPER	\$1,114.00
Total for Vendor:	Transwest ATTP			\$2,308.16
Tubelite Den LLC	228098	11/21/22	DECAL SCOTCHLITE WHITE 280I EDGE READY	\$7,170.00
Total for Vendor:	Tubelite Den LLC			\$7,170.00



RTD:PO - Purchase Order Monthly Activity Old

PO Creation Date - From Date: 11/01/2022 To Date: 11/30/2022

Run Date: 12/06/2022

Page 36 of 38

<u>PO Vendor Name</u>	<u>PO Number</u>	<u>PO Date</u>	<u>Description</u>	<u>PO Amount</u>
U.S. Train Products LLC	227626	11/03/22	KIT SANDER NOZZLE HEATER SD160 LRV	\$19,014.00
Total for Vendor:	U.S. Train Products LLC			\$19,014.00
UKM Transit Products	227929	11/13/22	COVER SPRING ADA RAMP LRV	\$2,458.00
	227969	11/14/22	STRUT LRV DEN V-VII DAMPER CUSHION ADA RAMP	\$5,450.00
Total for Vendor:	UKM Transit Products			\$7,908.00
US Standard Sign Company	227731	11/08/22	Sign Blank 18 X 24 Sign Shop	\$896.00
Total for Vendor:	US Standard Sign Company			\$896.00
United Laboratories Inc	228175	11/28/22	CHEMICAL STARBURST WIPES STAINLESS STEEL/METAL POLISH	\$1,500.96
Total for Vendor:	United Laboratories Inc			\$1,500.96
Vapor Bus International	227604	11/02/22	CARRIER 1650 CABLE PASSENGER DOOR	\$184.80
Total for Vendor:	Vapor Bus International			\$184.80
Vehicle Maintenance Program, Inc.	227645	11/04/22	FILTER AIR 1800 6000 9300 ENGINE PRIMARY	\$5,211.60
	227921	11/11/22	CLAMP 1500 1990 5260-5265 V-BAND EXHAUST	\$1,034.56
Total for Vendor:	Vehicle Maintenance Program, Inc.			\$6,246.16

<u>PO Vendor Name</u>	<u>PO Number</u>	<u>PO Date</u>	<u>Description</u>	<u>PO Amount</u>
Vision Chemical Systems Inc	227617	11/03/22	Chemical Cleaner Solvent Parts Washer Tank 55GL Dm	\$1,050.00
	227646	11/04/22	CHEMICAL CLEANER WASHROOM ACID FREE	\$996.00
	227690	11/08/22	DEODORANT LEMON FIELDS	\$4,530.00
	227952	11/14/22	CHEMICAL CLEANER LOOK GLASS CONCENTRATE BUTCHERS	\$239.20
Total for Vendor:	Vision Chemical Systems Inc			\$6,815.20
Voith US Inc	227776	11/09/22	PIN CENTERING CONICAL ELECTRICAL HEAD COUPLER LRV	\$19,311.00
Total for Vendor:	Voith US Inc			\$19,311.00
WABTEC Passenger Transit	228001	11/16/22	GASKET HPU CONNECTOR CANNON PLUG OUTBLOCK RESERVOIR SD160 DEN V LRV	\$1,431.00
Total for Vendor:	WABTEC Passenger Transit			\$1,431.00
Waxie Sanitary Supply	227990	11/15/22	MOP SPONGE 12 INCH WITH HANDLE	\$166.38
Total for Vendor:	Waxie Sanitary Supply			\$166.38
Western Paper Distributors	227666	11/06/22	TOWEL UTILITY BUS 9 X 10.5	\$2,488.32
	228099	11/21/22	TOWEL UTILITY BUS 9 X 10.5	\$7,464.96
	228123	11/22/22	Paper Toilet 2 PLY	\$1,920.00
Total for Vendor:	Western Paper Distributors			\$11,873.28
Western States Fire Protection Co	227996	11/15/22	Civic Center Pump Replacement PO Change order	\$22,330.00
Total for Vendor:	Western States Fire Protection Co			\$22,330.00

<u>PO Vendor Name</u>	<u>PO Number</u>	<u>PO Date</u>	<u>Description</u>	<u>PO Amount</u>
Western-Cullen-Hayes Inc.	227630	11/04/22	CAM MOW FOR ARM & SUPPORT BRACKET ASSY HOLD CLEAR 3590 WCH	\$187.50
Total for Vendor:	Western-Cullen-Hayes Inc.			\$187.50
Whisler Bearing Company	227603	11/02/22	Lubricant Grease Dielectric Lubriplate Ds-Es 1-3/4OZ	\$273.00
Total for Vendor:	Whisler Bearing Company			\$273.00
XCalliber	228170	11/28/22	PISTON 1500 1990 3600 3700 TRANS B500 LOCKUP	\$1,190.00
Total for Vendor:	XCalliber			\$1,190.00
ZF North America	227762	11/09/22	GASKET KIT 6000 9300 ZF TRANS 6AP1700B 6AP1400B REBUILD	\$3,363.28
	228100	11/21/22	KIT 6000 ZF TRANS 6AP1400B TORQUE CONVERTER REPAIR	\$809.52
	228124	11/22/22	PIN 6000 9300 SLOTTED ZF TRANS DISC CARRIER	\$4,284.60
Total for Vendor:	ZF North America			\$8,457.40
Zivaro Inc	227688	11/08/22	2023 NMRL NetApp Support Renewal	\$19,991.34
	227689	11/08/22	NetApp Hardware Support Renewal	\$24,657.00
	228012	11/16/22	2023 Extrahop Renewal	\$55,730.44
Total for Vendor:	Zivaro Inc			\$100,378.78
Total Amount for Report:				\$2,960,412.45
Total Number of POs:				419



PART III

**NOVEMBER 2022 PURCHASE ORDERS AND PURCHASING
CARD ACTIVITY FOR THE REPORTING MONTH COMPARED TO
PREVIOUS MONTHS**

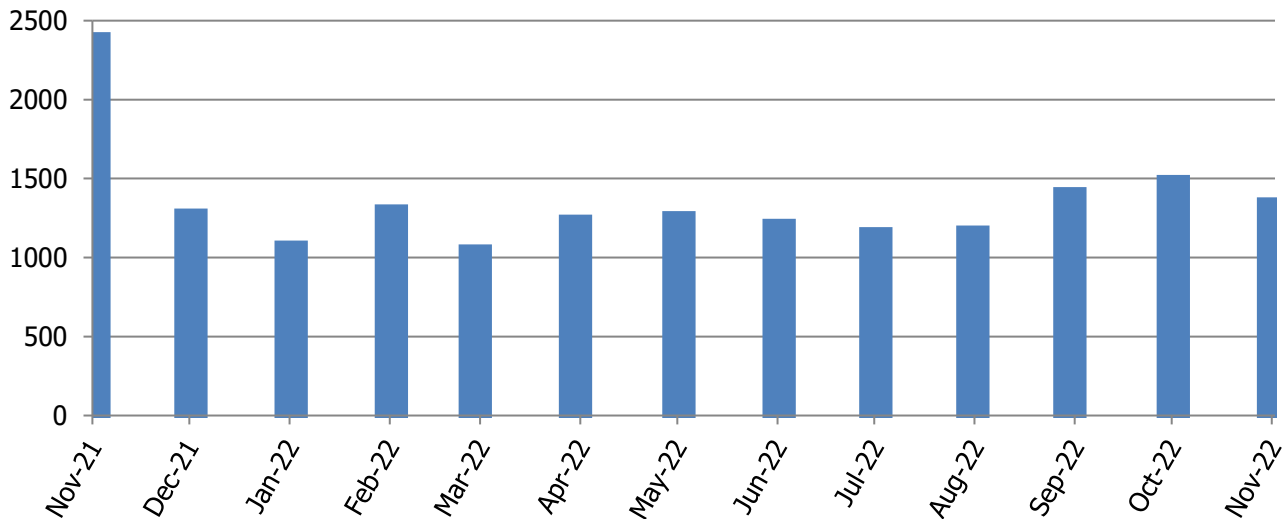


SUMMARY OF PURCHASE ORDER AND
PURCHASING CARD ACTIVITY FOR THE MONTH OF
NOVEMBER 2022

1. Purchase Order Activity		
A. Total Purchase Orders Prepared:		419
B. Total Dollars Obligated:	\$	2,960,412.45
2. Purchasing Card Activity:		
A. Total Transactions:		1279
B. Total Dollars Spent:	\$	555,236.14
C. Rebate Check	\$	35,007.39



Total Purchasing Card Transactions - November 2021 through November 2022



Total Purchasing Card Dollars - November 2021 through November 2022

