



Redistricting Public Meetings

January 24, 2022

Meeting Purpose

- Inform public of Redistricting process
- Hear your comments

Background

- RTD is governed by a 15-member, publicly elected Board of Directors
- Director elections are non-partisan
- Directors are elected to a four-year term and represent a specific district
- Elections are staggered so that eight seats are open in one general election, seven in the next
- RTD Director Districts are redrawn every 10 years following the US Census
- Goal is to achieve roughly equal populations among districts
- Redistricting map must be adopted by the Board of Directors before **March 15, 2022**
 - Otherwise, state legislative service agencies will create the map

Process

RTD Board Chair established an Ad Hoc Redistricting Committee to guide the process

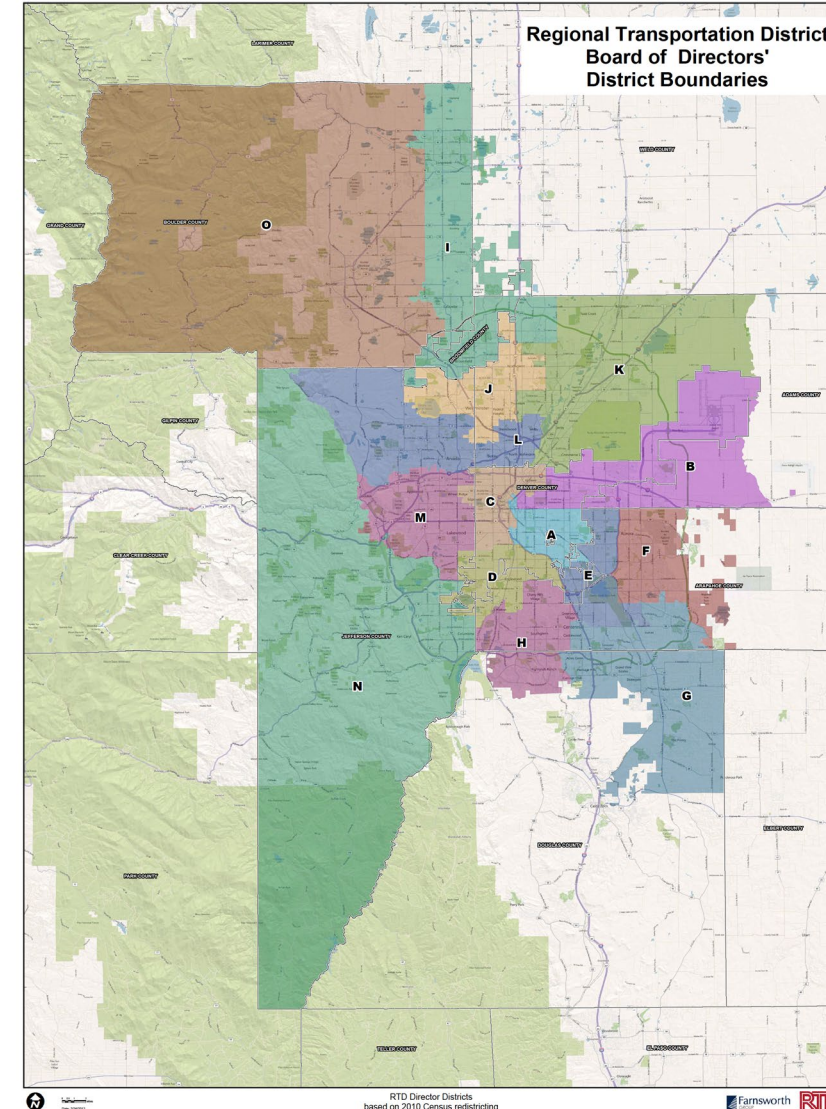
- Committee began monthly meetings in September 2021 to provide guidance to RTD staff and a consultant
- Meetings open to the public
- Alternatives to be reviewed by public at a series of public meetings and public hearings

Board Adopted Criteria

- Make a good faith effort to achieve mathematical population equality between districts
 - No more than 5% deviation between the most and least populous district
- Ensure race is not a predominant consideration
- Comply with Voting Rights act of 1965
- Preserve whole voter precincts
- Create districts as compact and contiguous as reasonably possible
- Ensure no district is left without representation
- Not draw districts for the purpose of protecting one or more incumbent Directors or declared candidates
- Preserve communities of interest and keep intact jurisdictional subdivisions such as counties, towns and cities as much as reasonably possible

Current RTD Director Map

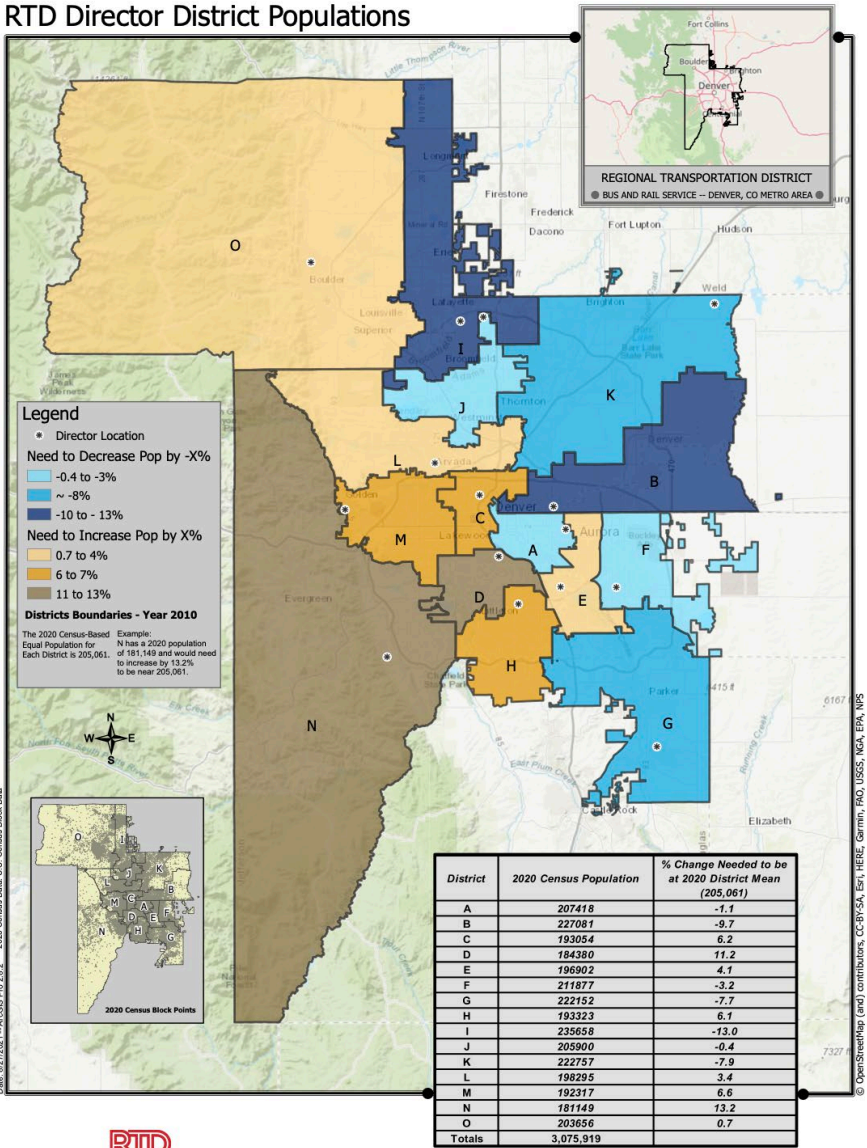
- Population based on 2010 Census
- 2010 RTD population: Approximately 2.7 million
- Mean Director District: Approximately 178,000



2020 RTD Population

- 2020 RTD population: Approximately 3.1 million
- Mean Director District: Approximately 205,000
- Districts shown in tan must gain population
- Districts shown in blue must reduce population

RTD Director District Populations



2020 Census Population

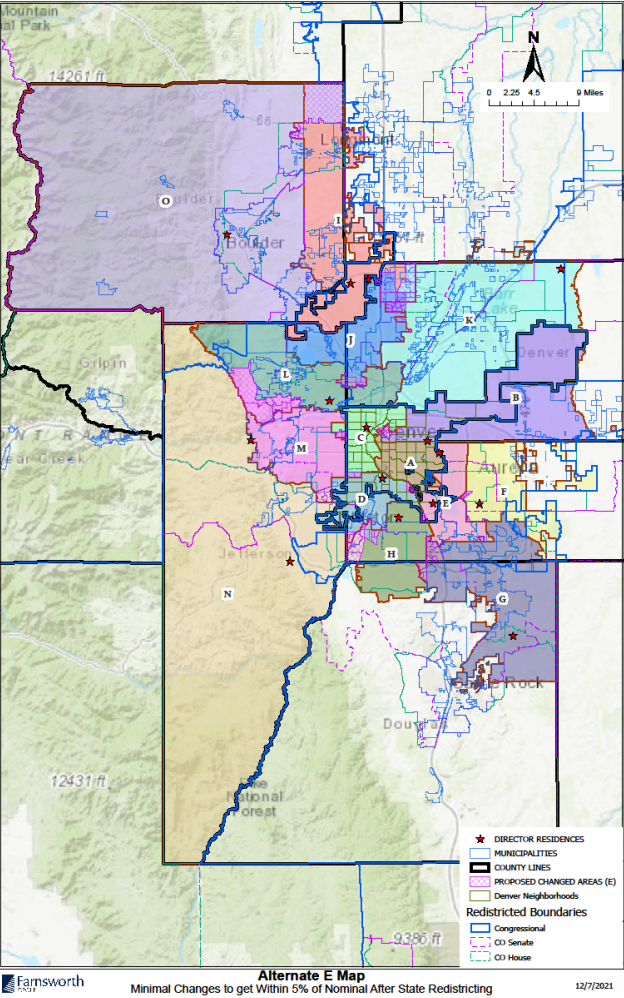
Change Needed for Equal District Populations

Alternatives

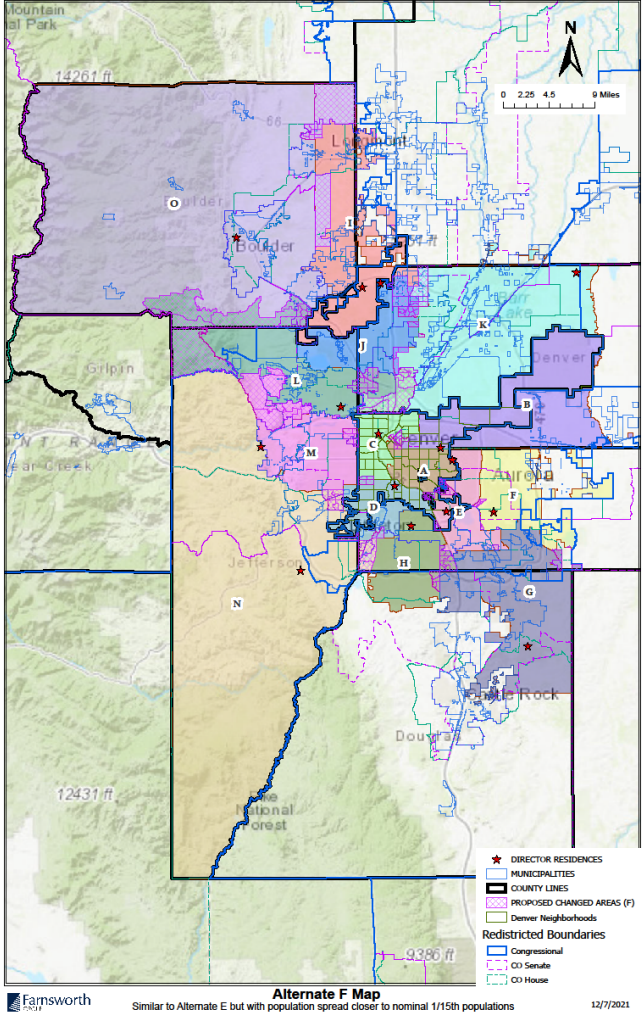
RTD Board Ad Hoc Redistricting Committee has recommended two maps move forward for public review

- Alternative E – Focuses on keeping Director district boundaries consistent with county and jurisdictional boundaries to the extent possible and keeps all Director district populations within five percent of the mean population (205,000)
- Alternative F – Focuses on bringing population of each Director district within one to two percent of the mean population (205,000)

Alternatives



Alt F: Focus on equal population



Schedule / Next Steps

Action	Date
1. Public Meetings	Jan 19-27
2. Ad Hoc Redistricting Committee Meeting <ul style="list-style-type: none">• Map for Public Hearings to be released	Jan 31
3. Public Hearings	Feb 9 - 10
4. Ad Hoc Redistricting Committee / Final Public Hearing	Feb 14
5. Ad Hoc Redistricting Committee – Proposed action to adopt map	Feb 22
6. RTD Board adopts final map	March 8

What Would You Like RTD Board to Consider?

- Comments can also be provided through RTD website
- Comments can be submitted through February 22
- More detailed maps of each Director District can be found on website

<https://www.rtd-denver.com/rtd-redistricting-process>