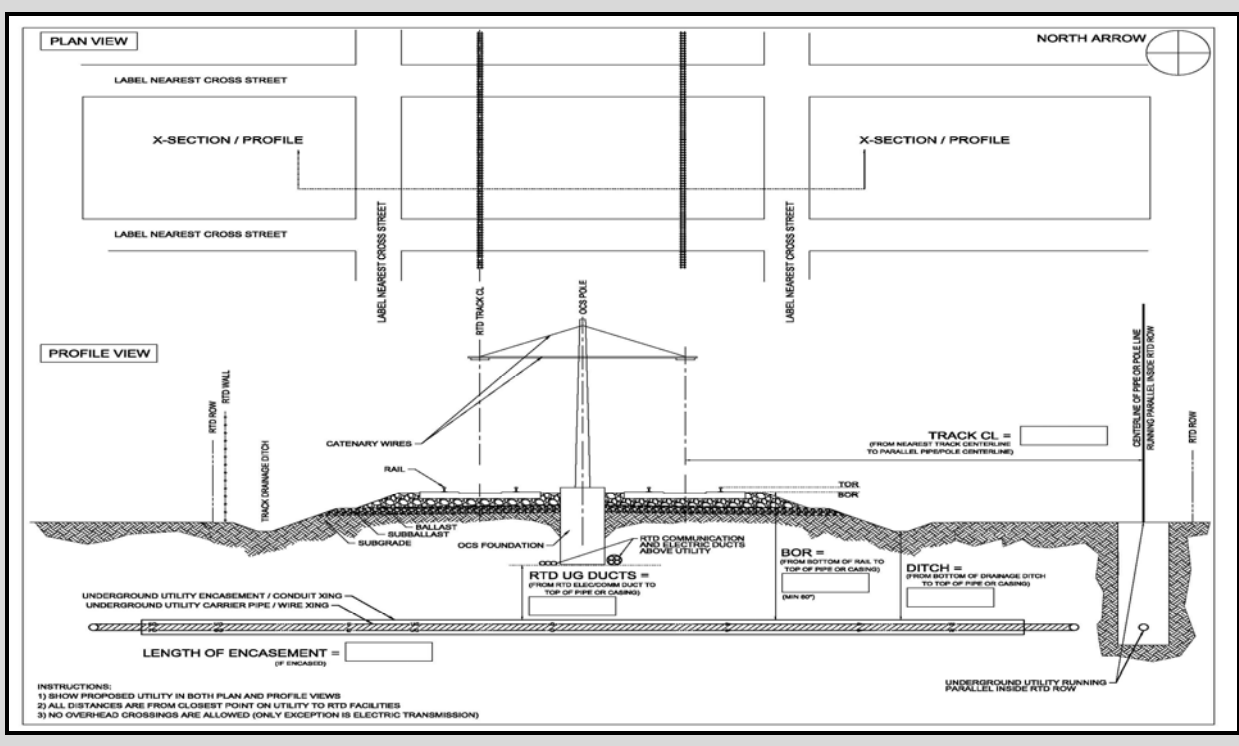


<b>Date Executed / Revised:</b>	<b>RTD Railroad Utility Agreement - Application Data Sheet CRT</b> (Complete ALL Sections of this form)			<b>RTD Agreement Number:</b>
<b>RTD Rail Route:</b>	<b>Nearest Cross-Streets:</b>	<b>City:</b>	<b>County:</b>	<b>ROW (RTD, City, CDOT?):</b>
<b>Pre-Existing RR Agreement with which RR:</b>	<b>Pre-Existing Agreement RR Lead &amp; Mile Post(s):</b>		<b>Pre-Existing Agreement Type &amp; Number:</b>	

<b>Utility Owner Current (Original):</b>	<b>OH or UG:</b>	<b>Utility Type:</b>
<b>Project Location Detailed Description:</b>	<b>Xing or Parallel or Encroachment:</b>	
<b>Description of Utility Install Methods:</b>		

<b># of Wires, Conduits, Pipes</b>	
<b>Carrier Pipe <u>Size</u> -and- Carrier Pipe <u>Thickness</u>:</b>	
<b>Carrier Pipe Material:</b>	
<b>Encasement Length or Distance between Poles:</b>	
<b>Encasement <u>Size</u> - and- Encasement <u>Thickness</u>:</b>	
<b>Encasement Material:</b>	
<b>Depth Below Base of Rail or Height Above Top of Rail:</b>	
<b>Other Important Details (Asbestos, kV, psi, etc):</b>	
<b>Variance to RTD Criteria (Explain):</b>	
<b>Date to be Installed:</b>	



**REQUIREMENTS to OFFICIALLY SUBMIT your REQUEST to CROSS RTD CRT TRACKS/ROW to RTD:**

- 1) Email Official Requests with the following **Subject Line:**  
**OFFICIAL REQUEST to CROSS RTD TRACKS/ROW with**  
**{Utility Owner Name} {Size} {Communications, Electric, Gas, Sanitary, or Water} {OH or UG} @ {Location} & {Nearest RTD Rail Corridor}**  
 To: [RealProperty@rtd-denver.com](mailto:RealProperty@rtd-denver.com) & [Marcia.Fralev@rtd-denver.com](mailto:Marcia.Fralev@rtd-denver.com) // cc: [Nikita.Zanichkowsky@rtd-denver.com](mailto:Nikita.Zanichkowsky@rtd-denver.com)
- 2) Email Must Include:
  - a - Official Letter requesting permission to cross on official Utility Owner Letterhead (or in body of email with Utility Owner Logo).
  - b - Owner/Developer // Contractor // Who maintains after installation. // Brief Description of Work. // Location of Work (City, Street) // Anticipated Dates of Work.
  - c - Plan/Profile 'For Construction' Plan Set with required RTDC-DTO Notes to Contractor.
  - d - Completed RTD RR Utility Agreement - Application Data Sheet.
- 3) Contact RTD for the current & updated required [RTD Notes to Contractor](#) and [RTD RR Utility - Application Data Sheet](#).
- 4) Contact RTD's Nikita Zanichkowsky, Utilities (303.299.2420) with Utility Engineering Design Review, Submittal Questions, and updated Notes/Forms.  
 (Over-the-Shoulder Design review with RTD Utility Engineering group is encouraged prior to official review is submitted to RTD Real Property.)
- 5) An Executed RTD Utility License Agreement from RTD's Real Property is required before RTDC-DTO will Issue a Permit for your work.
- 6) Contact RTD's Utility Team (303-299-2811) & RTDC-DTO Rail Ops (720-460-5803) a full two (2) weeks prior to construction.

For RTD Utility Agreement Application Forms and RTD Contact Information, go to [www.rtd-denver.com](http://www.rtd-denver.com)  
 and enter 'UTILITY' in the searchbar - select 'RTD|Utility Agreements Process'