



October 21, 2024

**We Make Lives Better
Through Connections.**

JANUARY 2025

Proposed Service Changes

Brandon Figliolino

Manager, Community Engagement

Dan Merritt

Senior Service Planner and Scheduler

Overview



**What are
Service Changes?**



**Proposed
Changes**



**Feedback
and Input**



**Timeline
and Next Steps**



What are Service Changes?

Service Changes

- **RTD reviews, proposes, and implements changes to its service schedules three times a year**
 - Typically take effect in January, May/June, and September
- **Service changes support multiple objectives**
 - Increase reliability
 - Improve on-time performance
 - Enable represented employees to select work shifts
 - Account for changes in ridership
 - Advance the implementation of RTD's System Optimization Plan
 - Support scheduled maintenance projects



Categories of Service Changes



Route Adjustment

Detours or changes to routes or stops to optimize efficiency, improve accessibility, respond to changing travel patterns, or facilitate maintenance projects.



Service Increase

Increases to the frequency, trips, span of service, or operating hours.



Service Reduction

Reductions to the frequency, trips, span of service, or operating hours.



Seasonal Adjustment

Temporary modifications made to bus and rail services in response to seasonal variations in demand or operational conditions.



Schedule Timing

Alterations to the running time of bus and rail services, typically to better align with customer demands and trip connections, and to improve on-time performance.



January 2025 Proposed Changes

Proposed Service Increases

- Enhance reliability and reduce wait times to better meet the needs of customers
- Reinstate 15-minute service frequency

E Line

Denver Union Station to RidgeGate Station

H Line

18th•California Station to Florida Station



Service Increase

Increases to the frequency, trips, span of service, or operating hours.

Proposed Service Increases (cont'd)

- These adjustments align with ridership levels and support the implementation of the SOP

Route	Name
1E/44	Art District Connector
24	University Blvd
35	Hampden Ave
49	Denver/Commerce City
73	Quebec Street
83D	Cherry Creek/Parker Road Limited

Route	Name
100	Kipling Street
139	Quincy Ave
AB1	Downtown Boulder Station / DEN
AB2	Downtown Boulder Station / DEN
FF5	Boulder / Anschutz
LD	Longmont / Denver



Service Increase

Increases to the frequency, trips, span of service, or operating hours.



Proposed Adjustments to Schedule Timing

- These adjustments better align with customer demands, improve on-time performance and support the implementation of the SOP.

Route	Name
1	West 1 st Ave
1E/44	Art District Connector
15	East Colfax Ave
24	University Blvd

Route	Name
35	Hampden Ave
42	Montbello via Albrook/GVR
44	44 th Ave
45	Montbello via 51 st /GVR



Schedule Timing

Alterations to the running time of bus and rail services, typically to better align with customer demands and trip connections, and to improve on-time performance.



Proposed Adjustments to Schedule Timing

- These adjustments better align with customer demands, improve on-time performance and support the implementation of the SOP.

Route	Name
52	West 52 nd Ave / South Bannock
65	Monaco Parkway
73	Quebec Street
76	Wadsworth Blvd
83D	Cherry Creek/Parker Rd Limited

Route	Name
100	Kipling Street
139	Quincy Ave
LD	Longmont / Denver



Schedule Timing

Alterations to the running time of bus and rail services, typically to better align with customer demands and trip connections, and to improve on-time performance.



Proposed Adjustments to Schedule Timing

- These adjustments improve on-time performance.

D Line

18th•California Station to Mineral Station

E Line

Denver Union Station to RidgeGate Station

H Line

18th•California Station to Florida Station



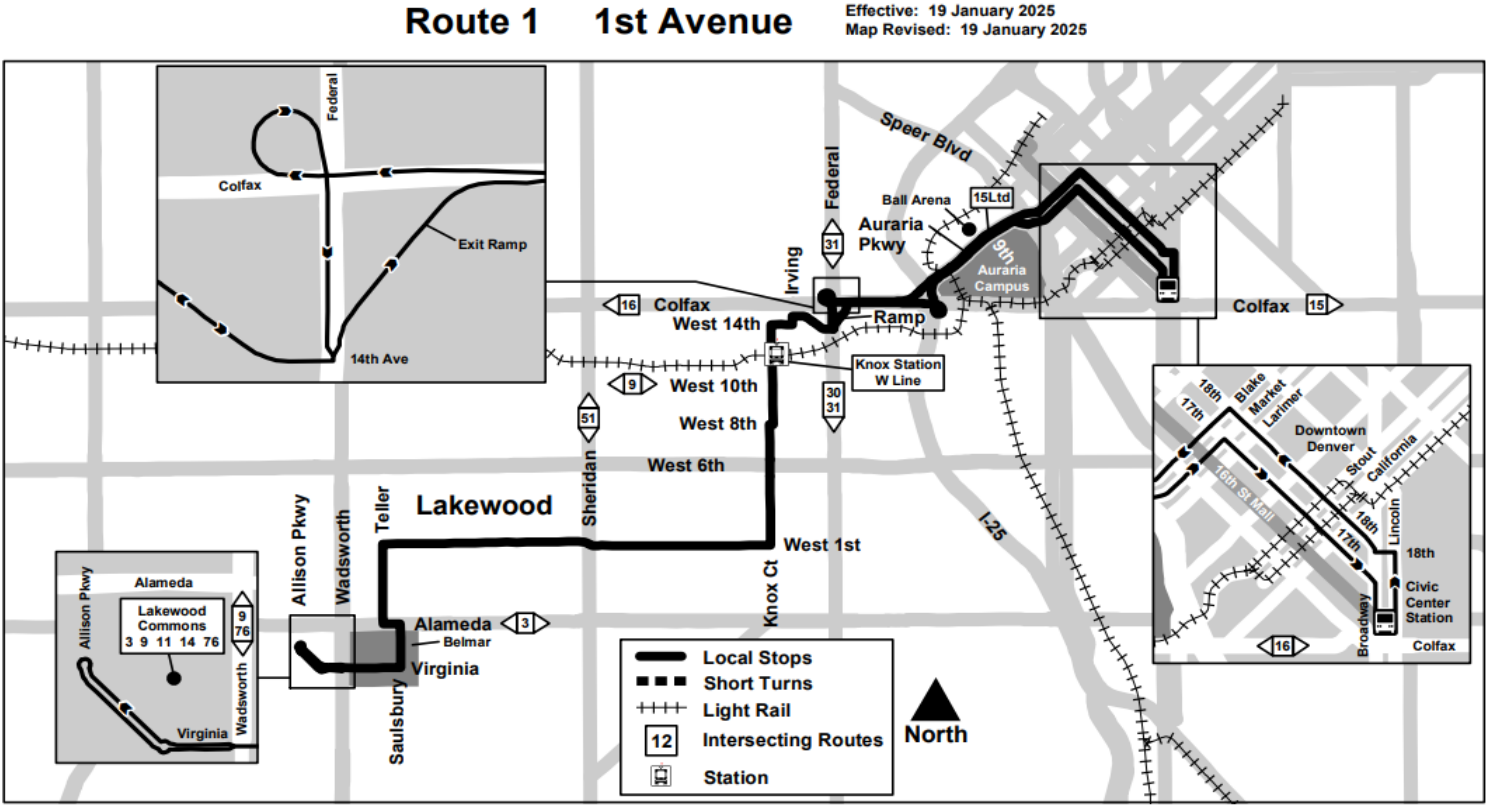
Schedule Timing

Alterations to the running time of bus and rail services, typically to better align with customer demands and trip connections, and to improve on-time performance.

Proposed Route Adjustments

Route	Name
1	West 1 st Ave

- Shortens the route to terminate at Civic Center Station



Route Adjustment

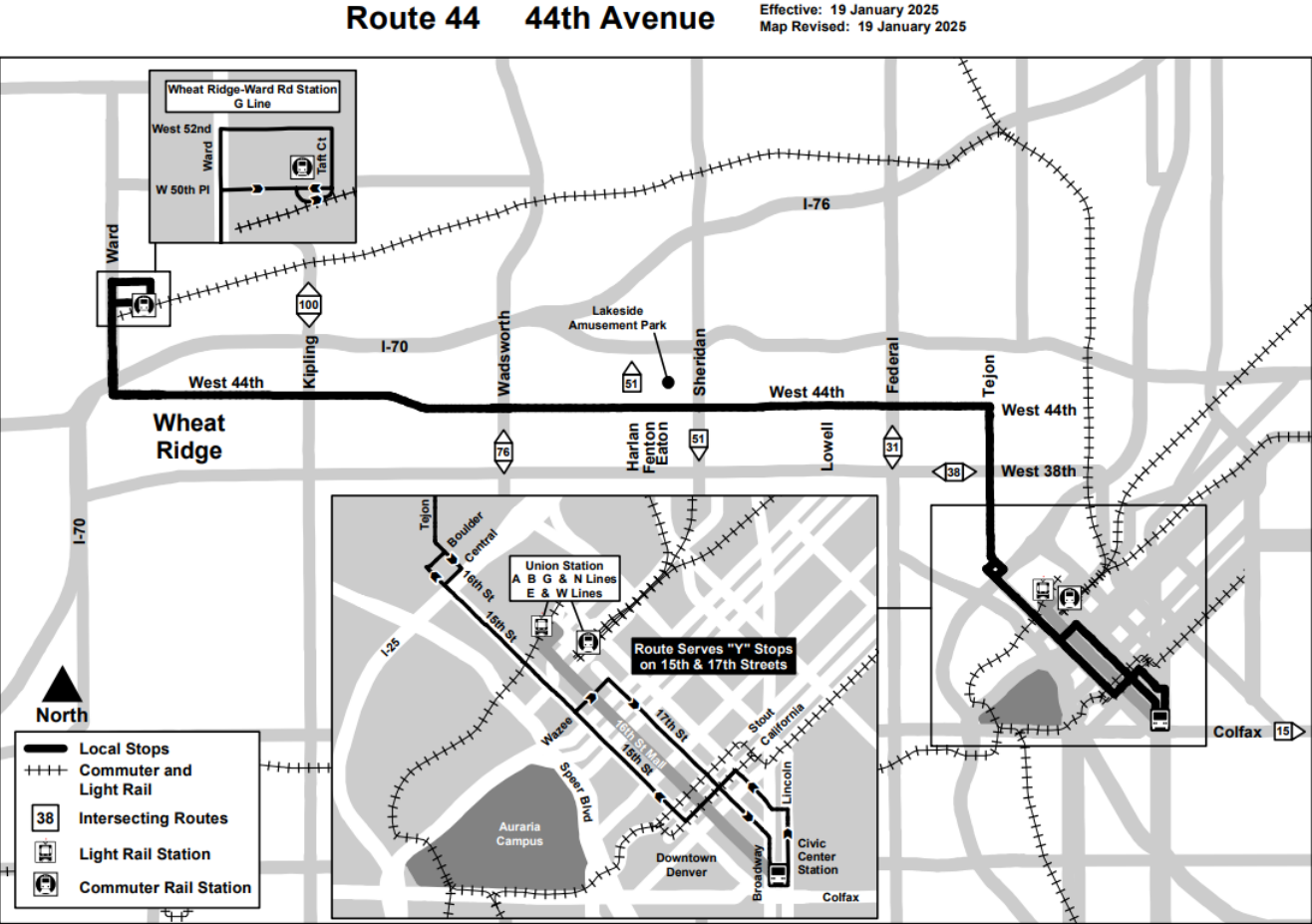
Detours or changes to routes or stops to optimize efficiency, improve accessibility, respond to changing travel patterns, or facilitate maintenance projects.



Proposed Route Adjustments (cont'd)

Route	Name
44	44 th Ave

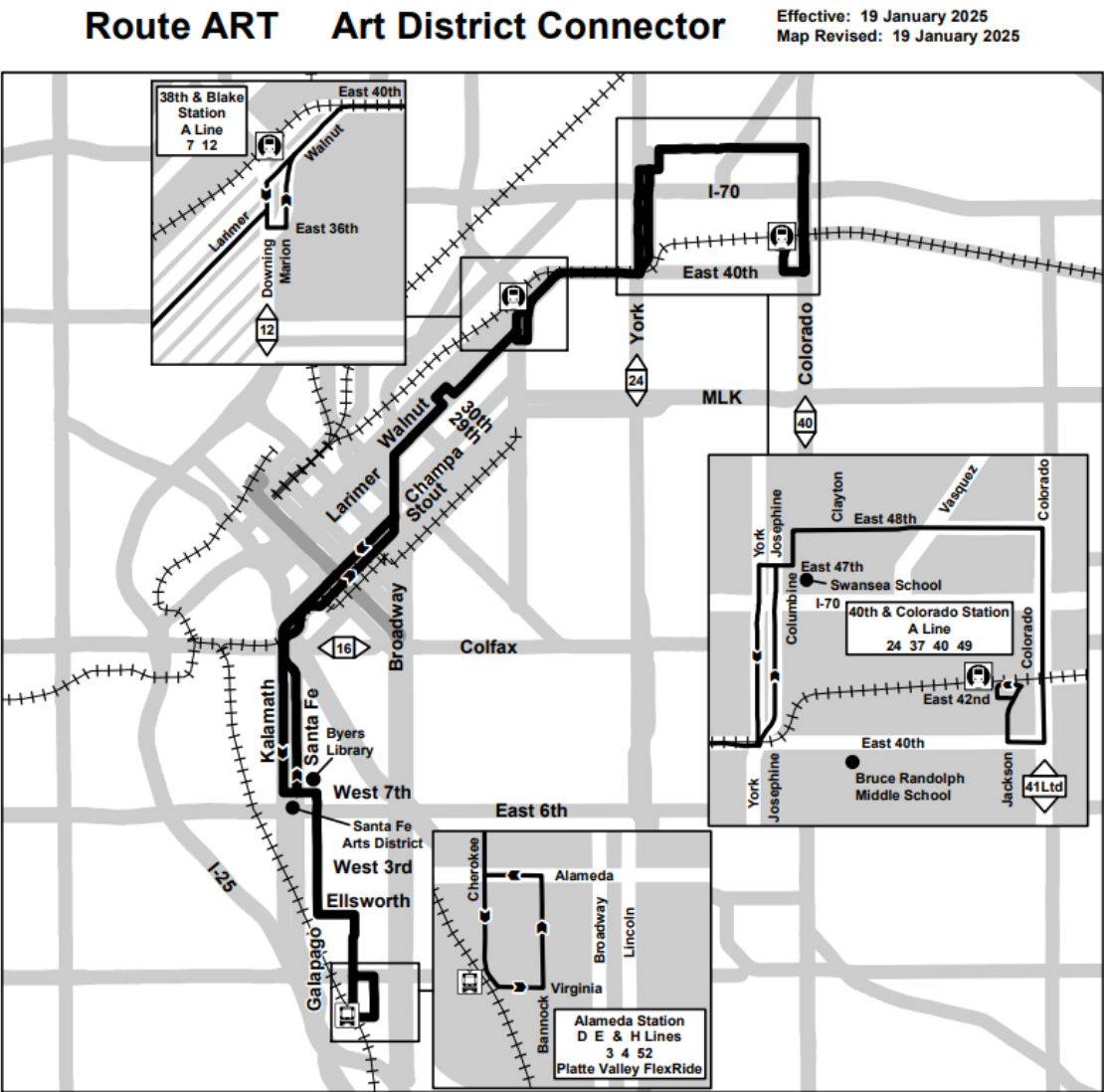
- Shortens the route to terminate at Civic Center Station



Proposed Route Adjustments (cont'd)

Route	Name
1E/44	Art District Connector

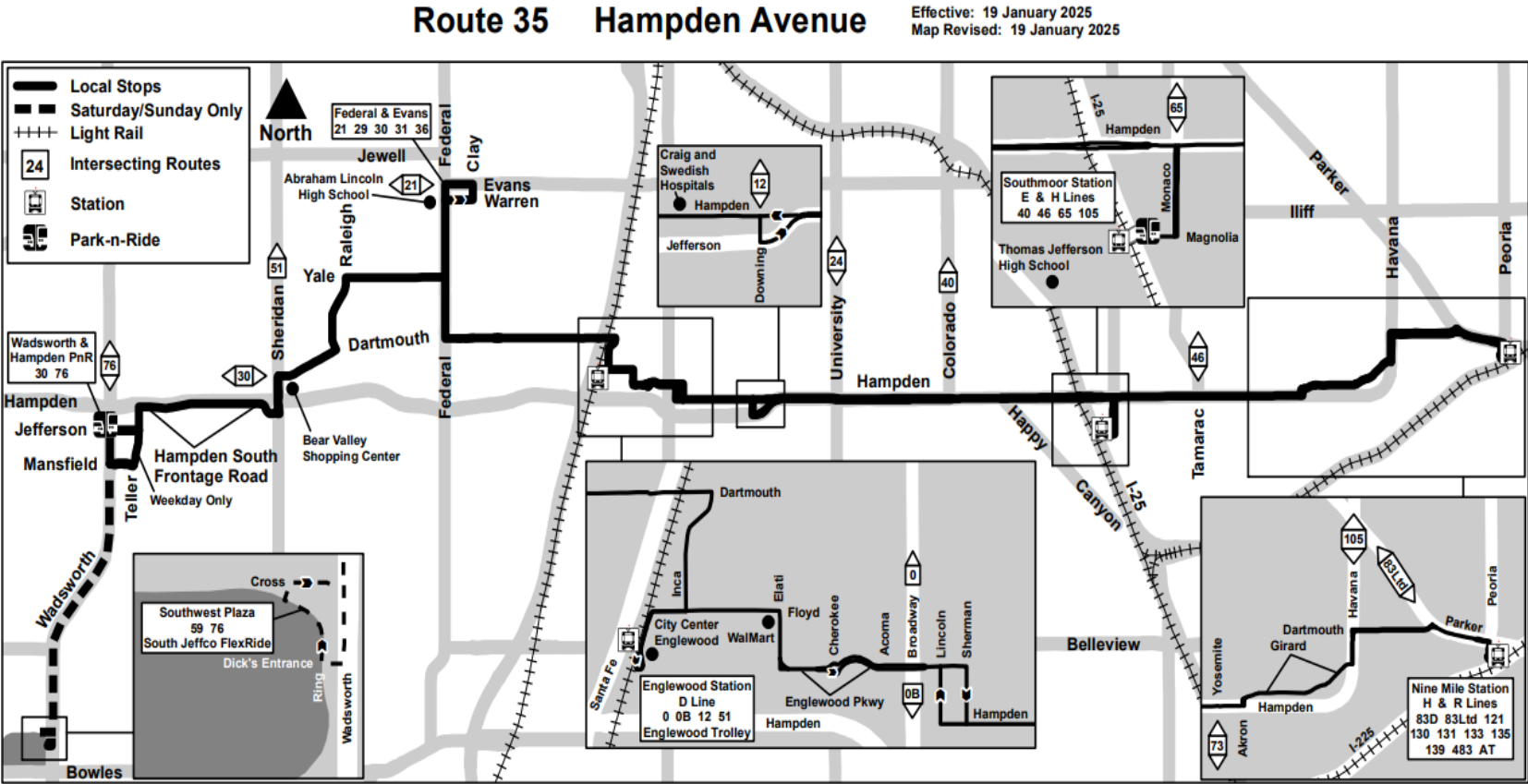
- Combines the discontinued pieces of Routes 1 and 44 into a new route that connects Baker and Five Points neighborhoods.



Proposed Route Adjustments (cont'd)

Route	Name
35	Hampden Ave

- Reinstates the Englewood Station to Nine Mile Station segment.



Proposed Route Adjustments (cont'd)

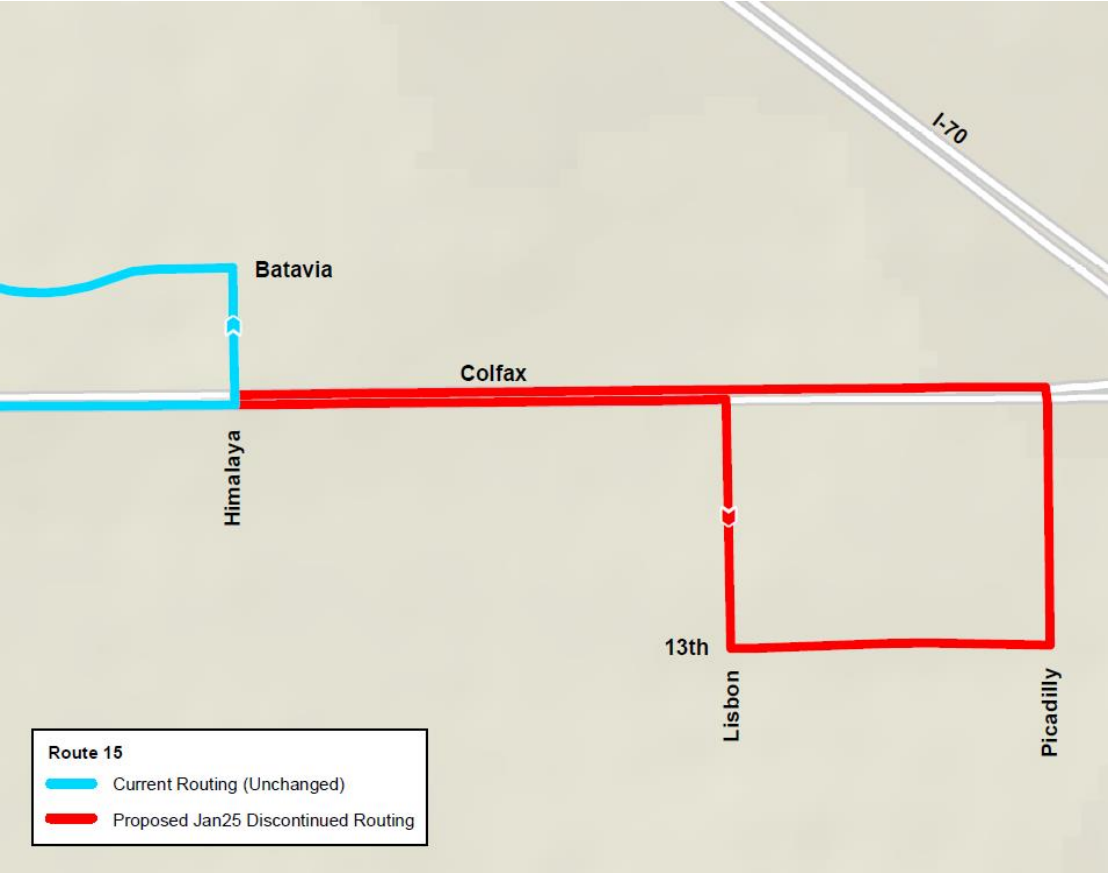
Route	Name
15	East Colfax

- Updates routing to reflect ongoing detour



Route Adjustment

Detours or changes to routes or stops to optimize efficiency, improve accessibility, respond to changing travel patterns, or facilitate maintenance projects.



Proposed Route Adjustments (cont'd)

Route	Name
45	Montbello via 51 st /GVR

- Updates routing to reflect ongoing detour. Westbound buses will operate in a loop via Maxwell, taking a right on Dunkirk, right turn on 56th Ave, and right turn on Ireland. Buses will serve the same stops in both directions.



Route Adjustment

Detours or changes to routes or stops to optimize efficiency, improve accessibility, respond to changing travel patterns, or facilitate maintenance projects.



Proposed Route Adjustments (cont'd)

Route	Name
ILFX	Interlocken-Westmoor FlexRide

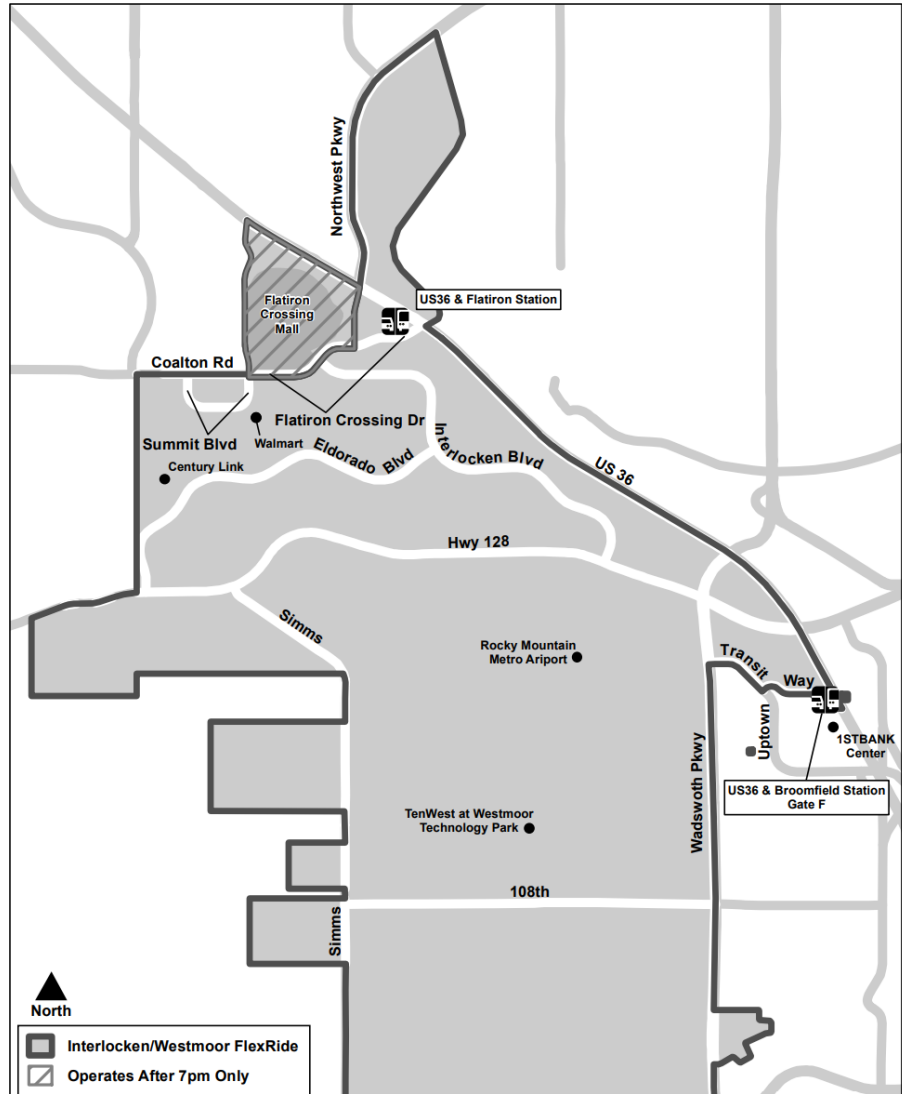
- Expansion of boundaries will include a new affordable housing development, which will improve transportation options for lower income residents and enhance ridership



Route Adjustment

Detours or changes to routes or stops to optimize efficiency, improve accessibility, respond to changing travel patterns, or facilitate maintenance projects.

October 21, 2024



Proposed Route Adjustments (cont'd)

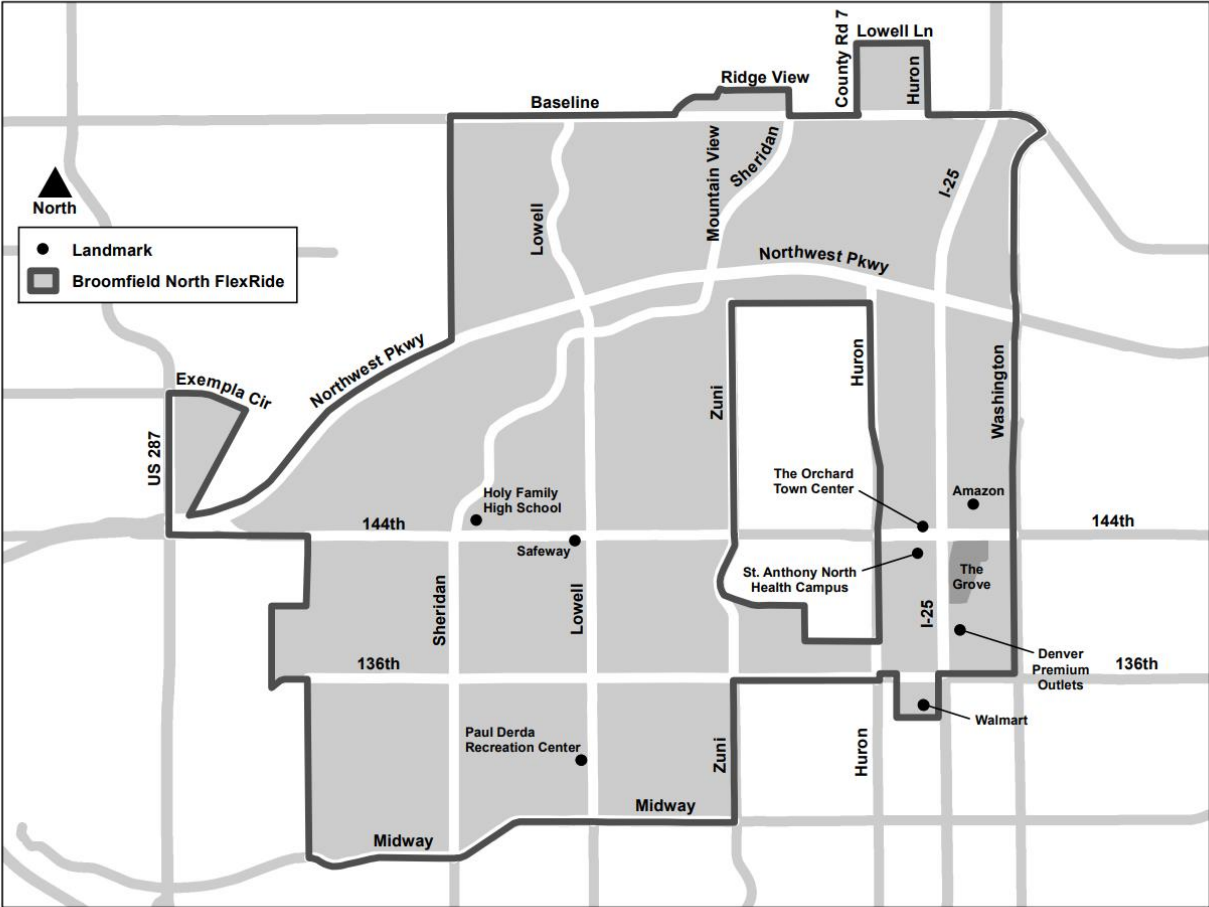
Route	Name
NBFX	North Broomfield FlexRide

- Expansion of boundaries will provide enhanced FlexRide connections for residents in North Broomfield and add multiple key travel destinations that were previously inaccessible via the North Broomfield FlexRide service.



Route Adjustment

Detours or changes to routes or stops to optimize efficiency, improve accessibility, respond to changing travel patterns, or facilitate maintenance projects.





Feedback and Input

Provide Feedback



Online Survey

Complete the online survey
at **rtd-denver.com/service-
alerts/service-changes**



Customer Care

Share feedback with a
call center agent at **303.299.6000**



Public Comment

Attend a virtual or in-person meeting
of the Board of Directors



Community Events

Visit with RTD staff at a
local community event



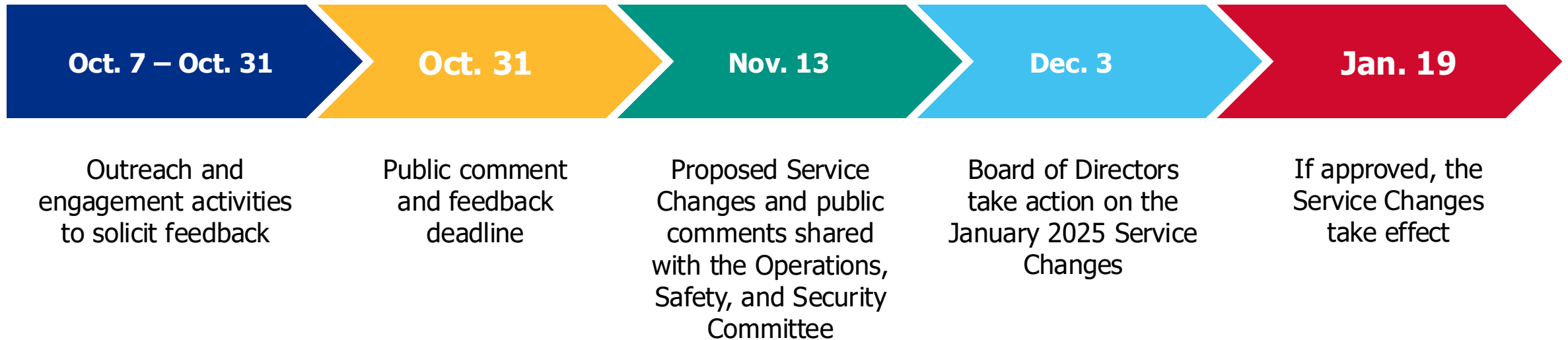
Email

Send an email to
service.change@rtd-denver.com



Timeline and Next Steps

Timeline



We Make Lives Better Through Connections.

