

# Downtown Rail Reconstruction Project

## Week in Review

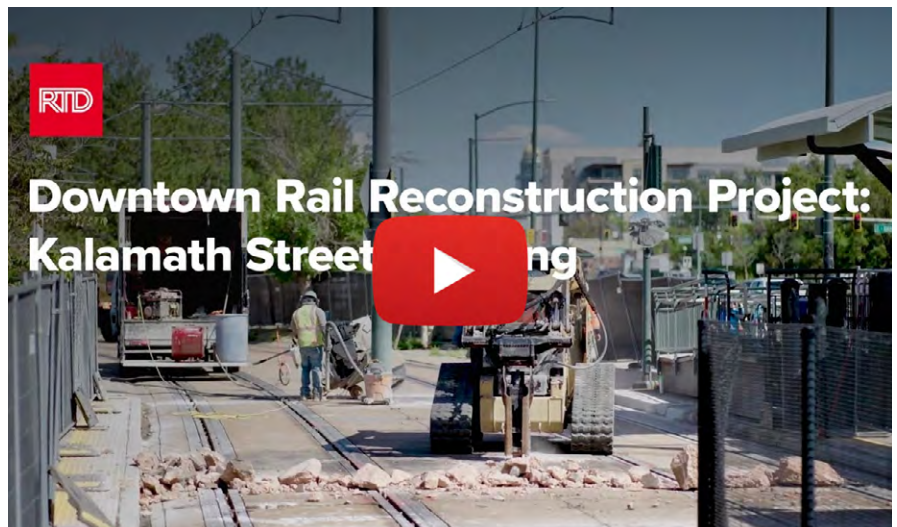


Friday, September 19, 2025

### Overview:

Demolition activities began this week, starting in Colfax at Auraria Station. Crews completed sawcutting, started removal of concrete and flangeway filler, and began cutting rail. RTD Maintenance of Way conducted an inspection of the existing embedded track prior to removal.

RTD Transit Police supported crews by assisting pedestrians in navigating the posted pedestrian detour routes around the active construction zone.



[Watch Video](#)



**Safety Moment:** Whether you are walking, riding a bike, driving, or using another mode of transportation, only cross tracks at designated crossings. Trains cannot stop quickly. A freight train traveling 55 mph needs more than a mile to come to a halt. Some RTD trains travel as fast as 79 mph. Trains can come from either direction at any time on any track.



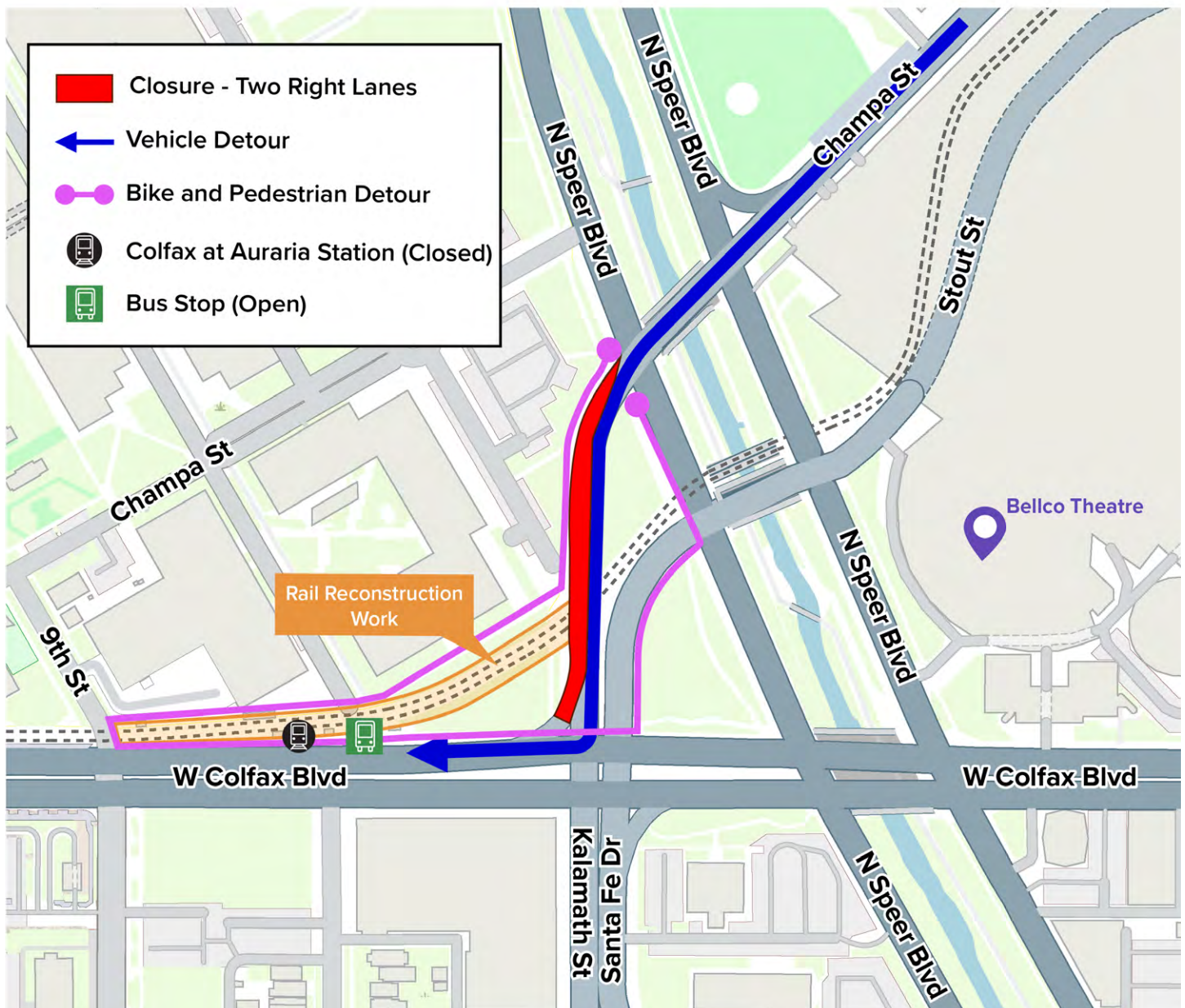


## Project Lookahead

Over the weekend and into next week, demolition will continue at Kalamath Street. Rail, ties, and ballast will be removed and new track materials will be delivered to the site. Subgrade preparation will begin next week, including materials testing. All detours for pedestrians, bicycles, and vehicles will remain the same.

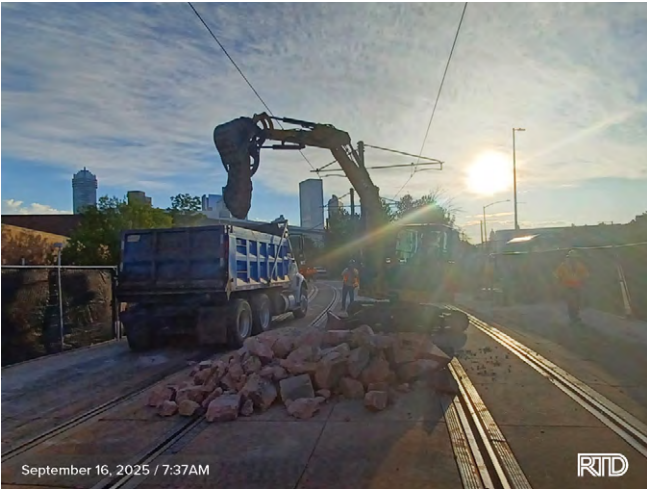


## Kalamath Street Crossing Construction Detours





## Week in Review



### 1 | Demolition of Track Paving

Kalamath Street Crossing | Sept. 16, 7:37 AM



### 2 | Removal of Flangeway Filler

Kalamath Street Crossing | Sept. 17, 11:15 AM

**Demolition activities** started Monday morning on the west end of the work area, near Colfax at Auraria Station. Crews demolished and removed concrete **track paving** before starting removal of rail materials like **flangeway filler**, the black rubber that lines the rails in sections of paved track. Once flangeway filler and concrete were removed, the rail was cut into smaller, more manageable sections to be removed as well. So far this week, crews have completed removal of **1,330 square yards** of concrete.

## Amplifying Results

A group of representatives from RTD's **Construction Engineering, Safety, and Facilities Maintenance** departments evaluated the Colfax at Auraria Station on Wednesday morning. The team identified station components that will be repaired or replaced during the Kalamath Street Crossing work, as well as improvements that will be incorporated into the future phases of the **Downtown Rail Reconstruction Project**.





## Safety Observations



### Transit Police Aiding with Detour

Kalamath Street Crossing | Sept. 18, 8:39 AM



## Quality Observations



### Rail Condition Inspection

Kalamath Street Crossing | Sept. 18, 8:46 AM

Pedestrian, bike, and vehicle **detours** went into effect Monday morning, closing the right two lanes of Kalamath Street and the two pedestrian crossings. RTD inspectors observed a significant number of pedestrians walking around the construction closure into Kalamath Street rather than following the posted detour routes. To address this issue, crews posted additional **advance warning signs**, made adjustments to the **construction fence layout**, and received on-site support from **RTD Transit Police** to help guide pedestrians to the appropriate routes.

On Thursday, RTD Maintenance of Way (MOW) crews performed a **condition inspection** of the existing **rail** near Colfax at Auraria Station. Crews demolished concrete in this area first, waiting to remove track materials until after this inspection could be performed. By exposing the **rail, ties, clips, and ballast** that is typically covered by the concrete track paving, MOW crews are able to inspect the condition of track infrastructure that cannot normally be seen.

## Did You Know...

RTD's light rail tracks at the Kalamath Street Crossing, and throughout much of the downtown area, are what's called "**paved track**." On the surface you can see the rails, but hidden underneath the concrete are the railroad ties, clips, and ballast. This type of track provides a smooth, **flat surface** for vehicles and pedestrians to cross when trains are not present.







# Kalamath Street Crossing 86-Day Schedule

## Full-Depth Rail Reconstruction



~~Week 1~~

~~Week 2~~

Week 3

Week 4

Week 5

Week 6

Week 7

Week 8

Week 9

Week 10

Week 11

Week 12

Week 13

**Project Completion  
Nov. 27**



**7%**

**Total Progress**

**0%**



**Track Replacement\***  
0/1300 Track Feet

**0%**



**Special Trackwork**  
0/1100 Track Feet

**0%**



**Vehicle Crossing**  
0/1 Upgraded

**0%**



**Pedestrian Crossing**  
0/2 Upgraded



### Amplifying Results

- ☐ Concrete Repairs
- ☐ Tactile Warning Strips
- ☐ Pavement Markings
- ☐ Curb and Gutter Repair
- ☐ Station Improvements

*\*Percentage of track replacement includes special trackwork and crossings*