

Downtown Rail Reconstruction Project

Week in Review



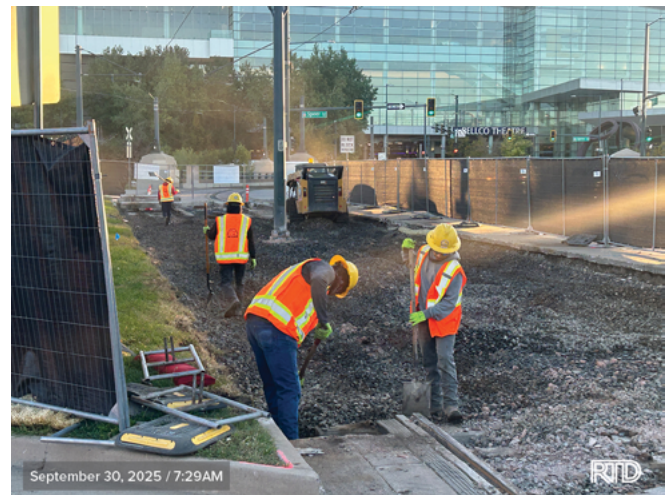
86-Day Schedule
56 Days to Go



Friday, October 3, 2025

Overview:

This week, crews completed **demolition activities** on both sides of Kalamath, performed more **subgrade testing**, and completed installation of **geotextile fabric**. Crews began placing new **ballast** and **concrete ties** and prepared materials on site for welding rail. RTD inspectors performed **safety certification inspections** of the geotextile and ballast.



Safety Moment: Whether at home or on a construction site, proper use of extension cords is an easy way to keep yourself and others safe. To prevent accidents or injuries when using extension cords, don't place cords in walkways where they can be tripped over. Do not use indoor-rated extension cords for outdoor applications. Always inspect cords before use, and never use an extension cord that is missing a ground prong.



Project Lookahead

Over the weekend, crews will continue to place **ballast** and **ties**. Rail-welding preparations will continue over the weekend as well. Traffic will shift back to a **double, right-lane closure** by Sunday morning (Oct. 5). Next week, crews will continue work on tie and ballast installation until they begin **welding rail** and assembling track.



Week in Review



1 | New Ballast

Kalamath Street Crossing | Oct. 2, 8:37 AM



2 | Placing Concrete Ties

Kalamath Street Crossing | Oct. 1, 2:52 PM

Demolition activities were completed on both sides of Kalamath Street this week. Crews extended the double, left-lane closure through the end of the week to complete more work on the east side of Kalamath. **Reconstruction** of the tracks is now underway. On Wednesday, crews completed installation of **geotextile fabric** and began placing new **ballast** on both sides of Kalamath. Crews also started placing new **concrete ties** for Track B. Geotextile, ballast, and ties are all components of the **track replacement**.

Amplifying Results

RTD Facilities Maintenance will be removing several **dead trees** from the north side of the **Colfax at Auraria Station** platform this weekend. Crews will remove the dead plants and pour back concrete to eliminate potential tripping hazards associated with the old tree grates. This improvement will also simplify **snow removal operations** and **general maintenance** on the platform.





Safety Observations



Geotextile Fabric Installation

Kalamath Street Crossing | Sept. 30, 11:02 AM



Quality Observations



Removing Soft Subgrade

Kalamath Street Crossing | Oct. 1, 7:29 AM

RTD inspectors conducted **safety certification inspection** of the **geotextile fabric** that crews placed this week. Inspectors verified that the fabric was installed across the correct areas and complied with the **technical specifications**. As part of the safety certification process, RTD inspectors regularly verify and document compliance with applicable criteria during construction.

Crews completed more **nuclear density testing** and **quality assurance testing** of the **subgrade**, this time on the east side of Kalamath Street. During quality assurance testing, inspectors identified an area of soft subgrade. Crews performed additional excavation to remove the unsuitable material and backfilled the area.

Did You Know...

There are electrical and communications **ductbanks** under RTD's light rail tracks. During rail reconstruction projects, RTD's **Mapping and Engineering Data Team** has a rare opportunity to collect **survey data** on the precise location and elevation of these ductbanks. Collecting this data helps validate and improve the Agency's **infrastructure records** and ensures that future utility work across RTD tracks can be performed safely.





Kalamath Street Crossing 86-Day Schedule

Full-Depth Rail Reconstruction



~~Week 1~~

~~Week 2~~

~~Week 3~~

~~Week 4~~

Week 5

Week 6

Week 7

Week 8

Week 9

Week 10

Week 11

Week 12

Week 13

Project Completion
Nov. 27



27%

Total Progress

9%



Track Replacement*
0/1300 Track Feet

8%



Special Trackwork
0/1100 Track Feet

0%



Vehicle Crossing
0/1 Upgraded

0%



Pedestrian Crossing
0/2 Upgraded



Amplifying Results

- ☐ Concrete Repairs
- ☐ Tactile Warning Strips
- ☐ Pavement Markings
- ☐ Curb and Gutter Repair
- ☐ Station Improvements

**Percentage of track replacement includes special trackwork and crossings*