

Downtown Rail Reconstruction Project

Kalamath Street Crossing



Completed on
Schedule

Special Service Started Friday, Nov. 28



10%

20%

30%

40%

50%

60%

70%

80%

90%

100%

Wednesday, December 3, 2025

Work on the Kalamath Street Crossing phase of the Downtown Rail Reconstruction Project has been successfully completed, on schedule. The 86-day project at Kalamath Street will ensure the long-term integrity of the tracks and maintain RTD’s oldest light rail assets in a state of good repair. This critical infrastructure restoration was completed on time thanks to the support of RTD’s local agency partners, community stakeholders, and valued customers.

By investing in the longevity of the transit system, RTD continues to deliver on the commitment to providing safe, reliable and efficient public transportation for the Denver metropolitan area.



[Watch Video](#)



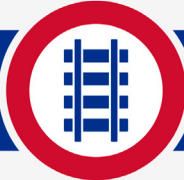


Kalamath Street Crossing 86-Day Schedule

Full-Depth Rail Reconstruction



1,300 Feet of
Track Replaced



100%
Completed



81 Thermite
Welds



100%
Completed



1,100 Linear
Feet of Special
Trackwork



100%
Completed



Recycled
Demolition
Materials



2,830
Tons



1 At-Grade
Vehicle
Crossing



100%
Completed



2 Pedestrian
Crossings



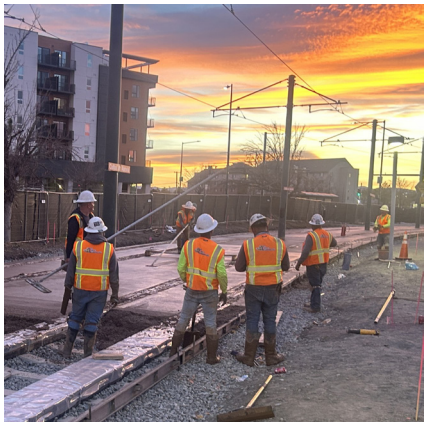
100%
Completed



Printed Customer
Information
Materials



534
Banners, Signs,
and Decals

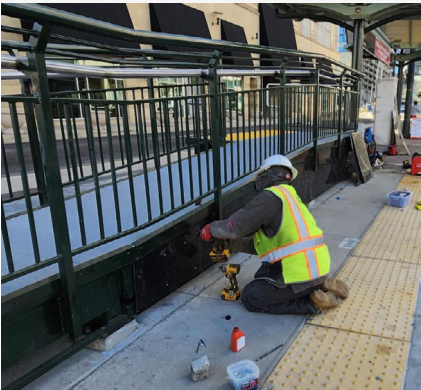


Amplifying Results

Over the 86-day work window, RTD completed system upgrades in the Downtown Loop in addition to the full-depth rail reconstruction at the Kalamath Street Crossing.

3

Projects Upgrading Accessibility



20th•Welton Station
High Block Replacement

Replaced two high blocks with new materials for improved accessibility



Colfax at Auraria Station
Concrete Repairs

Removed old tree grates to improve safety and accessibility

6

Projects Advancing State of Good Repair



California Street
Rail Repair

Repaired jointed broken rail with continuously welded rail



Colfax at Auraria Station
Variable Message Signs

Installed new digital signs to enhance customer experience

3

Projects Enhancing Customer Experience



L Line Corridor
Switch Repairs

Repaired rails at switch 21A and 11A supporting reliable service delivery



Colfax at Auraria Station
Station Improvements

Refreshed station platform markings for train door locations

Customer and Community Connections

6

Media Interactions



50+

Direct Stakeholder Interactions



107k

Social Media Impressions



[Sign up for project updates and view previous reports online](#)

